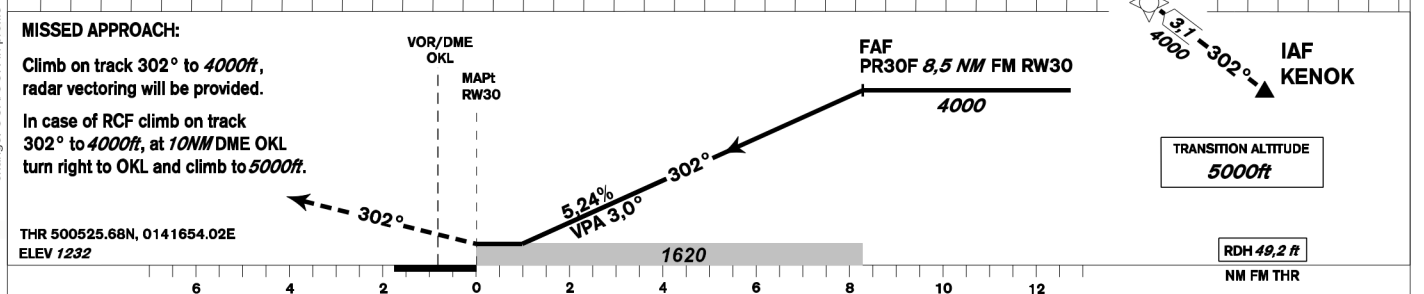
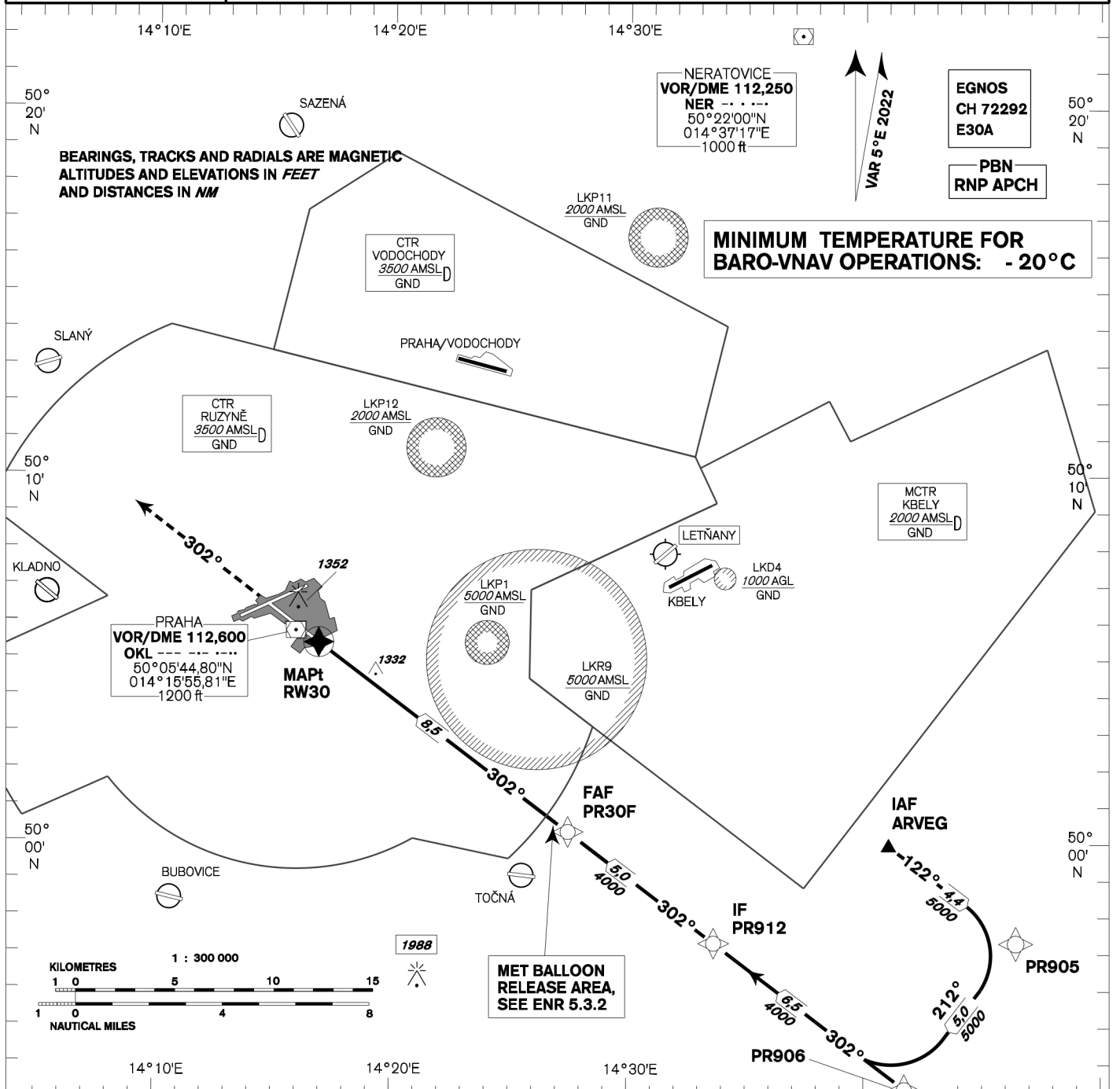


INSTRUMENT APPROACH CHART - ICAO	AERODROME ELEV 1234 THR RWY 30 ELEV 1232 OCH RELATED TO THR RWY 30	PRAHA RADAR 127,580 RUZYŇŔE RADAR 119,010 SUPPLEMENTARY FREQ. 136,080 121,500 134,560 RUZYŇŔE TOWER 118,110 SUPPLEMENTARY FREQ. 121,500	<div style="display: flex; justify-content: center; align-items: center;"> <div style="text-align: center;"> MSA VOR/DME OKL </div> <div style="margin-left: 20px;"> PRAHA/RuzyňŔe RNP RWY 30 </div> </div>
---	---	--	--



OCA/OCH		A	B	C	D						
LNAV	ft		1620 / 380								
LNAV / VNAV	ft		1529 / 297								
LPV	ft		1432 / 200								
Circling		see the circling approach chart									

DIST THR (MAPt) NM		9	8	7	6	5	4	3	2	1
ALTITUDES ft		4150	3830	3510	3190	2870	2550	2240	1920	1600

FAF - MAPt 8,5 NM		kt	80	100	120	140	160	180
		min:sec	6:25	5:07	4:16	3:40	3:12	2:51
Rate of descent		ft/min	420	530	640	740	850	960

Timing is not authorized for defining the MAPt.

Posloupnost traťových bodů / Way point sequence

Od / From IAF ARVEG		
ARVEG	IAF	fly-by
PR905		fly-by
PR906		fly-by
PR912	IF	fly-by
PR30F	FAF	fly-by
RW30	MAPt	fly-over

Od / From IAF KENOK		
KENOK	IAF	fly-by
PR906		fly-by
PR912	IF	fly-by
PR30F	FAF	fly-by
RW30	MAPt	fly-over

Seznam traťových bodů / Way point list	
PR905	49 57 17,86 N 014 46 25,19 E
KENOK	49 51 26,01 N 014 45 34,00 E
PR906	49 53 19,27 N 014 41 43,75 E
PR912	49 57 14,58 N 014 33 44,54 E
PR30F	50 00 18,07 N 014 27 29,23 E
RW30	50 05 25,68 N 014 16 54,02 E
ARVEG	49 59 56,37 N 014 41 02,25 E

SBAS FAS Data Block

Vstupní data / Input Data

Parametry / Parameters	Hodnoty / Values
Operation Type	0
SBAS Provider	1 (EGNOS)
Airport Identifier	LKPR
Runway	30
Runway Letter	0 (None)
Approach Performance Designator	0
Route Indicator	
Reference Path Data Selector	0
Reference Path Identifier	E30A
LTP/FTP Latitude	500525.6800N
LTP/FTP Longitude	0141654.0200E
LTP/FTP Ellipsoidal Height (metres)	421.2
FPAP Latitude	500628.8400N
Delta FPAP Latitude (seconds)	63.1600
FPAP Longitude	0141443.3200E
Delta FPAP Longitude (seconds)	-130.7000
Threshold Crossing Height	49.2
TCH Units Selector	0 (feet)
Glidepath Angle (degrees)	3.00
Course Width (metres)	105.00
Length Offset (metres)	0
HAL (metres)	40.0
VAL (metres)	35.0

Výstupní data / Output Data

Parametry / Parameters	Hodnoty / Values
Data Block	10 12 10 0B 0C 1E 00 00 01 30 33 05 60 1A 7F 15 08 08 21 06 74 24 70 ED 01 E8 02 FC EC 01 2C 01 64 00 C8 AF 5A B9 20 0F
Calculated CRC Value	5AB9200F

Required Additional Data (not CRC wrapped)

Parametry / Parameters	Hodnoty / Values
ICAO Code	LK
LTP/FTP Orthometric Height (metres)	375.5