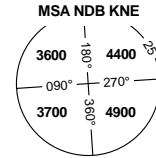


**STANDARD DEPARTURE
CHART INSTRUMENT
(SID) - ICAO**

BRNO APPROACH / RADAR	127.350
KUNOVICE TOWER	120.555
EMERGENCY FREQ	121.500

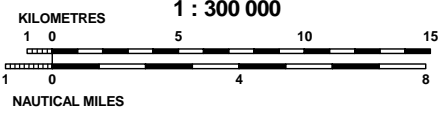
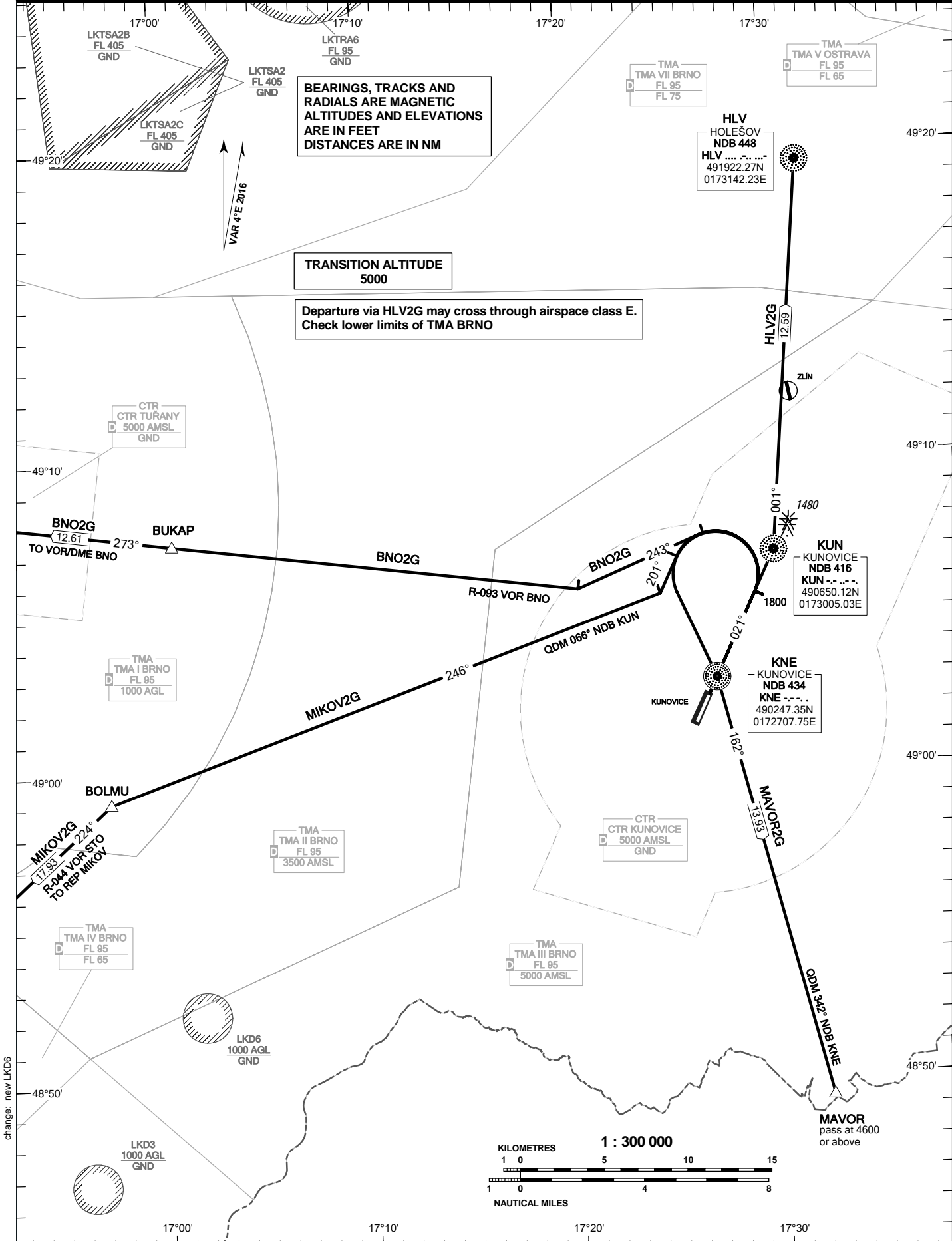


**KUNOVICE
RWY 02C**

BEARINGS, TRACKS AND RADIALS ARE MAGNETIC
ALTITUDES AND ELEVATIONS
ARE IN FEET
DISTANCES ARE IN NM

TRANSITION ALTITUDE
5000

Departure via HLV2G may cross through airspace class E.
Check lower limits of TMA BRNO



change: new LKD6