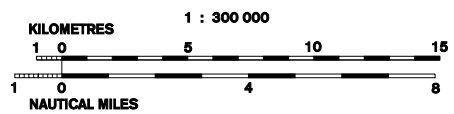
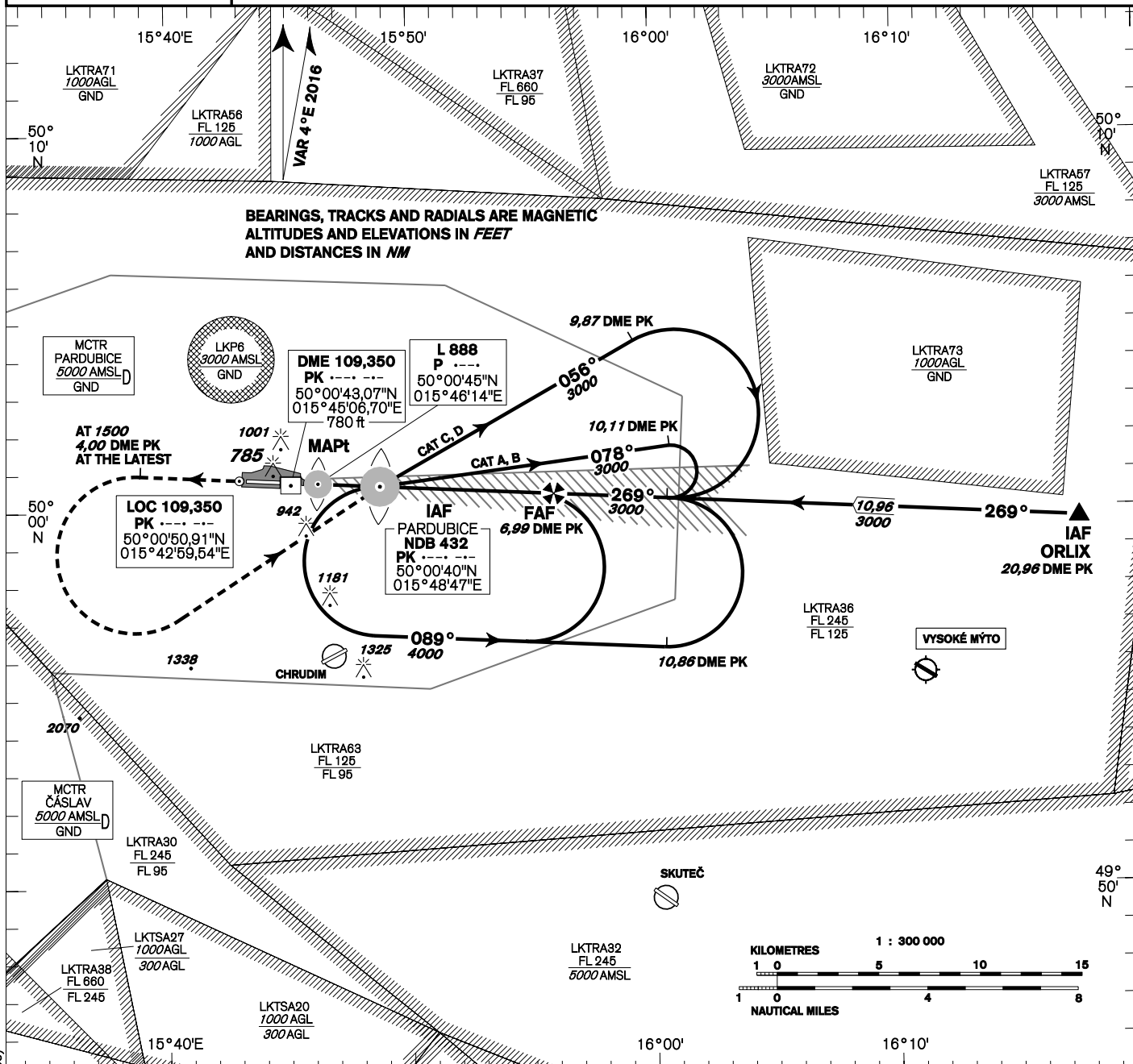
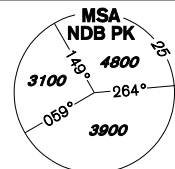


INSTRUMENT APPROACH CHART - ICAO	AERODROME ELEV 741 - 27 hPa THR RWY 27 ELEV 731 - 27 hPa OCH RELATED TO THR RWY 27	PARDUBICE MTWR 120,155 MTWR (reserve) 120,205 MAPP 127,655 267,300 O/R	PARDUBICE ILS/DME RWY 27
---	---	---	---



MISSED APPROACH:
Climb to 1500, not later 4,00 DME PK, turn left to NDB PK, climbing to 3500

THR 500046.50N, 0154521.56E
ELEV 731 - 27 hPa

MAX IAS = 186 kt
bank angle 15°

ILS RDH 49,2 ft
TRANSITION ALTITUDE 5000ft

1493 PASS NOT BELOW

change: obstacle Čepi withdrawn (ELEV 965)

OCA/OCH		A	B	C	D
Straight-in Approach	ft	885 / 153	895 / 163	905 / 173	915 / 183
LOC only	ft	1050 / 318			
Circling South of AD Only	ft	1230 L/-	1266 L/-	1647 L/-	1733 L/-

DME PK NM	7	6	5	4	3	2	1
ALTITUDES ft	3010	2680	2350	2020	1700	1370	1050
kt	80	100	120	140	160	180	
FAF - MAPt 6,27 NM min:sec	4:42	3:46	3:08	2:41	2:21	2:05	
Rate of descent ft/min	430	540	650	760	870	970	

Timing is not authorized for defining the MAPt.