

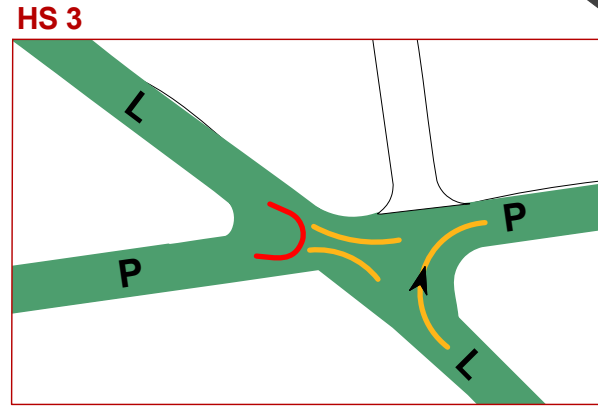
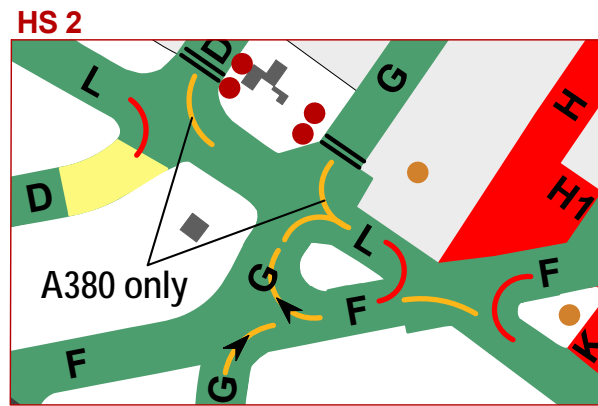
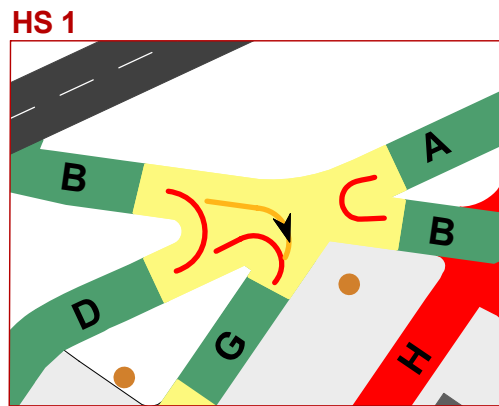
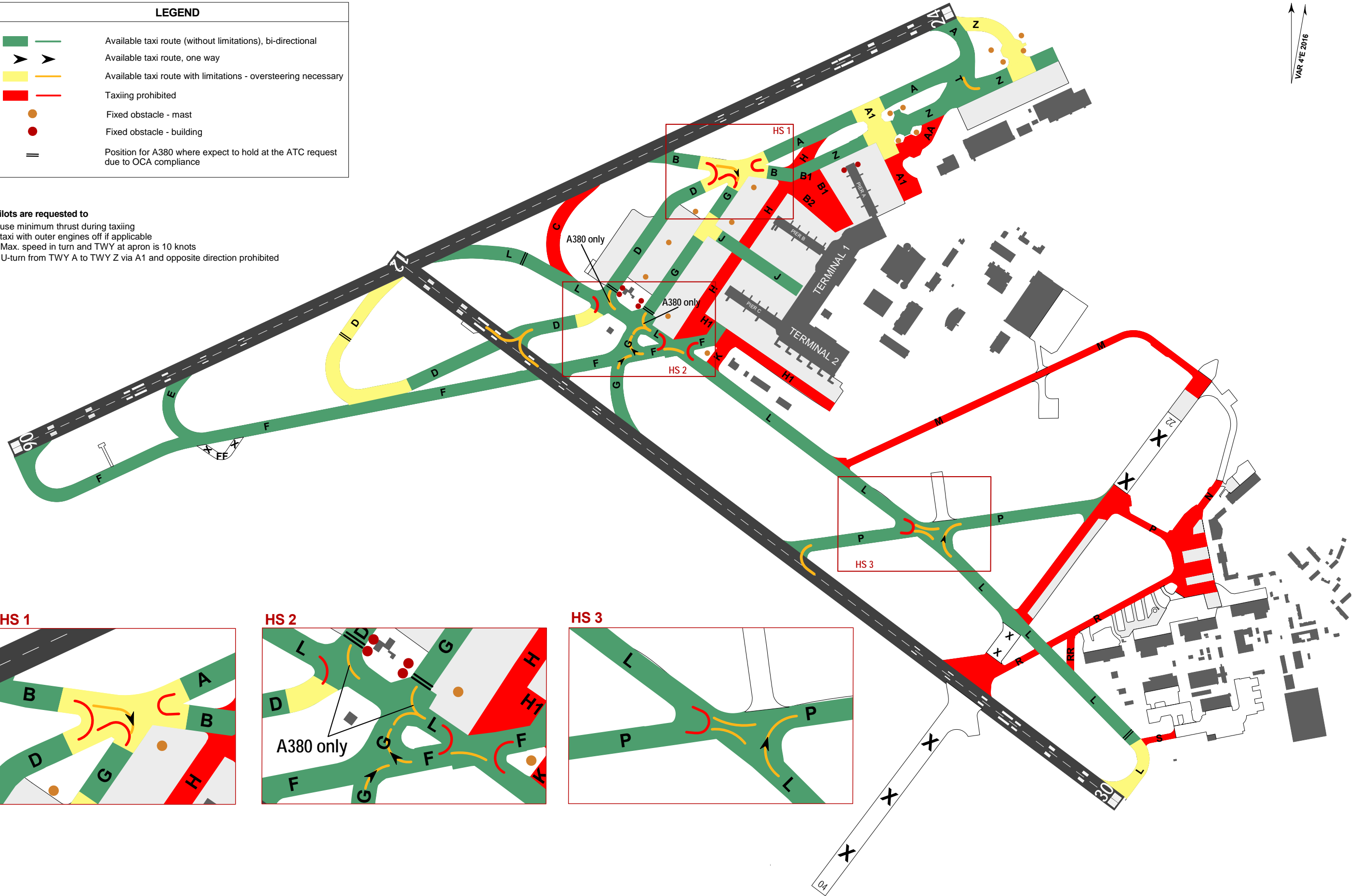
# TAXI ROUTES FOR A340-600, A380, AN124, B747-8, B777-300/300ER, C5

## PRAHA/Ruzyně

LEGEND	
	Available taxi route (without limitations), bi-directional
	Available taxi route, one way
	Available taxi route with limitations - oversteering necessary
	Taxiing prohibited
	Fixed obstacle - mast
	Fixed obstacle - building
	Position for A380 where expect to hold at the ATC request due to OCA compliance

### Pilots are requested to

- use minimum thrust during taxiing
- taxi with outer engines off if applicable
- Max. speed in turn and TWY at apron is 10 knots
- U-turn from TWY A to TWY Z via A1 and opposite direction prohibited



changes: taxiing from TWY F to RWY 12; from RWY 12 to TWY F; from TWY F to RWY 30; TWY G between TWY F and RWY 30; holdspot 3 withdrawn, renumbering of holdspot 4 to holdspot 3