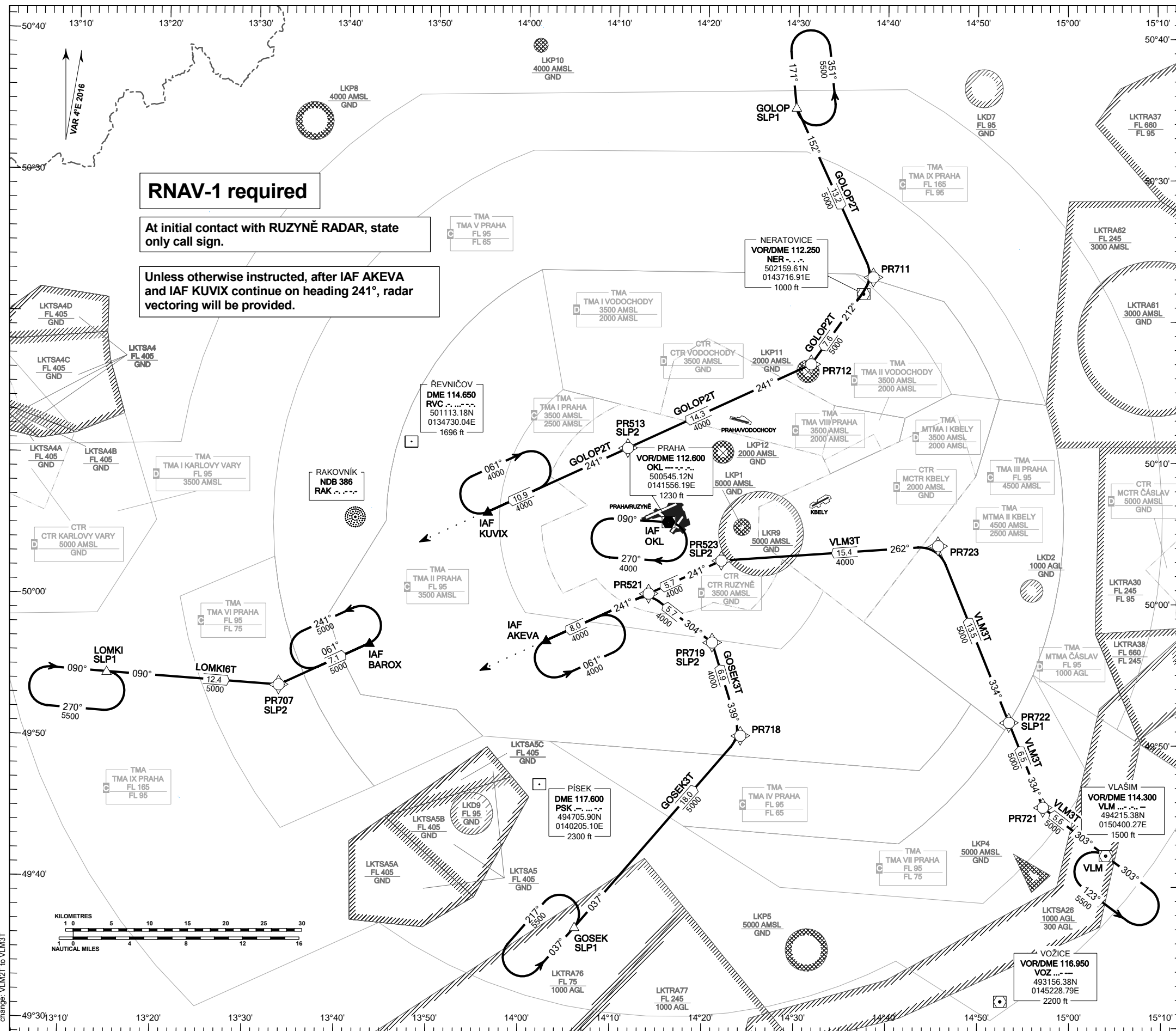


**RNAV STANDARD ARRIVAL CHART - INSTRUMENT
(STAR) - ICAO**

**PRAHA/RUZYŇĚ
RNAV STAR RWY 06**

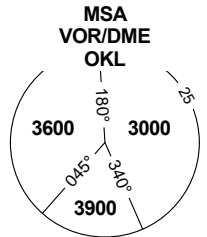


RNAV-1 required

At initial contact with RUZYŇĚ RADAR, state only call sign.

Unless otherwise instructed, after IAF AKEVA and IAF KUVIX continue on heading 241°, radar vectoring will be provided.

PRAHA RADAR	120.530
RUZYŇĚ RADAR	127.580
SUPPLEMENTARY FREQ APP	118.310
RUZYŇĚ DELIVERY	119.010
RUZYŇĚ TOWER	120.060
SUPPLEMENTARY FREQ TWR	118.110
RUZYŇĚ GROUND	134.560
RUZYŇĚ ATIS	121.910
EMERGENCY FREQ	122.160
	121.500



TRANSITION ALTITUDE
5000

SPEED LIMITING POINT	
SLP1	MAX IAS 250 KT
SLP2	MAX IAS 220 KT

BEARINGS, TRACKS AND RADIALS ARE MAGNETIC
ALTITUDES AND ELEVATIONS ARE IN FEET
DISTANCES ARE IN NM

REF AIP AD 2-LKPR-25, 2.22.3.2.1.