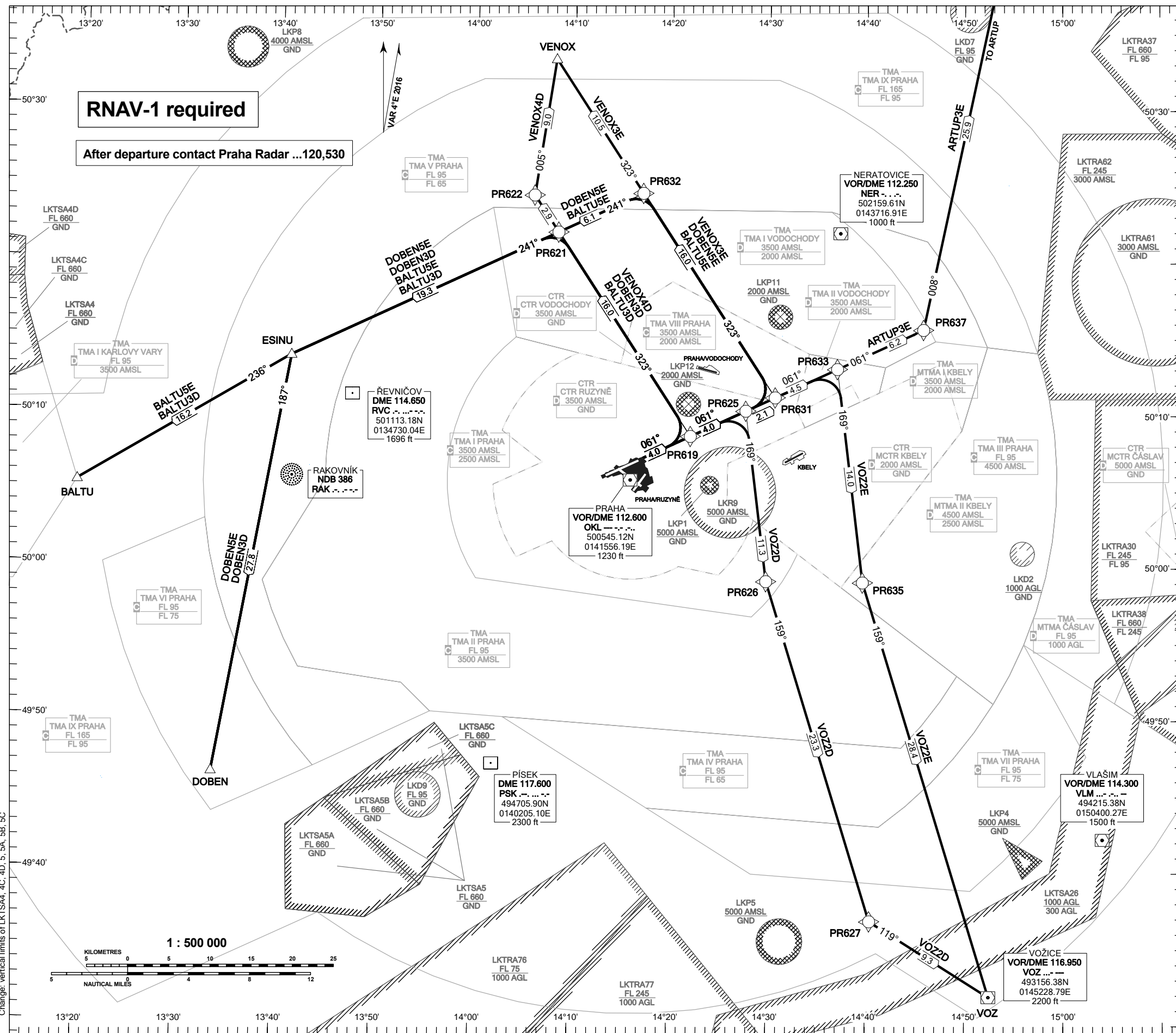


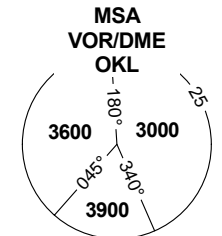
**RNAV STANDARD DEPARTURE CHART - INSTRUMENT
(SID) - ICAO**

**PRAHA/RUZYŇĚ
RNAV SID RWY 06**



RNAV-1 required
After departure contact Praha Radar ...120,530

| | |
|------------------------|---------|
| PRAHA RADAR | 120.530 |
| RUZYŇĚ RADAR | 118.310 |
| SUPPLEMENTARY FREQ APP | 119.010 |
| RUZYŇĚ DELIVERY | 136.080 |
| RUZYŇĚ TOWER | 120.060 |
| SUPPLEMENTARY FREQ TWR | 118.110 |
| RUZYŇĚ GROUND | 134.560 |
| RUZYŇĚ ATIS | 121.910 |
| EMERGENCY FREQ | 122.160 |
| | 121.500 |



TRANSITION ALTITUDE
5000

DEPARTURE SPEED LIMIT
BELOW FL 100

| | |
|-------|----------------|
| JETS | MAX IAS 250 KT |
| PROPS | MAX IAS 180 KT |

see AD 2-LKPR 2.22.3.3.6

BEARINGS, TRACKS AND
RADIALS ARE MAGNETIC
ALTITUDES AND ELEVATIONS
ARE IN FEET
DISTANCES ARE IN NM