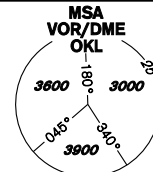


INSTRUMENT APPROACH CHART - ICAO

AERODROME ELEV **1234**
THR RWY 24 ELEV **1158**
OCH RELATED TO THR RWY 24

PRAHA RADAR 127,580
RUZYŇNÉ RADAR 119,010
SUPPLEMENTARY FREQ 136,080
121,500
134,560
RUZYŇNÉ TOWER SUPPLEMENTARY FREQ 118,110
121,500

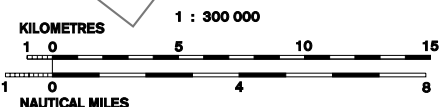
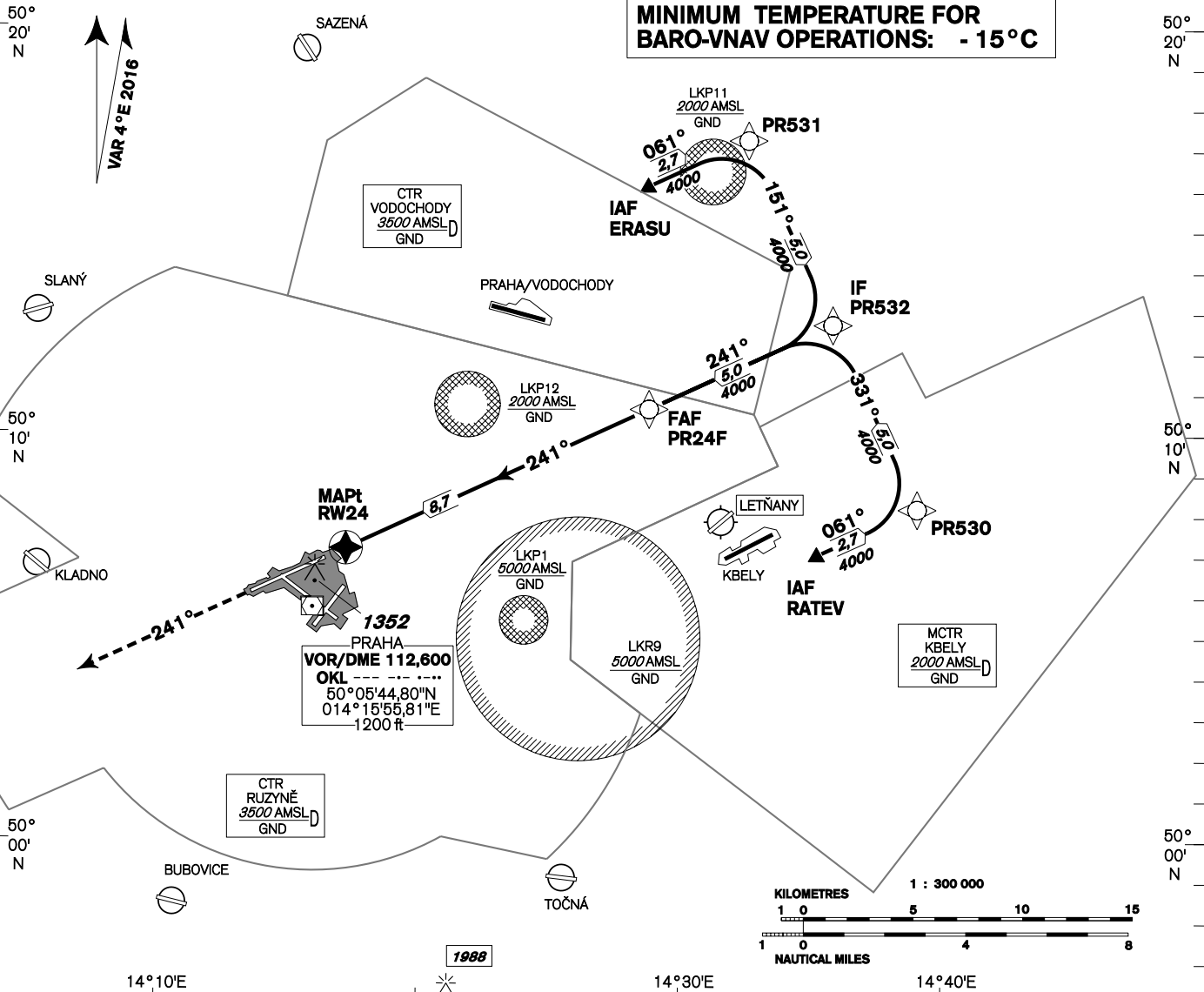


PRAHA/Ruzyňě RNAV (GNSS) RWY 24

BEARINGS, TRACKS AND RADIALS ARE MAGNETIC
ALTITUDES AND ELEVATIONS IN FEET AND DISTANCES NM

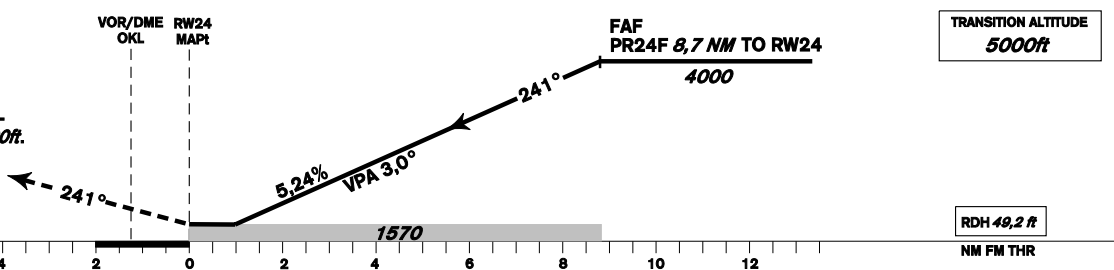
NERATOVICE
VOR/DME 112,250
NER
50°22'00"N
014°37'17"E
1000 ft

MINIMUM TEMPERATURE FOR BARO-VNAV OPERATIONS: -15 °C



MISSED APPROACH:
Climb on track 241° to 4000ft, radar vectoring will be provided.
In case of RCF climb on track 241° to 4000ft, at 10NM DME OKL turn right to OKL and climb to 5000ft.

THR 500657.42N, 0141624.12E
ELEV 1158



OCA/OCH		A	B	C	D
LNAV	ft	1570 / 410			
LNAV / VNAV	ft	1479 / 321			
Circling		see the circling approach chart			

DIST THR (MAPt) NM	9	8	7	6	5	4	3	2	1
ALTITUDES ft	4070	3750	3440	3120	2800	2480	2160	1840	1530

FAF - MAPt 8,7 NM	kt	80	100	120	140	160	180
	min:sec	6:34	5:15	4:23	3:45	3:17	2:55
Rate of descent (5,24%)	ft/min	420	530	640	740	850	960

Timing is not authorized for defining the MAPt.

change: RUZYŇNÉ TWR and SUPPLEMENTARY TWR FREQ

Seznam traťových bodů / Way point list	
ERASU	50 16 07,51 N 014 28 41,31 E
RATEV	50 07 03,32N 014 35 12,65 E
PR530	50 08 11,56 N 014 39 03,31 E
PR531	50 17 15,97 N 014 32 32,54 E
PR532	50 12 43,82 N 014 35 48,23 E
PR24F	50 10 38,79 N 014 28 46,27 E
RW24	50 06 57,42 N 014 16 24,12 E

Posloupnost traťových bodů / Way point sequence		
Od/from IAF ERASU		
ERASU	IAF	fly-by
PR531		fly-by
PR532	IF	fly-by
PR24F	FAF	fly-by
RW24	MAPt	fly-over

Posloupnost traťových bodů / Way point sequence		
Od/from IAF RATEV		
RATEV	IAF	fly-by
PR530		fly-by
PR532	IF	fly-by
PR24F	FAF	fly-by
RW24	MAPt	fly-over

