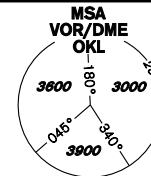


# INSTRUMENT APPROACH CHART - ICAO

AERODROME ELEV **1234**  
THR RWY 30 ELEV **1232**  
OCH RELATED TO THR RWY 30

PRAHA RADAR 127,580  
RUZYŇĚ RADAR 119,010  
SUPPLEMENTARY FREQ. 136,080  
121,500  
134,560  
RUZYŇĚ TOWER 118,110  
SUPPLEMENTARY FREQ. 121,500



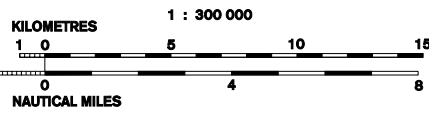
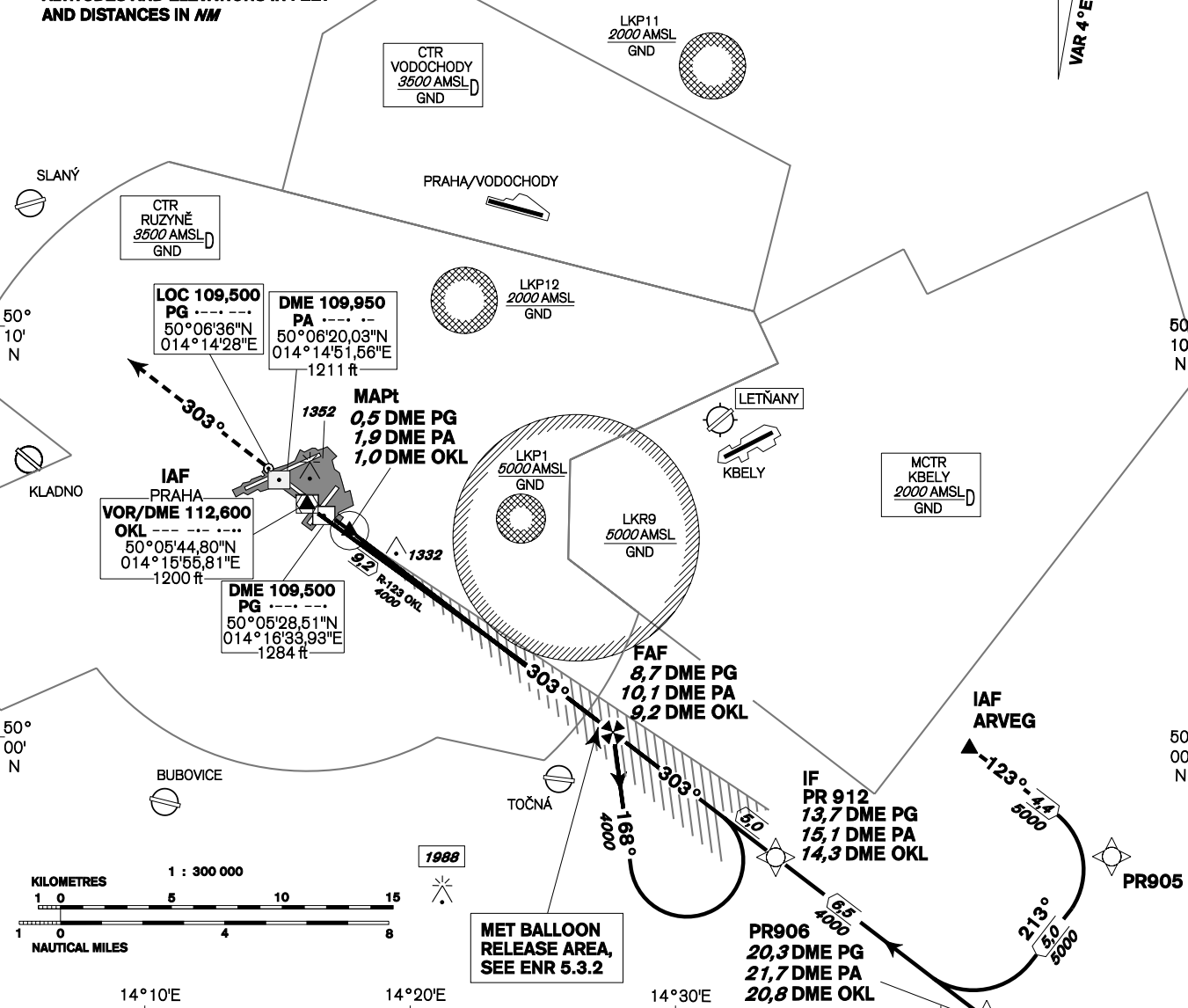
## PRAHA/Ruzyňě ILS RWY 30

AIRCRAFT NOT EQUIPPED FOR RNAV-1 SHOULD EXPECT RADAR VECTORED AFTER IAF ARVEG

**DME REQUIRED**

BEARINGS, TRACKS AND RADIALS ARE MAGNETIC  
ALTITUDES AND ELEVATIONS IN FEET  
AND DISTANCES IN NM

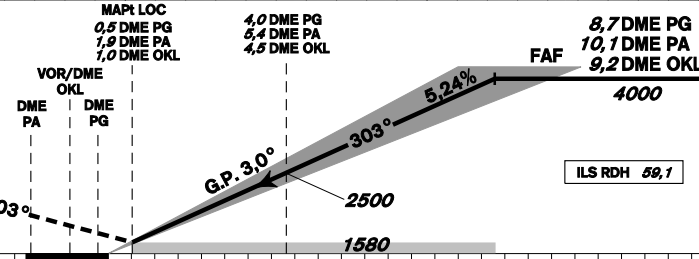
NERATOVICE  
VOR/DME 112,250  
NER .....  
50°22'00"N  
014°37'17"E  
1000 ft



MET BALLOON RELEASE AREA, SEE ENR 5.3.2

**MISSED APPROACH:**  
Climb on track 303° to 4000ft, radar vectoring will be provided.  
In case of RCF climb on track 303° to 4000ft, at 10NM DME OKL turn right to OKL and climb to 5000ft.

THR 500525.68N, 0141654.02E  
ELEV 1232



TRANSITION ALTITUDE  
**5000ft**

ILS RDH 58,1

OCA/OCH		A	B	C	D
Straight-in Approach	Cat I	ft 1369 / 137	1377 / 145	1387 / 155	1395 / 163
	LOC	ft 1580 / 350			
Circling		see the circling approach chart			

DME PG	NM	NM FM THR									
		9	8	7	6	5	4	3	2	1	
DME PA	NM	10,4	9,4	8,4	7,4	6,4	5,4	4,4	3,4	2,4	
DME OKL	NM	9,5	8,5	7,5	6,5	5,5	4,5	3,5	2,5	1,5	
DIST THR	NM	8,8	7,8	6,8	5,8	4,8	3,8	2,8	1,8	0,8	
ALTITUDES	ft	4080	3780	3480	3140	2820	2500	2180	1880	1540	

FAF - MAPt 8,2 NM	Rate of descent	ft/min				
		6:11	4:57	4:07	3:32	3:05
kt		80	100	120	140	160
min:sec		6:11	4:57	4:07	3:32	3:05
ft/min		420	530	640	740	850

Timing is not authorized for defining the MAPt.