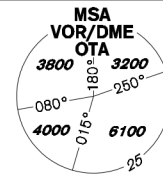


# INSTRUMENT APPROACH CHART - ICAO

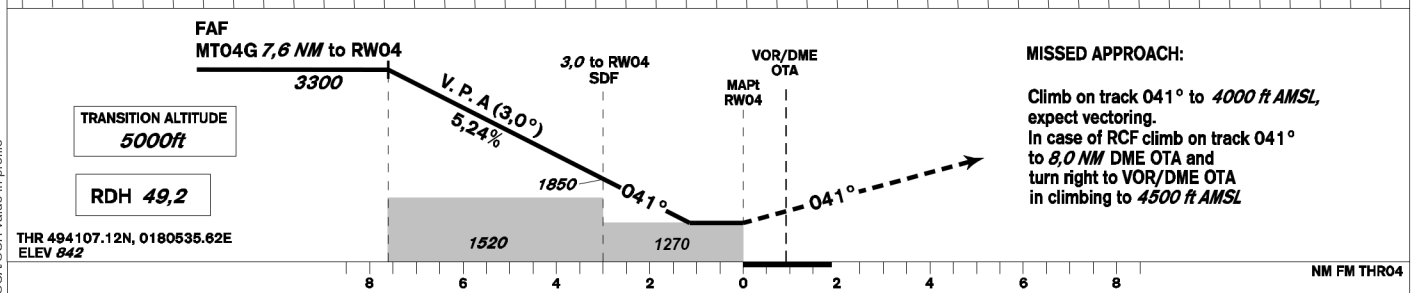
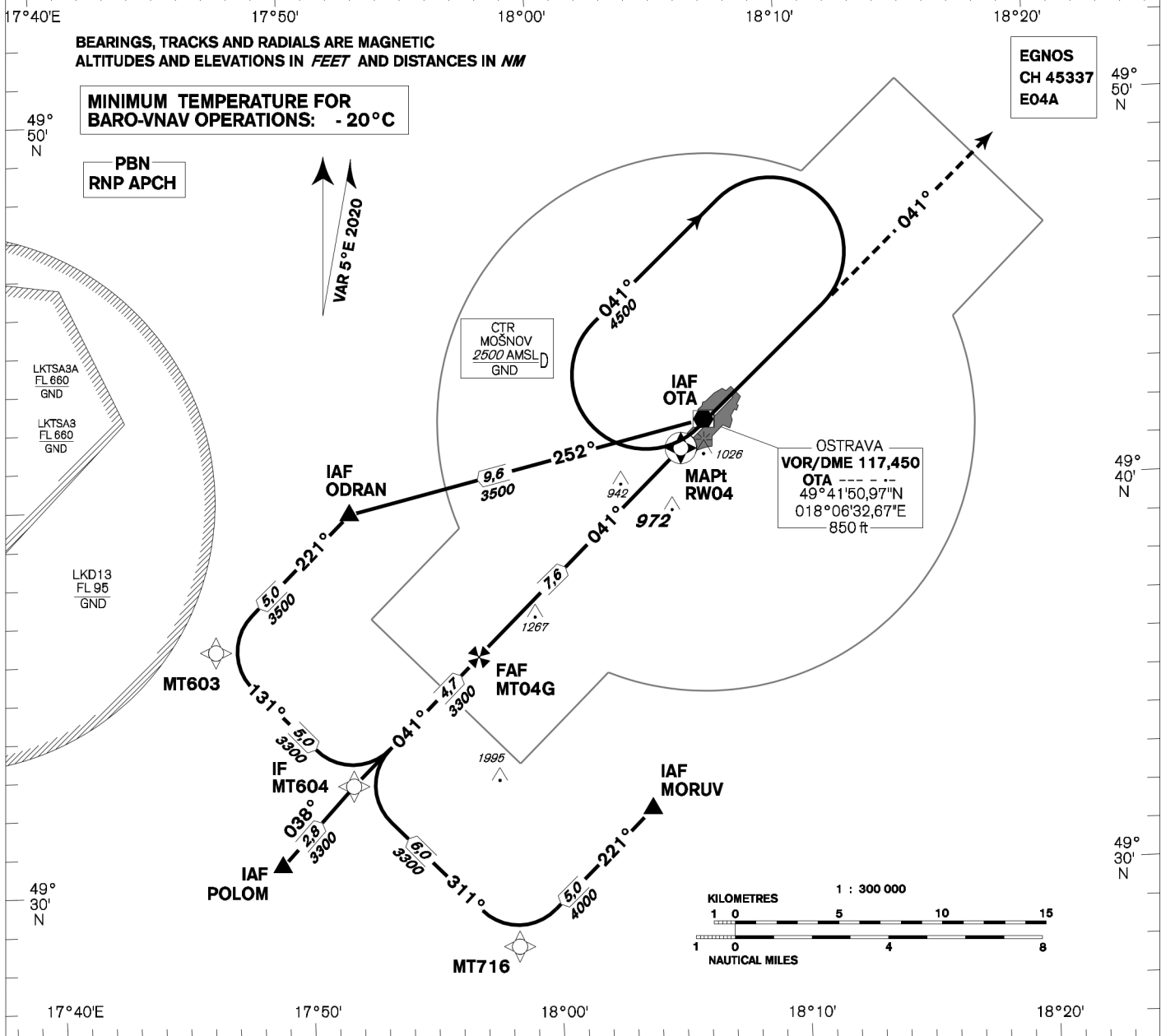
AERODROME ELEV **844**  
THR RWY 04 ELEV **842**  
OCH RELATED TO THR RWY 04

PRAHA RADAR 119,375  
121,500  
MOŠNOV TOWER 120,805  
121,500



**OSTRAVA/Mošnov  
RNP  
RWY 04**

**RWY 04**



OCA/OCH	A	B	C	D	
LNAV	ft	1270/430			
LNAV/VNAV	ft	1173/331			
LPV	ft	1092/250			
Circling	ft	1400/560	1440/600	1640/790	2100/1260

FAF - MAPt (RW04) NM	7	6	5	4	3	2	1
ALTITUDES ft	3120	2800	2480	2160	1850	1530	1210
MT04G - MAPt (RW04) 7,6 NM	kt	80	100	120	140	160	180
min:sec	5:40	4:30	3:47	3:14	2:50	2:31	
Rate of descent	ft/min	420	530	640	740	850	960

Timing is not authorized for defining the MAPt.

Posloupnost traťových bodů / Way point sequence

Od / From IAF POLOM		
POLOM	IAF	fly-by
MT604	IF	fly-by
MT04G	FAF	fly-by
RW04	MAPt	fly-over

Od / From IAF ODRAN a / and IAF VOR/DME OTA		
VOR/DME OTA	IAF	fly-by
ODRAN	IAF	fly-by
MT603		fly-by
MT604	IF	fly-by
MT04G	FAF	fly-by
RW04	MAPt	fly-over

Od / From IAF MORUV		
MORUV	IAF	fly-by
MT716		fly-by
MT604	IF	fly-by
MT04G	FAF	fly-by
RW04	MAPt	fly-over

Seznam traťových bodů / Way point list	
MORUV	49 31 47,08 N 018 03 54,51 E
ODRAN	49 39 42,82 N 017 52 12,89 E
POLOM	49 30 37,51 N 017 49 02,68 E
VOR/DME OTA	49 41 50,97 N 018 06 32,67 E
MT603	49 36 15,10 N 017 46 40,55 E
MT604	49 32 39,25 N 017 52 00,00 E
MT716	49 28 19,92 N 017 58 22,29 E
MT04G	49 35 53,68 N 017 57 11,34 E
RW04	49 41 07,16 N 018 05 35,69 E

SBAS FAS Data Block

Vstupní data / Input Data

Parametry / Parameters	Hodnoty / Values
Operation Type	0
SBAS Provider	1 (EGNOS)
Airport Identifier	LKMT
Runway	04
Runway Letter	0 (None)
Approach Performance Designator	0
Route Indicator	
Reference Path Data Selector	0
Reference Path Identifier	E04A
LTP/FTP Latitude	494107.1200N
LTP/FTP Longitude	0180535.6200E
LTP/FTP Ellipsoidal Height (metres)	299.5
FPAP Latitude	494225.6600N
Delta FPAP Latitude (seconds)	78.5400
FPAP Longitude	0180742.4200E
Delta FPAP Longitude (seconds)	126.8000
Threshold Crossing Height	49.2
TCH Units Selector	0 (feet)
Glidepath Angle (degrees)	3.00
Course Width (metres)	105.00
Length Offset (metres)	0
HAL (metres)	40.0
VAL (metres)	50.0

Výstupní data / Output Data

Parametry / Parameters	Hodnoty / Values
Data Block	10 14 0D 0B 0C 04 00 00 01 34 30 05 60 97 52 15 08 C8 C3 07 B3 1F 98 65 02 A0 DE 03 EC 01 2C 01 64 00 C8 FA 33 E1 58 79
Calculated CRC Value	33E15879

Required Additional Data (not CRC wrapped)

These additional data are not required for CRC calculation, but they need to be provided to datahouses for procedure coding in ARINC 424 records

Parametry / Parameters	Hodnoty / Values
ICAO Code	LK
LTP/FTP Orthometric Height (metres)	256.5