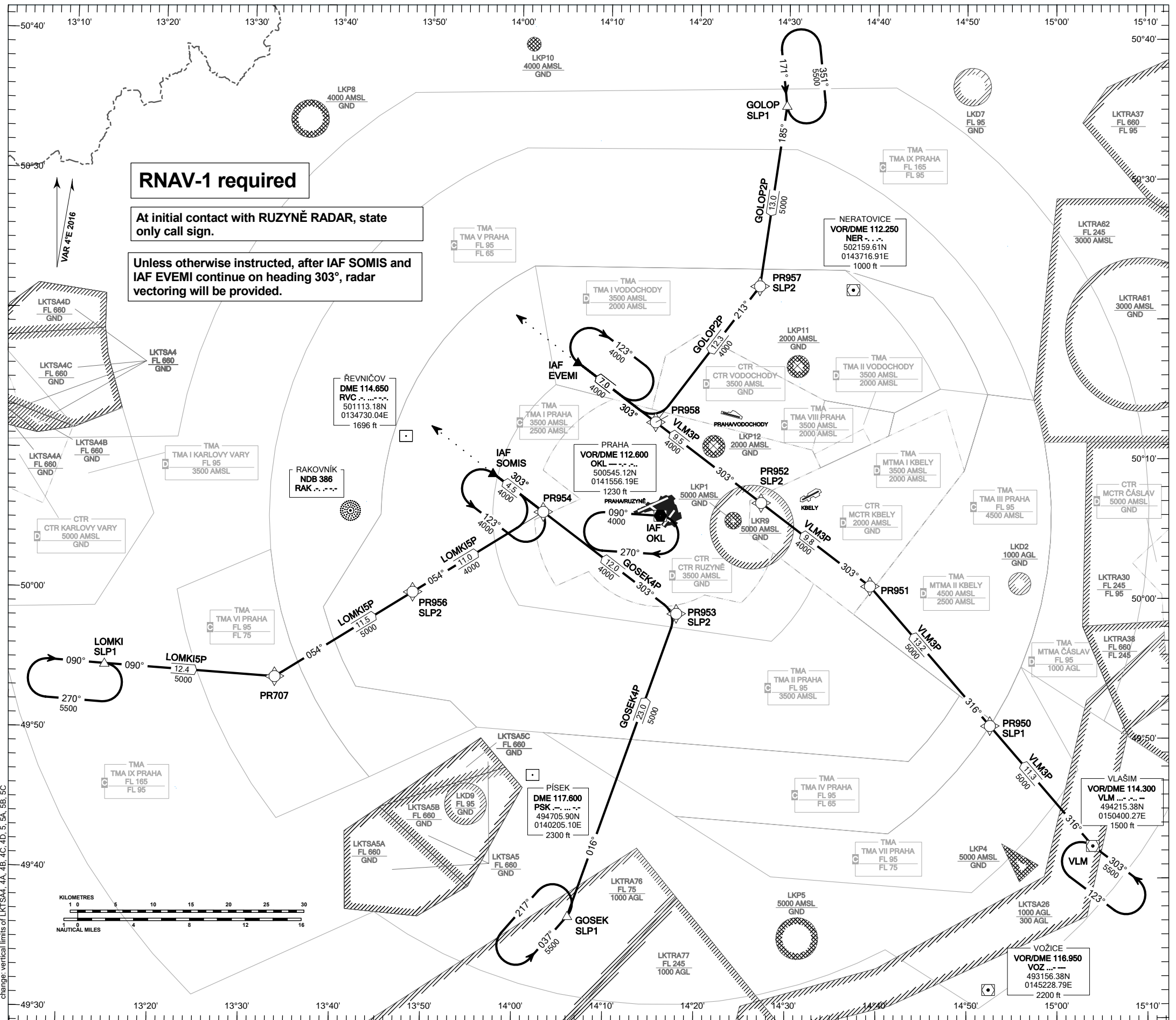


**RNAV STANDARD ARRIVAL CHART - INSTRUMENT
(STAR) - ICAO**

**PRAHA/RUZYŇĚ
RNAV STAR RWY 12**

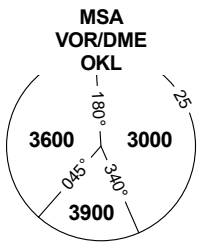


RNAV-1 required

At initial contact with RUZYŇĚ RADAR, state only call sign.

Unless otherwise instructed, after IAF SOMIS and IAF EVEMI continue on heading 303°, radar vectoring will be provided.

PRAHA APPROACH / RADAR	120.530
RUZYŇĚ APPROACH / RADAR	127.580
RUZYŇĚ RADAR / INFORMATION	118.310
SUPPLEMENTARY FREQ APP	136.080
RUZYŇĚ DELIVERY	120.060
RUZYŇĚ TOWER	118.110
SUPPLEMENTARY FREQ TWR	134.560
RUZYŇĚ GROUND	121.910
RUZYŇĚ ATIS	122.160
EMERGENCY FREQ	121.500



TRANSITION ALTITUDE
5000

SPEED LIMITING POINT	
SLP1	MAX IAS 250 KT
SLP2	MAX IAS 220 KT

BEARINGS, TRACKS AND RADIALS ARE MAGNETIC
ALTITUDES AND ELEVATIONS ARE IN FEET
DISTANCES ARE IN NM

REF AIP AD 2-LKPR-25, 2.22.3.2.1.