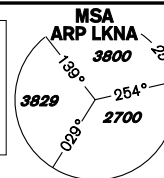


INSTRUMENT APPROACH CHART - ICAO

AERODROME ELEV 1547
THR RWY 13 ELEV 1547
THR RWY 31 ELEV 1496
OCH RELATED TO THR RWY 31

NÁMEŠŤ APPROACH/ 118,155 266,200 O/R
RADAR
PRECISION 283,900 123,300 reserve
TOWER 126,505 119,830 reserve



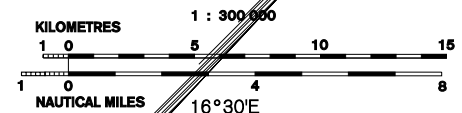
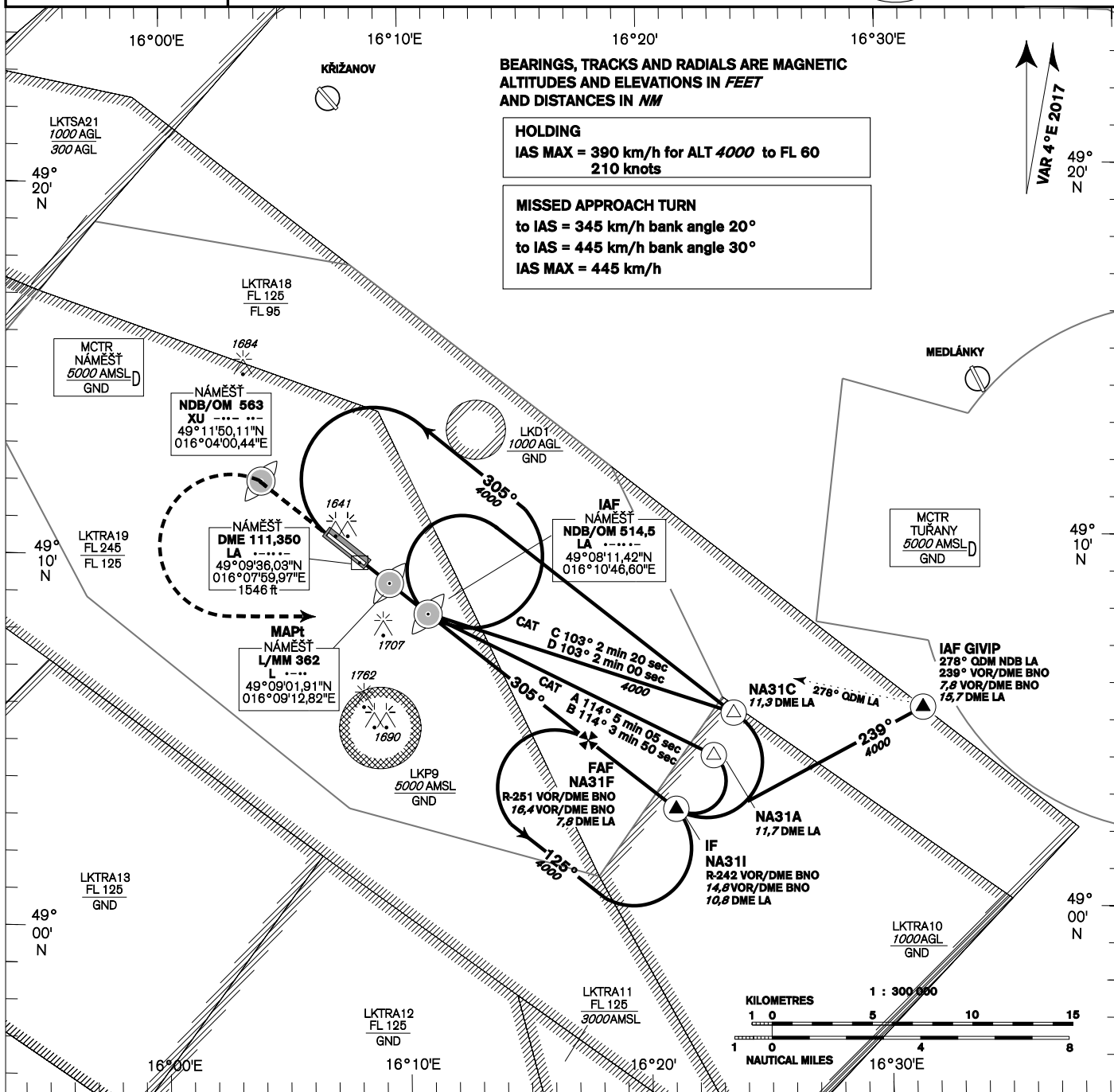
NÁMEŠŤ NDB RWY 31

BEARINGS, TRACKS AND RADIALS ARE MAGNETIC
ALTITUDES AND ELEVATIONS IN FEET
AND DISTANCES IN NM

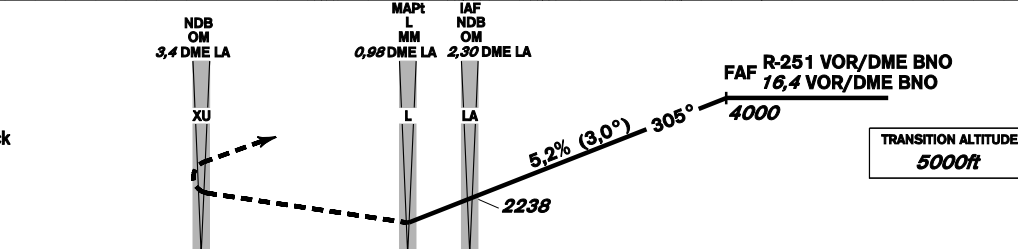
HOLDING
IAS MAX = 390 km/h for ALT 4000 to FL 60
210 knots

MISSED APPROACH TURN
to IAS = 345 km/h bank angle 20°
to IAS = 445 km/h bank angle 30°
IAS MAX = 445 km/h

VAR 4°E 2017



MISSED APPROACH:
Proceed to NDB XU in climbing 4000ft passing NDB XU turn left to NDB LA
In the case of RCF on final approach track without landing clearance follow the missed approach procedure
THR 490933.73N 0160913.58E
ELEV 1496
DISTANCE IN NM FROM THR RWY 31



change: new procedures, MISSED APPROACH, table

OCA/OCH	A	B	C	D
Straight-in Approach	1873 / 377	1873 / 377		
Circling (NORTH ONLY)	1936	1988	2086	2185

	81	100	122	141	162	184
kt	81	100	122	141	162	184
km/h	150	185	225	260	300	340
min:sec	5:05	4:07	3:23	2:56	2:32	2:14
m/s	2,2	2,7	3,3	3,8	4,4	5,0
ft/min	433	532	650	748	866	984

Timing is not authorized for defining the MAPt.

Seznam traťových bodů / Way point list		
LA (NDB)	49 08 12 N	016 10 47 E
L (L)	49 09 02 N	016 09 13 E
NA31A	49 04 16 N	016 22 23 E
NA31C	49 05 24 N	016 23 14 E
NA31I	49 02 52 N	016 20 55 E
NA31F	49 04 44 N	016 17 31 E
XU (NDB)	49 11 50 N	016 04 00 E