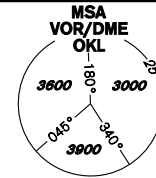


INSTRUMENT APPROACH CHART - ICAO

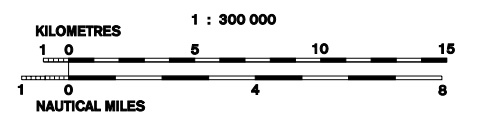
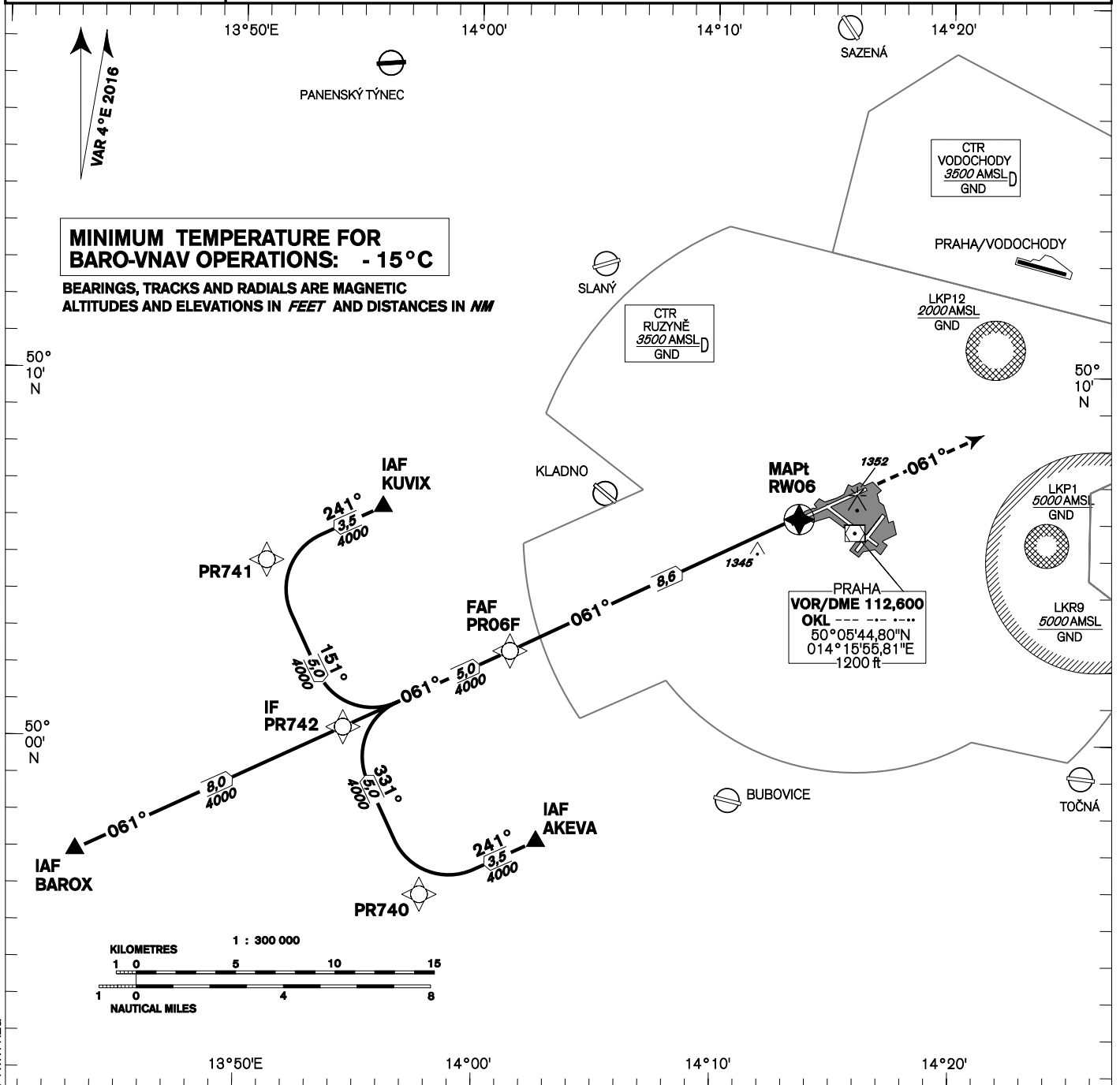
AERODROME ELEV 1234
THR RWY 06 ELEV 1202
OCH RELATED TO THR RWY 06

PRAHA RADAR 127,580
RUZYŇĚ RADAR 119,010
SUPPLEMENTARY FREQ 136,080
121,500
134,560
RUZYŇĚ TOWER 118,110
SUPPLEMENTARY FREQ 121,500

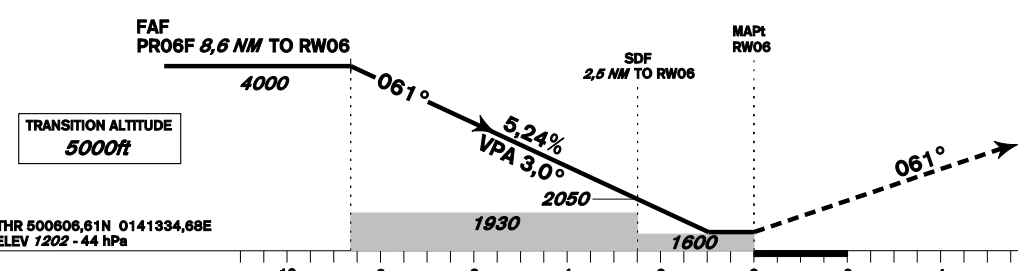


PRAHA/Ruzyňě RNAV (GNSS) RWY 06

**MINIMUM TEMPERATURE FOR
BARO-VNAV OPERATIONS: -15°C**
BEARINGS, TRACKS AND RADIALS ARE MAGNETIC
ALTITUDES AND ELEVATIONS IN FEET AND DISTANCES IN NM



change: RUZYŇĚ TWR and SUPPLEMENTARY TWR FREQ



MISSED APPROACH:
Climb on track 061° to 4000ft, radar vectoring will be provided.
In case of RCF climb on track 061° to 4000ft, at 10NM DME OKL turn left to OKL and climb to 5000ft.

OCA/OCH	A	B	C	D	
	ft	1600 / 400			
	ft	1515 / 313			
	Circling see the circling approach chart				

DIST THR (MAPt) NM	9	8	7	6	5	4	3	2	1
ALTITUDES ft	4120	3800	3480	3160	2840	2530	2210	1890	1570

FAF - MAPt 8,6 NM	kt	80	100	120	140	160	180
	min:sec	6:28	5:10	4:18	3:42	3:14	2:52
Rate of descent (5,24%)	ft/min	430	530	640	740	850	960

Timing is not authorized for defining the MAPt.

Seznam traťových bodů / Way point list	
KUVIX	50 06 19,91 N 013 56 01,47 E
AKEVA	49 57 17,56 N 014 02 37,59 E
BAROX	49 56 54,77 N 013 43 15,06 E
PR740	49 55 48,83 N 013 5745,19 E
PR741	50 04 50,89 N 013 51 08,37 E
PR742	50 00 19,91 N 013 54 27,10 E
PR06F	50 02 27,19 N 014 01 26,71 E
RW06	50 06 06,61 N 014 13 34,68 E

Posloupnost traťových bodů / Way point sequence Od IAF KUVIX/From IAF KUVIX		
KUVIX	IAF	fly-by
PR741		fly-by
PR742	IF	fly-by
PR06F	FAF	fly-by
RW06	MAPt	fly-over

Posloupnost traťových bodů / Way point sequence Od IAF AKEVA/From IAF AKEVA		
AKEVA	IAF	fly-by
PR740		fly-by
PR742	IF	fly-by
PR06F	FAF	fly-by
RW06	MAPt	fly-over

Posloupnost traťových bodů / Way point sequence Od IAF BAROX/From IAF BAROX		
BAROX	IAF	fly-by
PR742	IF	fly-by
PR06F	FAF	fly-by
RWY06	MAPt	fly-over