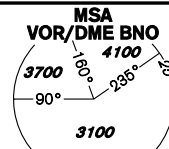


# INSTRUMENT APPROACH CHART - ICAO

AERODROME ELEV 778  
THR RWY 27 ELEV 771  
OCH RELATED TO THR RWY 27

TUŘANY/TOWER 119,605  
125,430  
121,500  
BRNO APPROACH/RADAR 127,350  
120,555  
121,500



## BRNO/Tuřany RNAV (GNSS) RWY 27

EGNOS  
CH 46172  
E27A

BEARINGS ARE MAGNETIC  
ALTITUDES AND ELEVATIONS IN FEET  
AND DISTANCES IN NM

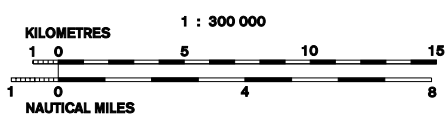
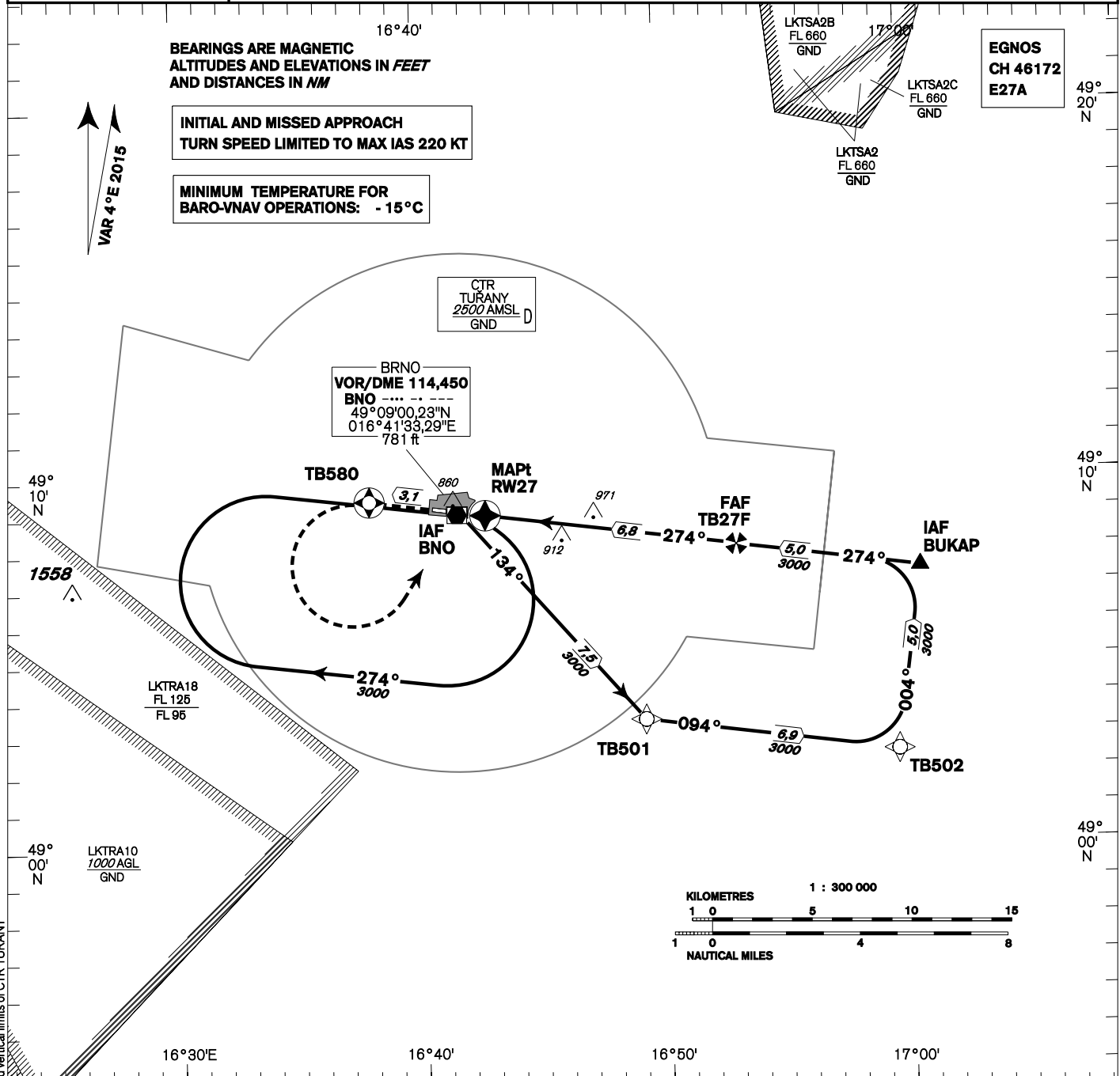
INITIAL AND MISSED APPROACH  
TURN SPEED LIMITED TO MAX IAS 220 KT

MINIMUM TEMPERATURE FOR  
BARO-VNAV OPERATIONS: -15°C

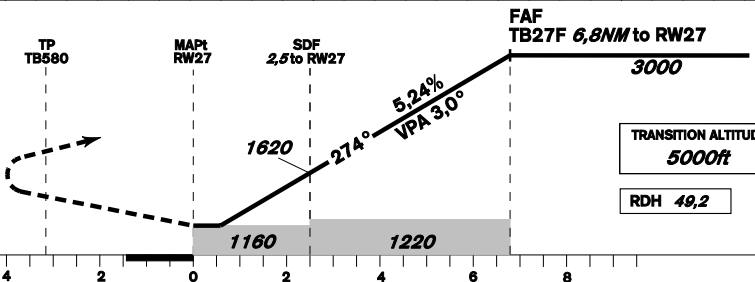


CTR  
TUŘANY  
2500 AMSL  
GND

BRNO  
VOR/DME 114,450  
BNO ---  
49°09'00,23"N  
016°41'33,29"E  
781 ft



MISSED APPROACH:  
Climb to TB580,  
turn left to VOR/DME BNO  
in climbing to 3000ft.



THR 490859.12N 0164242.83E  
ELEV 771

OCA/OCH		A	B	C	D
LNAV	ft	1160/390			
LNAV/VNAV	ft	1060/290			
LPV	ft	1020/250			
Circling	ft	1210 L/-	1440 L/-	1560 L/-	1740 L/-

DIST THR NM	7	6	5	4	3	2	1
ALTITUDES ft	3050	2730	2410	2090	1770	1450	1140

	kt	80	100	120	140	160	180
FAF - MAPt 6,8 NM	min:sec	5:08	4:06	3:25	2:56	2:34	2:17
Rate of descent	ft/min	420	530	640	740	850	960

Timing is not authorized for defining the MAPt.

Posloupnost traťových bodů / Way point sequence

Od / From IAF BUKAP		
BUKAP	IAF	fly-by
TB27F	FAF	fly-by
RW27	MAPt	fly-over
TB580		fly-over
VOR/DME BNO		

Od / From IAF VOR/DME BNO		
VOR/DME BNO	IAF	fly-by
TB501		fly-by
TB502		fly-by
BUKAP	IF	fly-by
TB27F	FAF	fly-by
RW27	MAPt	fly-over
TB580		fly-over
VOR/DME BNO		

Seznam traťových bodů / Way point list		
BUKAP	49 07 24,66 N	017 00 36,17 E
VOR/DME BNO	49 09 00,23 N	016 41 33,29 E
TB501	49 03 22,94 N	016 49 11,05 E
TB502	49 02 27,72 N	016 59 34,69 E
TB27F	49 08 04,91 N	016 53 02,78 E
RW27	49 08 59,12 N	016 42 42,83 E
TB580	49 09 23,81 N	016 37 56,75 E

SBAS FAS Data Block

Vstupní data / Input Data

Parametry / Parameters	Hodnoty / Values
Operation Type	0
SBAS Provider	1
Airport Identifier	LKTB
Runway	27
Runway Direction	0
Approach Performance Designator	0
Route Indicator	
Reference Path Data Selector	0
Reference Path Identifier	E27A
LTP/FTP Latitude	490859.1200N
LTP/FTP Longitude	0164242.8300E
LTP/FTP Ellipsoidal Height (metres)	279.2
FPAP Latitude	490910.3400N
Delta FPAP Latitude (seconds)	11.2200
FPAP Longitude	0164033.1300E
Delta FPAP Longitude (seconds)	-129.7000
Threshold Crossing Height	49.2
TCH Units Selector	0
Glidepath Angle (degrees)	3.00
Course Width (metres)	105.00
Length Offset (metres)	0
HAL (metres)	40.0
VAL (metres)	50.0

Výstupní data / Output Data

Parametry / Parameters	Hodnoty / Values
Data Block	10 02 14 0B 0C 1B 00 00 01 37 32 05 E0 C0 17 15 1C 06 2C 07 E8 1E A8 57 00 B8 0A FC EC 01 2C 01 64 00 C8 FA C8 3F 3C 14
Calculated CRC Value	C83F3C14

Required Additional Data (not CRC wrapped)

These additional data are not required for CRC calculation, but they need to be provided to datahouses for procedure coding in ARINC 424 records.

Parametry / Parameters	Hodnoty / Values
ICAO Code	LK
LTP/FTP Orthometric Height (metres)	234.9
FPAP Orthometric Height (metres)	233.0