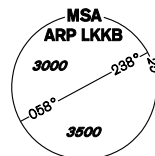


INSTRUMENT APPROACH CHART - ICAO

AERODROME ELEV **939**
THR RWY 06 ELEV **939**
THR RWY 24 ELEV **916**
ARP **919**
OCH RELATED TO THR RWY 24

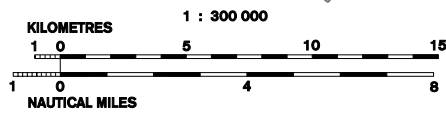
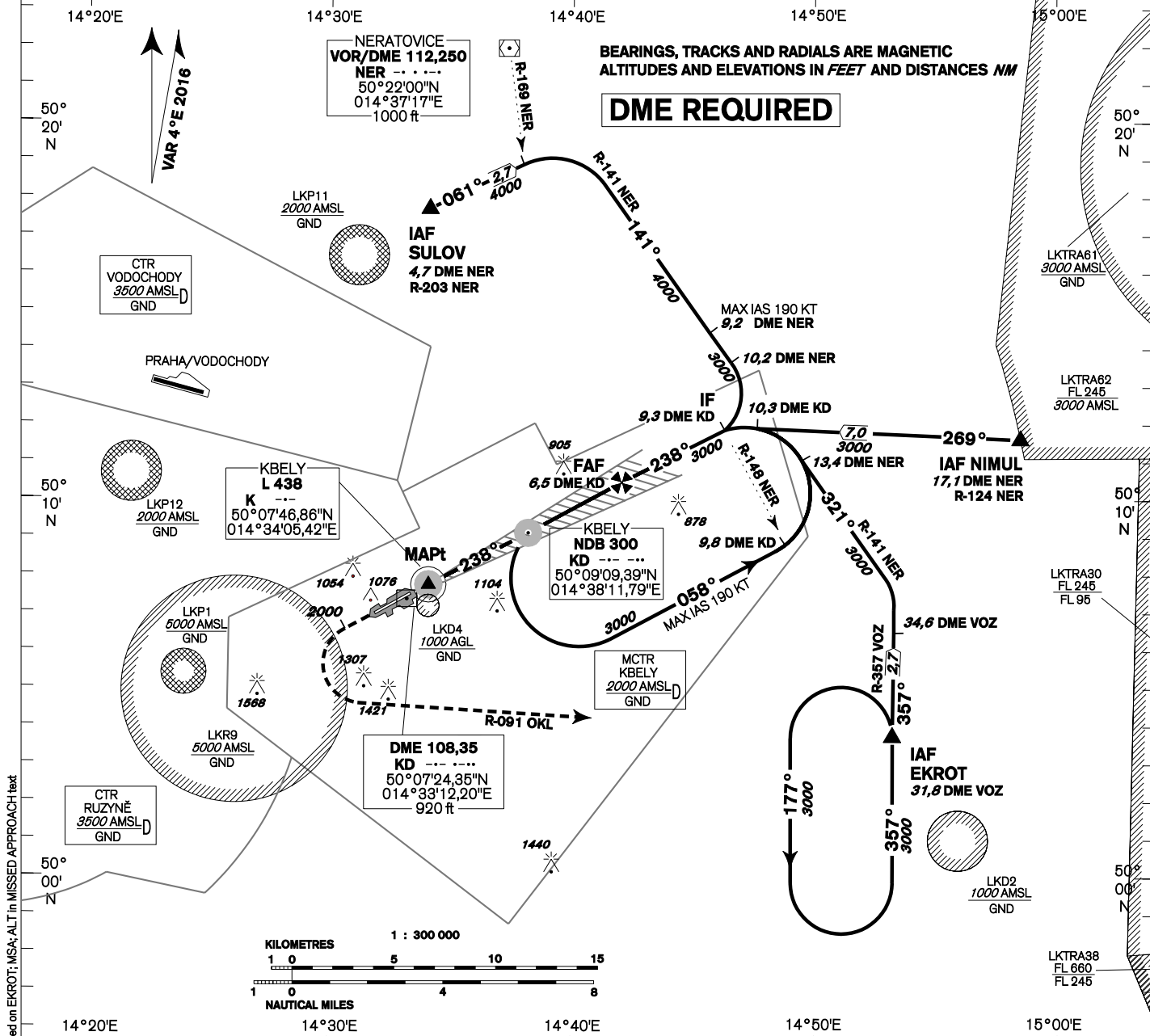
KBELY APPROACH/ RADAR 124,680 279,000 reserve
KBELY PRECISION 126,760 123,300 reserve
KBELY TOWER 120,880 134,730 reserve



KBELY ILS RWY 24

BEARINGS, TRACKS AND RADIALS ARE MAGNETIC
ALTITUDES AND ELEVATIONS IN FEET AND DISTANCES NM

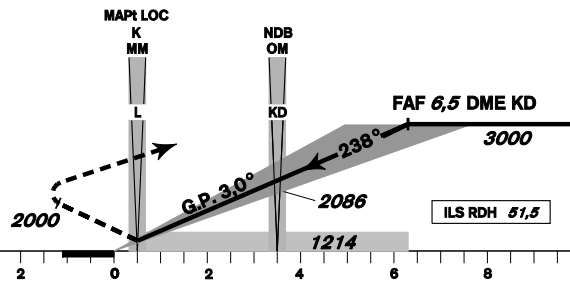
DME REQUIRED



change: minimum ALT of holding pattern based on EKROT; MSA; ALT in MISSED APPROACH text

MISSED APPROACH:
Climb to 2000ft max 2,7NM
KD DME turn left intercept radial
R 091 OKL then climb 3000ft
continue to EKROT

THR 500731.93N, 0143321.70E
ELEV 916 - 33 hPa



TRANSITION ALTITUDE
5000ft

MISSED APPROACH:
to IAS ≤ 190 kt min. bank angle 15°
to IAS ≤ 235 kt min. bank angle 20°
IAS MAX = 235 KT

DME KD	NM	6,5	5,0	4,0	3,0	2,0	1,0	0,5
ALTITUDES	ft	3000	2500	2241	1912	1607	1286	1115

OCA/OCH		A	B	C	D
Straight - in Approach	Cat I	ft 1115 / 197	1119 / 200	1128 / 210	1138 / 220
	LOC	ft 1214 / 296			
Circling (South only)		ft 1345 L / -	1656 L / -	1971 L / -	-

	kt	60	90	120	150	180
FAF - MAPt 5,8 NM	min:sec	5:49	3:53	2:55	2:20	1:57
Rate of descent	ft/min	315	470	640	790	960

Timing is not authorized for defining the MAPt.