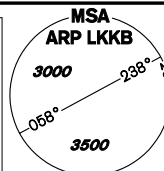


# INSTRUMENT APPROACH CHART - ICAO

**AERODROME ELEV 939**  
**THR RWY 06 ELEV 939**  
**THR RWY 24 ELEV 916**  
**ARP 919**  
**OCH RELATED TO THR RWY 24**

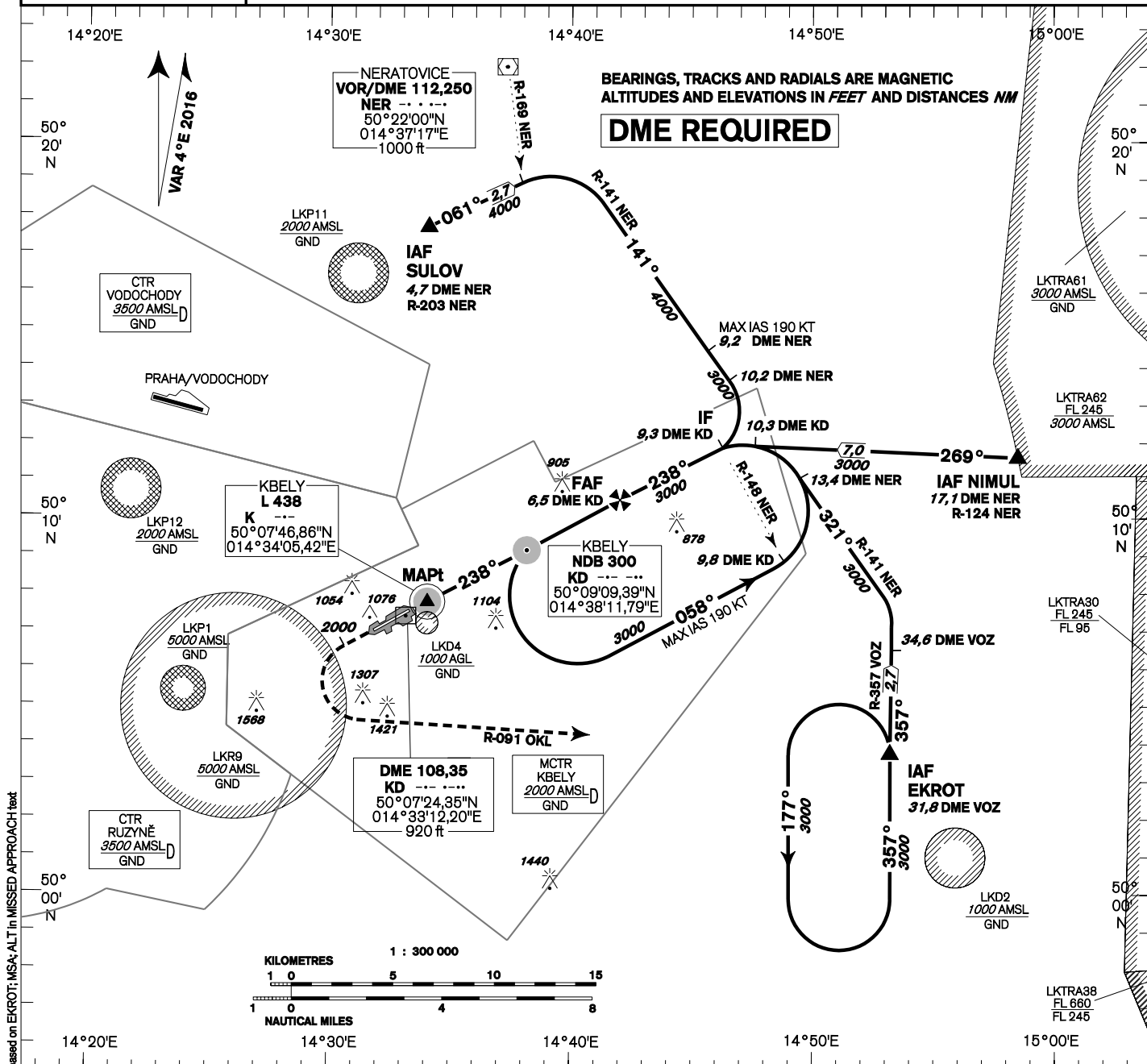
**KBELY APPROACH/ 124,680 279,000 reserve**  
**RADAR**  
**KBELY PRECISION 126,760 123,300 reserve**  
**315,000 reserve**  
**KBELY TOWER 120,880 134,730 reserve**



**KBELY NDB RWY 24**

BEARINGS, TRACKS AND RADIALS ARE MAGNETIC  
 ALTITUDES AND ELEVATIONS IN FEET AND DISTANCES NM

**DME REQUIRED**



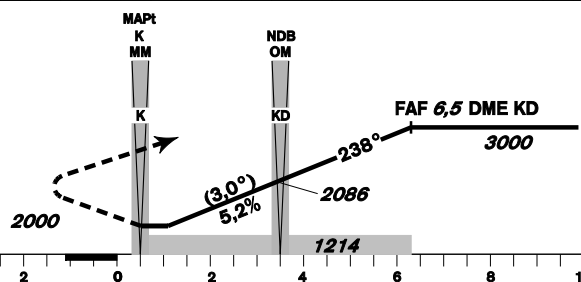
change: minimum ALT of holding pattern based on EKROT; MSA; ALT in MISSED APPROACH text

**MISSED APPROACH:**  
 Climb to 2000ft max 2,7NM  
 KD DME turn left intercept radial R 091  
 OKL then climb 3000ft  
 continue to EKROT

**TRANSITION ALTITUDE**  
 5000ft

**MISSED APPROACH:**  
 to IAS ≤ 190 kt min. bank angle 15°  
 to IAS ≤ 235 kt min. bank angle 20°  
 IAS MAX = 235 KT

THR 500731.93N, 0143321.70E  
 ELEV 916 -33 hPa



OCA/OCH		A	B	C	D	
Straight-in Approach	NDB	ft	1214/296			
Straight-in Approach	PAR	ft	1155/239			
Circling (South only)	ft	1345	1656	1971	-	

DME KD	NM	6,5	5,0	4,0	3,0	2,0	1,0	0,5
ALTITUDES	ft	3000	2500	2241	1912	1607	1286	1115

	kt	60	90	120	150	180
FAF - MAPt 5,8 NM	min:sec	5:49	3:53	2:55	2:20	1:57
Rate of descent	ft/min	315	470	640	790	960

Timing is not authorized for defining the MAPt.