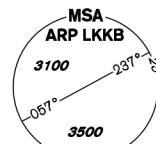


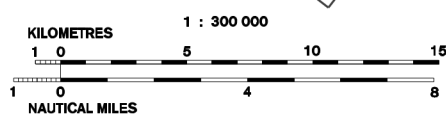
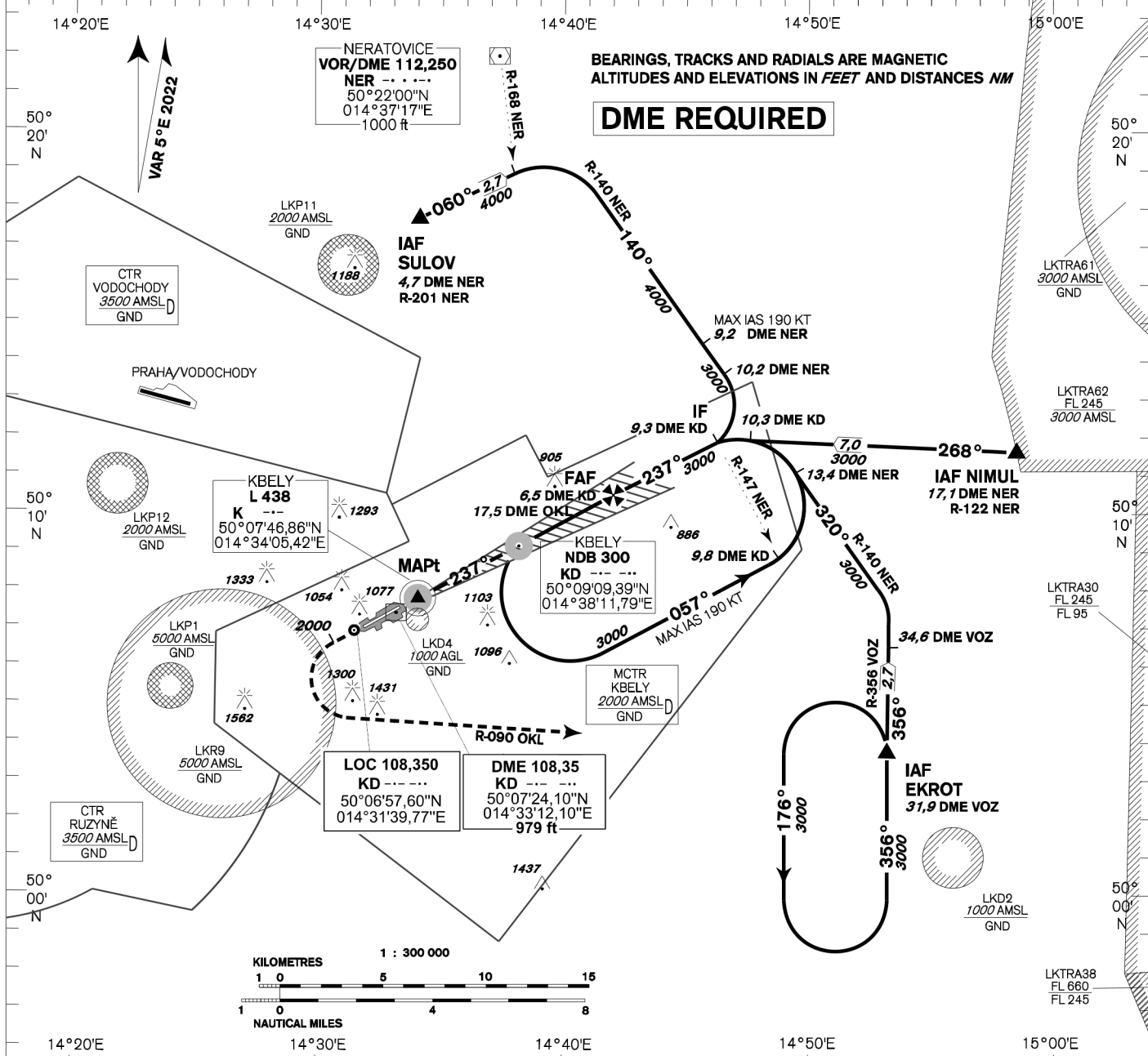
# INSTRUMENT APPROACH CHART - ICAO

AERODROME ELEV **939**  
THR RWY 06 ELEV **939**  
THR RWY 24 ELEV **916**  
ARP **919**  
OCH RELATED TO THR RWY 24

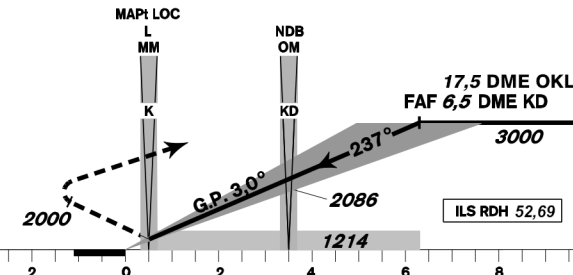
KBELY RADAR 124,680 291,050 reserve  
KBELY PRECISION 126,760 123,300 reserve  
315,000 reserve  
KBELY TOWER 120,880 134,730 reserve



**KBELY  
ILS  
RWY 24**



**MISSED APPROACH:**  
Climb to **2000ft** MAX **2,7NM**  
KD DME/MNM **8,7NM** OKL DME,  
turn left intercept radial R 090 OKL  
then climb to **3000ft** continue to EKROT



TRANSITION ALTITUDE  
**5000ft**

**MISSED APPROACH:**  
to IAS ≤ 185 kt min. bank angle 15°  
to IAS ≥ 230 kt min. bank angle 20°  
IAS MAX = 230 KT

THR 500731.93N, 0143321.70E  
ELEV **916**

DME KD	NM	6,5	5,0	4,0	3,0	2,0	1,0	0,5
ALTITUDES	ft	3000	2500	2241	1912	1607	1286	1115

OCA/OCH		A	B	C	D
Straight-in Approach	Cat I	ft 1115 / 197	1119 / 200	1128 / 210	1138 / 220
	LOC	ft 1214 / 296			
Circling (South only)		ft 1345 L / -	1656 L / -	1971 L / -	-

	kt	60	90	120	150	180
FAF - MAPt <b>5,8 NM</b>	min:sec	5:49	3:53	2:55	2:20	1:57
Rate of descent	ft/min	315	470	640	790	960

Timing is not authorized for defining the MAPt.

Change: ELEV and position of DME KD; ILS/LOC KD; ILS RDH; FAF Distance