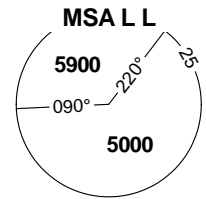


OMNIDIRECTIONAL DEPARTURES CHART

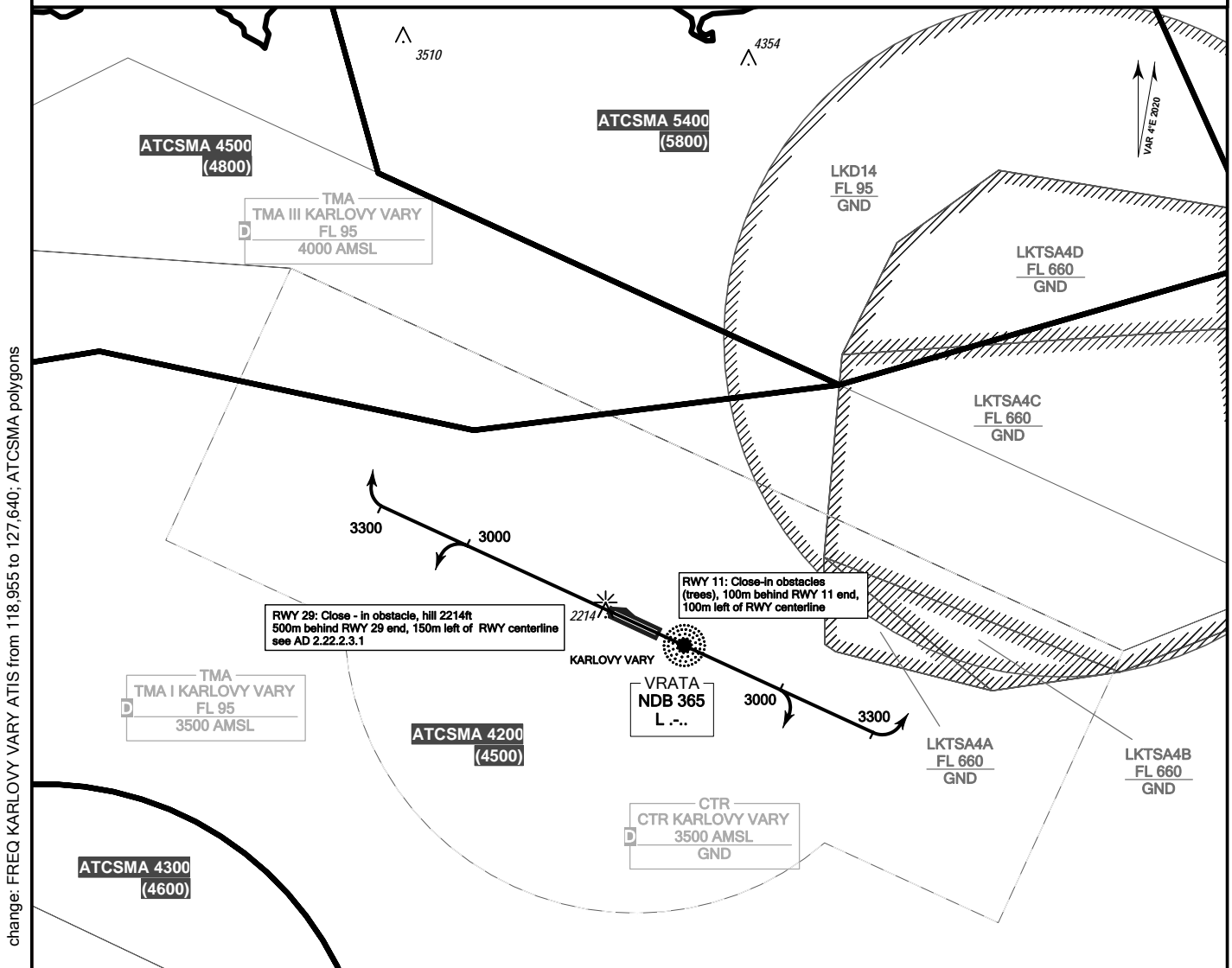
KARLOVY VARY

PRAHA RADAR	118.650
VARY TOWER	121.230
KARLOVY VARY ATIS	127.640
EMERGENCY FREQ	121.500

BEARINGS, TRACKS AND RADIALS ARE MAGNETIC
ALTITUDES AND ELEVATIONS ARE IN FEET
DISTANCES ARE IN NM



TRANSITION ALTITUDE
5000



change: FREQ KARLOVY VARY ATIS from 118.955 to 127.640; ATCSMA polygons

Omnidirectional departures:

RWY 11: Climb straight ahead, minimum turn altitude is 3000ft
No turns left to north of RWY centerline below 3300ft.

RWY 29: Climb straight ahead, minimum turn altitude is 3000ft.
No turns right to north of RWY centerline below 3300ft.

MNM ASC 5% to 4500ft AMSL

