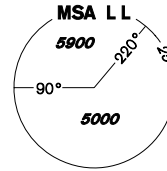
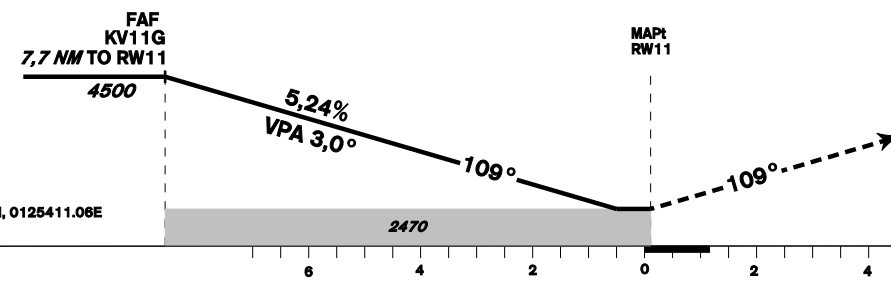
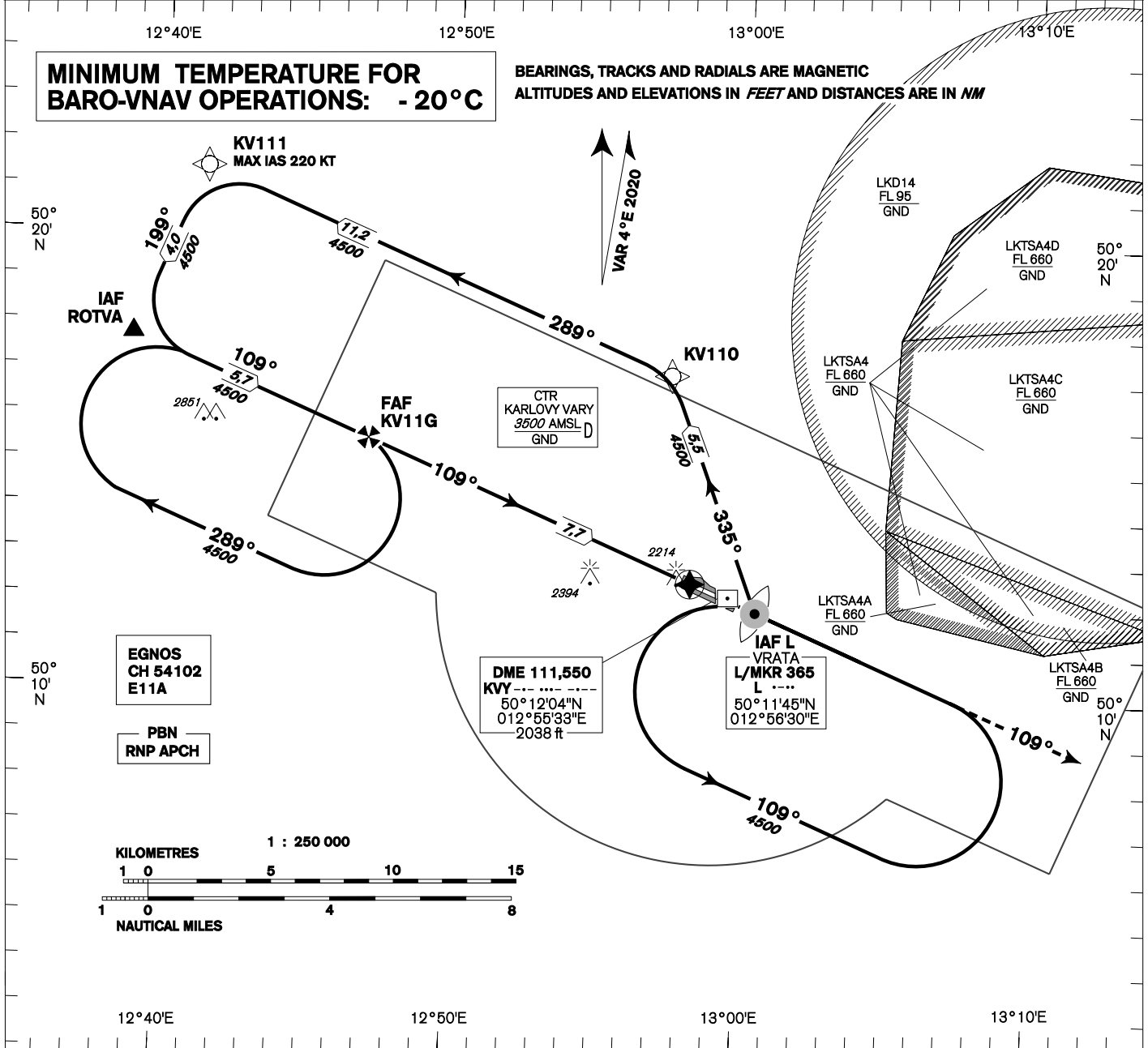


INSTRUMENT APPROACH CHART - ICAO	AERODROME ELEV 1989 THR RWY 11 ELEV 1988 OCH RELATED TO THR RWY 11	PRAHA RADAR 118,650 VARY TOWER 121,230 121,500	KARLOVY VARY RNP RWY 11
---	--	---	--------------------------------



MINIMUM TEMPERATURE FOR BARO-VNAV OPERATIONS: - 20 °C

BEARINGS, TRACKS AND RADIALS ARE MAGNETIC
ALTITUDES AND ELEVATIONS IN FEET AND DISTANCES ARE IN NM



MISSED APPROACH:
Climb on track 109° to 5000 ft AMSL, expect vectoring. In case of RCF climb on track 109° to 8.0 NM DME KVV and turn right to L L in climbing to 5000 ft AMSL.

TRANSITION ALTITUDE **5000ft** RDH **49,2**

change: coordinates of THR 11

OCA/OCH	A	B	C	D	DIST THR (MAPt)	7	6	5	4	3	2
LNAV	2470/ 480				ALTITUDES ft	4260	3940	3630	3310	2990	2670
LNAV / VNAV	2380 / 392										
LPV	2349/ 361	2361/ 373	2369/ 381	2380/ 392							
Circling (south of AD only)	2520/ 530	2520/ 530	2970/ 980	3160/ 1170							
					kt	80	100	120	140	160	180
					min:sec	5:48	4:39	3:52	3:19	2:54	2:35
					Rate of descent (5,24%)	ft/min	420	530	640	740	850

Timing is not authorised for determining the MAPt

Posloupnost traťových bodů / Way point sequence

Od / From IAF ROTVA		
ROTVA	IAF	fly-by
KV11G	FAF	fly-by
RW11	MAPt	fly-over

Od / From IAF L L		
L L	IAF	fly-by
KV110		fly-by
KV111		fly-by
ROTVA		fly-by
KV11G	FAF	fly-by
RW11	MAPt	fly-over

Seznam traťových bodů / Way point list	
ROTVA	50 17 36,71 N 012 34 55,67 E
KV110	50 16 55,30 N 012 53 27,59 E
KV111	50 21 17,57 N 012 37 21,03 E
KV11G	50 15 23,91 N 012 43 05,90 E
L L	50 11 44,84 N 012 56 30,07 E

SBAS FAS Data Block

Vstupní data / Input Data

Parametry / Parameters	Hodnoty / Values
Operation Type	0
SBAS Provider	1 (EGNOS)
Airport Identifier	LKKV
Runway	11
Runway Letter	0 (None)
Approach Performance Designator	0
Route Indicator	
Reference Path Data Selector	0
Reference Path Identifier	E11A
LTP/FTP Latitude	501222.8455N
LTP/FTP Longitude	0125411.0575E
LTP/FTP Ellipsoidal Height (metres)	651.8
FPAP Latitude	501157.3265N
Delta FPAP Latitude (seconds)	-25.5190
FPAP Longitude	0125544.3045E
Delta FPAP Longitude (seconds)	93.2470
Threshold Crossing Height	49.2
TCH Units Selector	0 (feet)
Glidepath Angle (degrees)	3.00
Course Width (metres)	105.00
Length Offset (metres)	0
HAL (metres)	40.0
VAL (metres)	50.0

Výstupní data / Output Data

Parametry / Parameters	Hodnoty / Values
Data Block	10 16 0B 0B 0C 0B 00 00 01 31 31 05 7B D5 8B 15 E3 92 89 05 76 2D A2 38 FF 7E D8 02 EC 01 2C 01 64 00 C8 FA A8 B0 CD 96
Calculated CRC Value	A8B0CD96

Required Additional Data (not CRC wrapped)

These additional data are not required for CRC calculation, but they need to be provided to datahouses for procedure coding in ARINC 424 records

Parametry / Parameters	Hodnoty / Values
ICAO Code	LK
LTP/FTP Orthometric Height (metres)	605.8