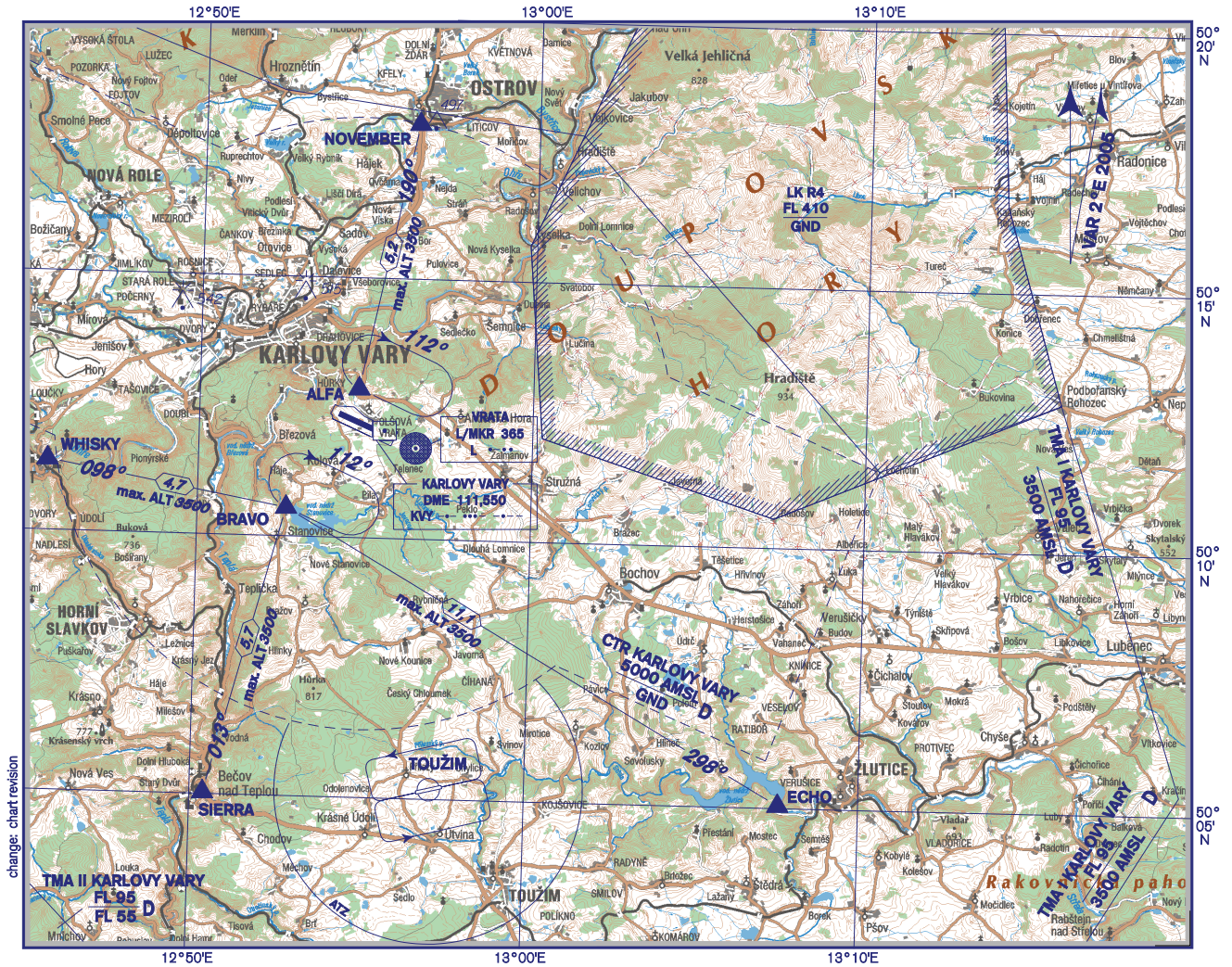


AD ELEV 1989 ft / 606 m

VFR Arrivals and Departures Chart KARLOVY VARY

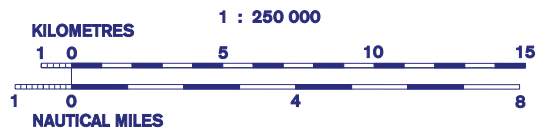
BEARINGS ARE MAGNETIC
ALTITUDES ARE IN
FEET/METRES
ELEVATIONS ARE IN METRES
DISTANCES ARE IN NM

| | | | |
|-----------------------------|---------|-------------------|---------|
| KARLOVY VARY ATIS | 118,950 | KARLOVY VARY INFO | 121,225 |
| KARLOVY VARY APPROACH/RADAR | 119,950 | TOUŽIM INFO | 122,600 |
| KARLOVY VARY TOWER | 121,225 | | |
| SUPPLEMENTARY FREQ. | 122,900 | | |
| | 121,500 | | |



change: chart revision

| | | | |
|-------|-------------|----------|-------------|
| ALFA | 50 12 52 N | NOVEMBER | 50 17 59 N |
| | 012 54 46 E | | 012 56 24 E |
| BRAVO | 50 10 33 N | SIERRA | 50 05 02 N |
| | 012 52 40 E | | 012 50 24 E |
| ECHO | 50 05 03 N | WHISKY | 50 11 22 N |
| | 013 07 36 E | | 012 45 29 E |



| Arrivals | Waypoint sequence |
|-------------------|--------------------------|
| NOVEMBER 1 | NOVEMBER - ALFA |
| ECHO 1 | ECHO - BRAVO |
| SIERRA 1 | SIERRA - BRAVO |
| WHISKY 1 | WHISKY - BRAVO |
| Departures | |
| NOVEMBER 1 | ALFA - NOVEMBER |
| ECHO 1 | BRAVO - ECHO |
| SIERRA 1 | BRAVO - SIERRA |
| WHISKY 1 | BRAVO - WHISKY |