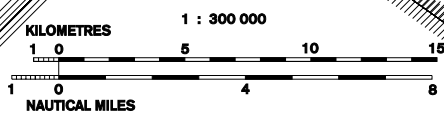
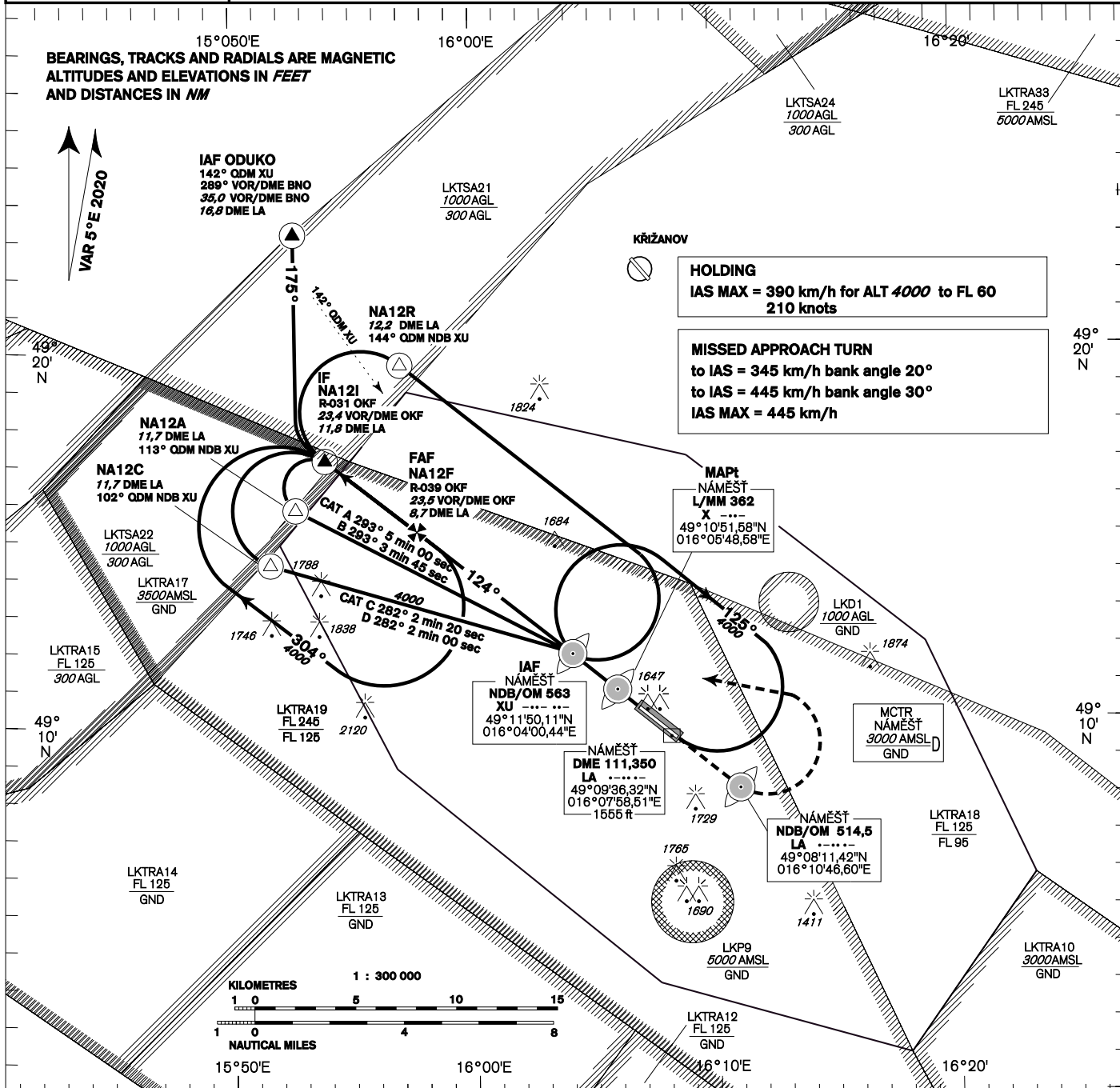
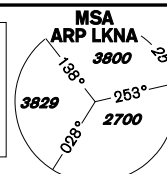


<b>INSTRUMENT APPROACH CHART - ICAO</b>	AERODROME ELEV <b>1547</b>	<b>NÁMEŠŤ RADAR</b>  <b>PRECISION</b> <b>TOWER</b>	118,155	266,200 reserve	<b>NÁMEŠŤ NDB RWY 12</b>
	THR RWY 12 ELEV <b>1547</b>		283,900	123,300 reserve	
	THR RWY 30 ELEV <b>1496</b>		126,505	121,180 reserve	
OCH RELATED TO THR RWY 12					



<p><b>R-039 VOR/DME OKF</b> 23,5 VOR/DME OKF 8,7 DME LA FAF</p> <p><b>TRANSITION ALTITUDE</b> 5000ft</p> <p>THR 491022.96N 0160641.95E ELEV 1547 DISTANCE IN NM FROM THR RWY 12</p>		<p><b>MISSED APPROACH:</b> Proceed to NDB LA in climbing 4000ft passing NDB turn left to NDB XU</p> <p>In the case of RCF on final approach track without landing clearance follow the missed approach procedure</p>
---	--	--

<b>OCA/OCH</b>		<b>A</b>	<b>B</b>	<b>C</b>	<b>D</b>					
<b>Straight-in Approach</b>	<b>NDB</b>	ft	1857 / 308							
	<b>PAR</b>	ft	1857 / 308							
<b>Circling (NORTH ONLY)</b>		ft	1936	1988	2086	2185				

<b>FAF - MAPt 6,9 NM</b>	kt	81	100	122	141	162	184
<b>Rate of descent</b>	km/h	150	185	225	260	300	340
	min:sec	5:05	4:07	3:23	2:56	2:32	2:14
	m / s	2,2	2,7	3,3	3,8	4,4	5,0
	ft / min	433	532	650	748	866	984

Timing is not authorized for defining the MAPt.

Seznam traťových bodů / Way point list		
XU (NDB)	49 11 50 N	016 04 00 E
X (L)	49 10 52 N	016 05 49 E
NA12A	49 15 44 N	015 52 45 E
NA12C	49 14 16 N	015 51 42 E
NA12R	49 19 36 N	015 57 04 E
NA12I	49 17 03 N	015 53 58 E
NA12F	49 15 08 N	015 57 42 E
LA (NDB)	49 08 12 N	016 10 47 E