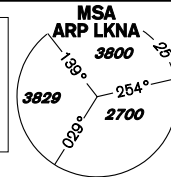


INSTRUMENT APPROACH CHART - ICAO

AERODROME ELEV **1547**
THR RWY 13 ELEV **1547**
THR RWY 31 ELEV **1496**
OCH RELATED TO THR RWY 13

NÁMEŠŤ APPROACH/ 118,155 266,200 O/R
RADAR
PRECISION 283,900 123,300 reserve
TOWER 126,505 119,830 reserve



NÁMEŠŤ NDB RWY 13

BEARINGS, TRACKS AND RADIALS ARE MAGNETIC
ALTITUDES AND ELEVATIONS IN FEET
AND DISTANCES IN NM

VAR 4° E 2017

IAF ODUKO
143° ODM XU
289° VOR/DME BNO
35,0 VOR/DME BNO
16,8 DME LA

LKTSA21
1000AGL
300 AGL

LKTSA24
1000AGL
300 AGL

LKTRA33
FL 245
5000 AMSL

KŘIŽANOV

HOLDING
IAS MAX = 390 km/h for ALT 4000 to FL 60

MISSED APPROACH TURN
to IAS = 345 km/h bank angle 20°
to IAS = 445 km/h bank angle 30°
IAS MAX = 445 km/h

IF R-032 OKF
23,4 VOR/DME OKF
11,8 DME LA

LKTRA18
FL 125
FL 95

FAF R-040 OKF
23,5 VOR/DME OKF
8,7 DME LA

LKTRA17
1000AGL
GND

LKTSA22
1000AGL
300 AGL

LKTRA15
FL 125
300 AGL

CAT
A 294° 5 min 00 sec
B 294° 3 min 45 sec
C 283° 2 min 20 sec
D 283° 2 min 00 sec

MAPt NÁMEŠŤ
L/MM 382
X ----
49°10'51,58"N
016°05'48,58"E

IAF NÁMEŠŤ
NDB/OM 563
XU ----
49°11'50,11"N
016°04'00,44"E

NÁMEŠŤ
DME 111,350
LA ----
49°09'36,03"N
016°07'59,97"E
1546 ft

MCTR NÁMEŠŤ
5000 AMSL D
GND

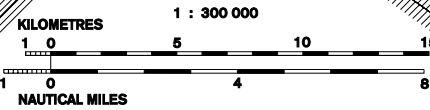
LKTRA14
FL 125
GND

LKTRA13
FL 125
GND

1762
1690

LKP9
5000 AMSL
GND

LKTRA10
1000AGL
GND



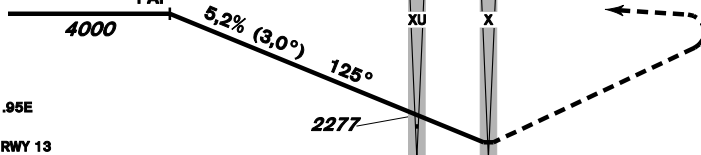
R-040 VOR/DME OKF
23,5 VOR/DME OKF
8,7 DME LA
FAF

IAF NDB OM 563
3,45 DME LA
MAPt L MM 382
1,97 DME LA

MISSED APPROACH:
Climb to 2500ft
turn left to NDB XU
climbing to 4000ft

TRANSITION ALTITUDE
5000ft

THR 491022.96N 0160641.95E
ELEV 1547
DISTANCE IN NM FROM THR RWY 13



OCA/OCH		A	B	C	D
Straight-in Approach	NDB ft		1857 / 308		
	PAR ft		1857 / 308		
Circling (NORTH ONLY)		1936	1988	2086	2185

	km/h	150	185	225	260	300	340
FAF - MAPt 6,9 NM	min:sec	5:00	4:04	3:20	2:53	2:30	2:13
Rate of descent	m / s	2,2	2,7	3,3	3,8	4,4	5,0

Timing is not authorized for defining the MAPt.