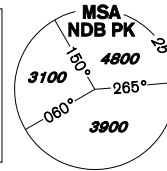


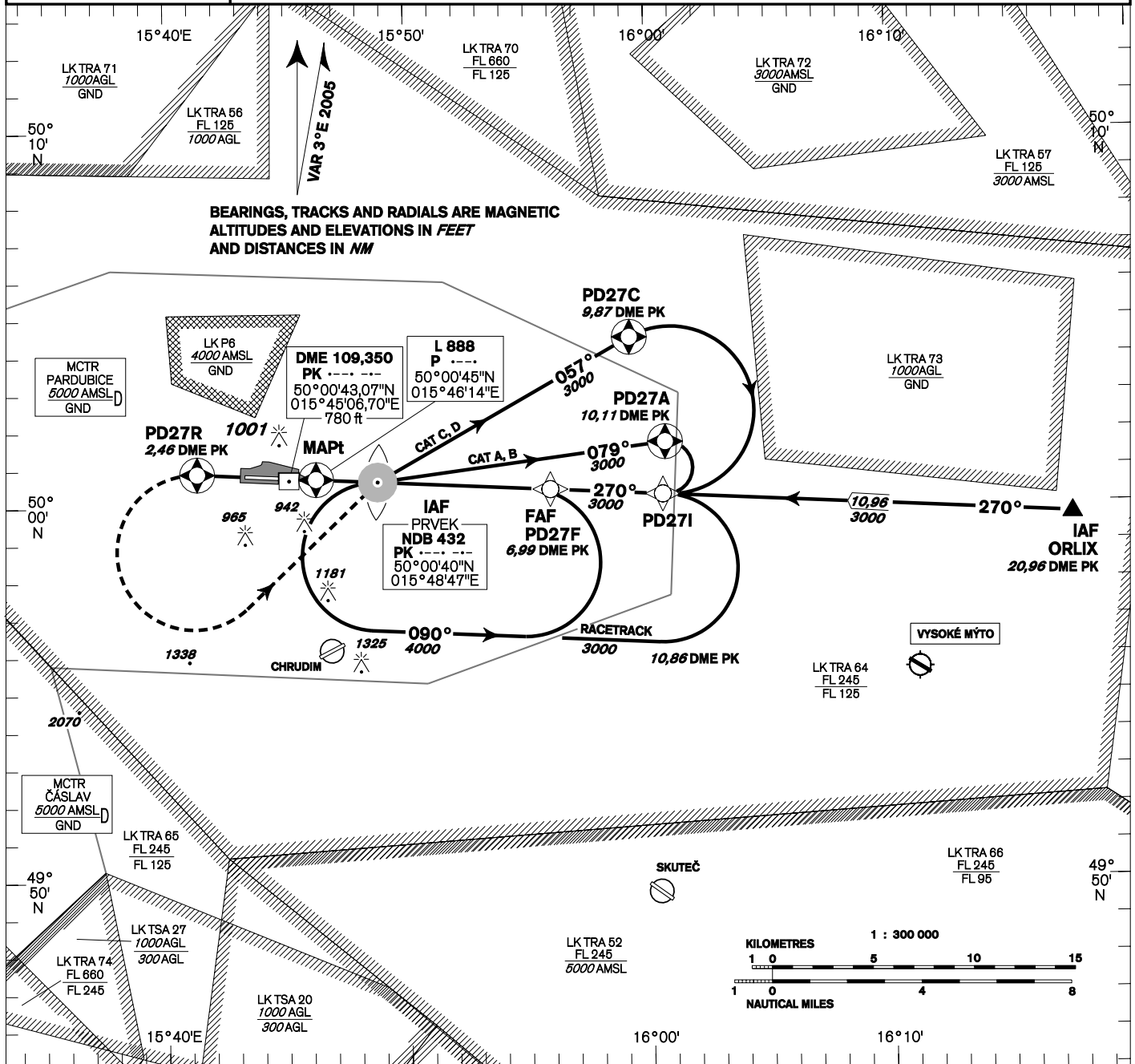
INSTRUMENT APPROACH CHART - ICAO

AERODROME ELEV 741 - 27 hPa
THR RWY 27 ELEV 732 - 27 hPa
OCH RELATED TO THR RWY 27

PARDUBICE
MTWR 120,150
MTWR (reserve) 120,200
MAPP 127,650
267,300 O/R



PARDUBICE NDB - DME(GPS) RWY 27

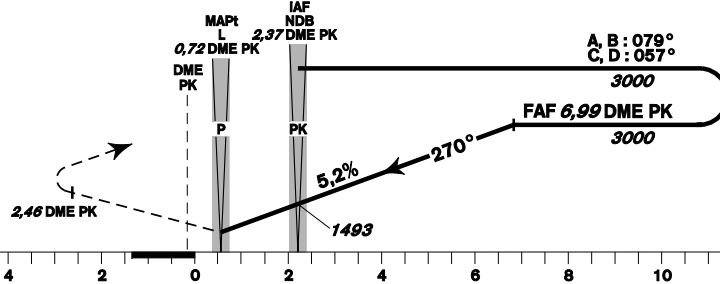


MISSED APPROACH:

Climb to 2,46 DME PK,
turn left to NDB PK
in climbing to 3500

MAX IAS = 186 kt
bank angle 15°

THR 500046.50N, 0154521.56E
ELEV 732 - 27 hPa



TRANSITION ALTITUDE
5000ft

OCA/OCH	A	B	C	D	
Straight-in Approach	ft	1170 / 438			
	m	360 / 137			
NDB PK (2,37 DME PK) not received	ft	1493 / 761			
	m	455 / 232			
Circling South of AD Only!	ft	1230 L / -	1266 L / -	1647 L / -	1733 L / -
	m	375 L / -	386 L / -	502 L / -	528 L / -

DME PK NM	7	6	5	4	3	2	1
ALTITUDES ft	3010	2680	2350	2020	1700	1370	1050
	kt	80	100	120	140	160	180
FAF - MAPt 6,27 NM	min:sec	4:42	3:46	3:08	2:41	2:21	2:05
Rate of descent	ft/min	430	540	650	760	870	970

Timing is not authorized for defining the MAPt.



Seznam traťových bodů / Way point list	
PK (NDB)	50 00 39,93 N 015 48 46,87 E
P (L)	50 00 44,90 N 015 46 13,82 E
ORLIX	49 59 41,85 N 016 17 33,80 E
PD27A	50 01 40,74 N 016 00 42,71 E
PD27C	50 04 28,62 N 015 59 15,96 E
PD27I	50 00 17,04 N 016 00 35,92 E
PD27F	50 00 26,27 N 015 55 56,11 E
PD27R	50 00 54,02 N 015 41 18,11 E

Posloupnost traťových bodů / Way point sequence		
Od IAWP PD27E/From IAWP PD27E		
ORLIX	IAWP	fly-by
PD27I	IWP	fly-by
PD27F	FAWP	fly-by
P (L)	MAWP	fly-over
PD27R		fly-over
PK (NDB)	MAHWP	fly-by

Posloupnost traťových bodů / Way point sequence		
Od IAF PK/From IAF PK		
PK (NDB)	IAWP	fly-by
cat A,B: PD27A cat C,D: PD27C		fly-over
PD27I	IWP	fly-by
PD27F	FAWP	fly-by
P (L)	MAWP	fly-over
PD27R		fly-over
PK (NDB)	MAHWP	fly-by