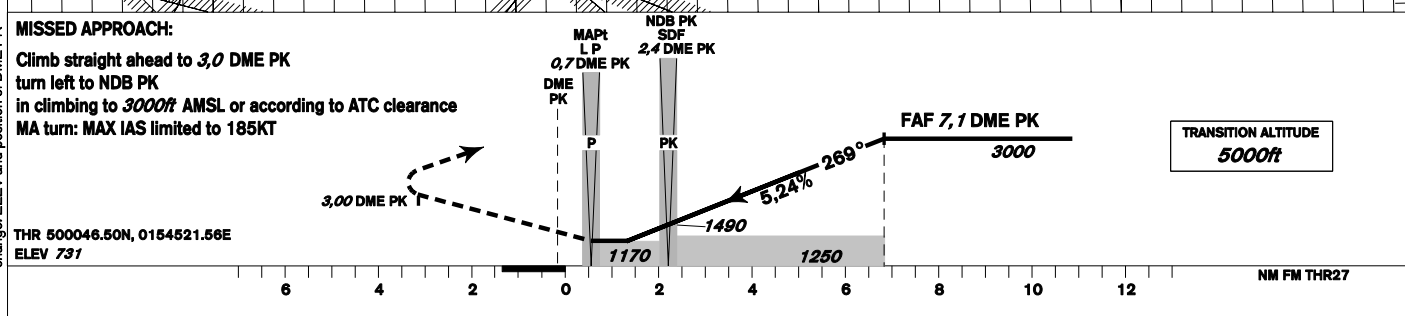
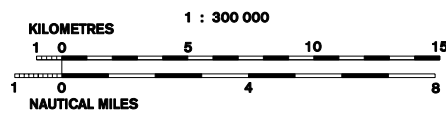
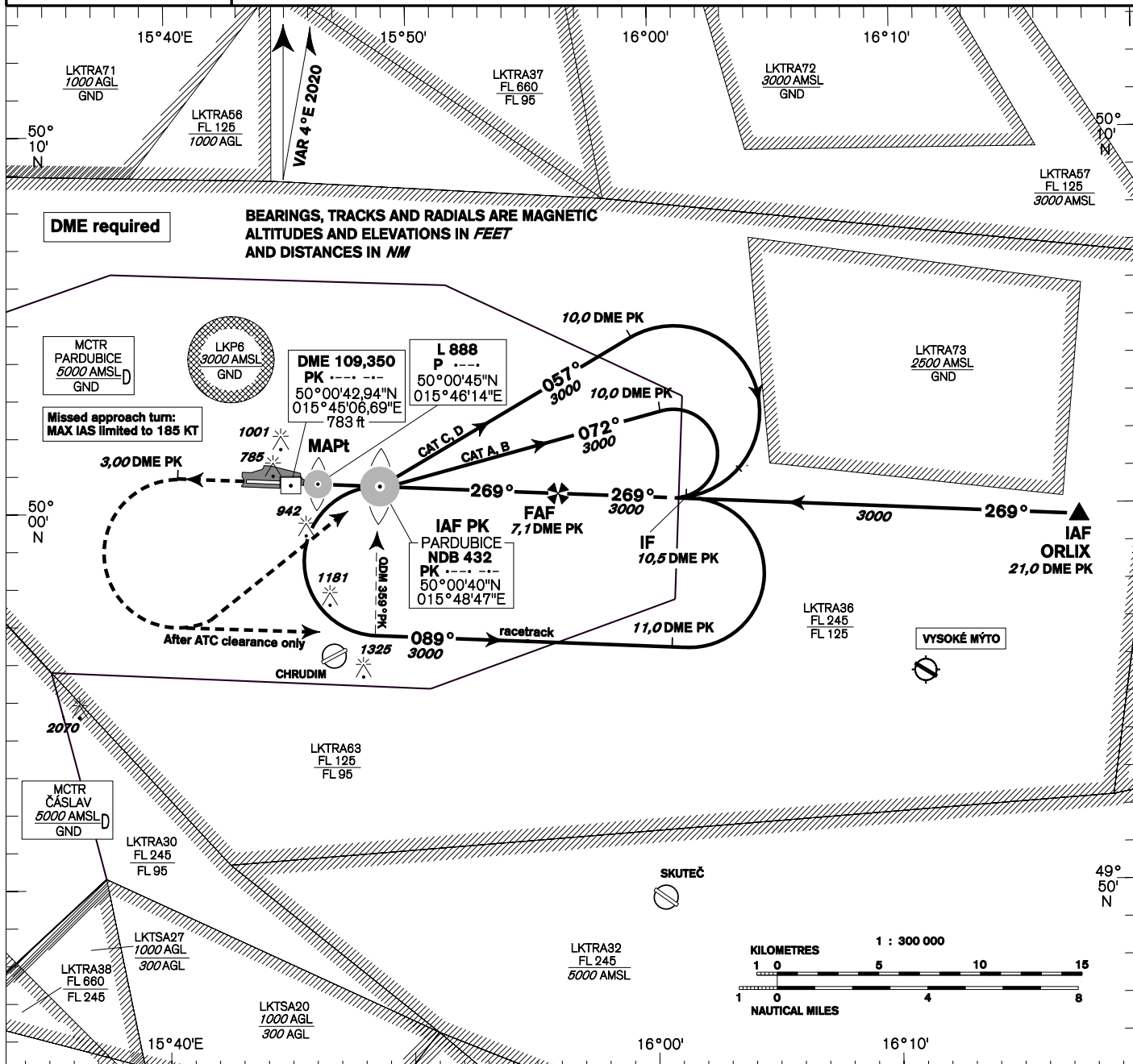
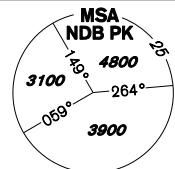


INSTRUMENT APPROACH CHART - ICAO	AERODROME ELEV 741 THR RWY 27 ELEV 731 OCH RELATED TO THR RWY 27	PARDUBICE RADAR 128,365 267,300 O/R PRECISION 296,825 123,300 reserve TOWER 120,155 120,205 reserve	PARDUBICE NDB <div style="border: 1px solid black; padding: 2px; display: inline-block;">RWY 27</div>
---	---	--	--



OCA/OCH		A	B	C	D
Straight-in Approach	ft	1170/440			
Circling (south of AD only)	ft	1240/510	1430/700	1580/850	1730/1010

DME PK NM		7	6	5	4	3	2	1
ALTITUDES ft		2960	2640	2330	2010	1690	1370	1050
	kt	80	100	120	140	160	180	
FAF - MAPt 6,4 NM	min:sec	4:46	3:46	3:12	2:45	2:24	2:08	
Rate of descent	ft/min	430	540	650	750	860	970	

Timing is not authorized for defining the MAPt.