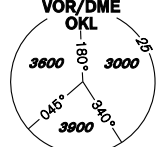
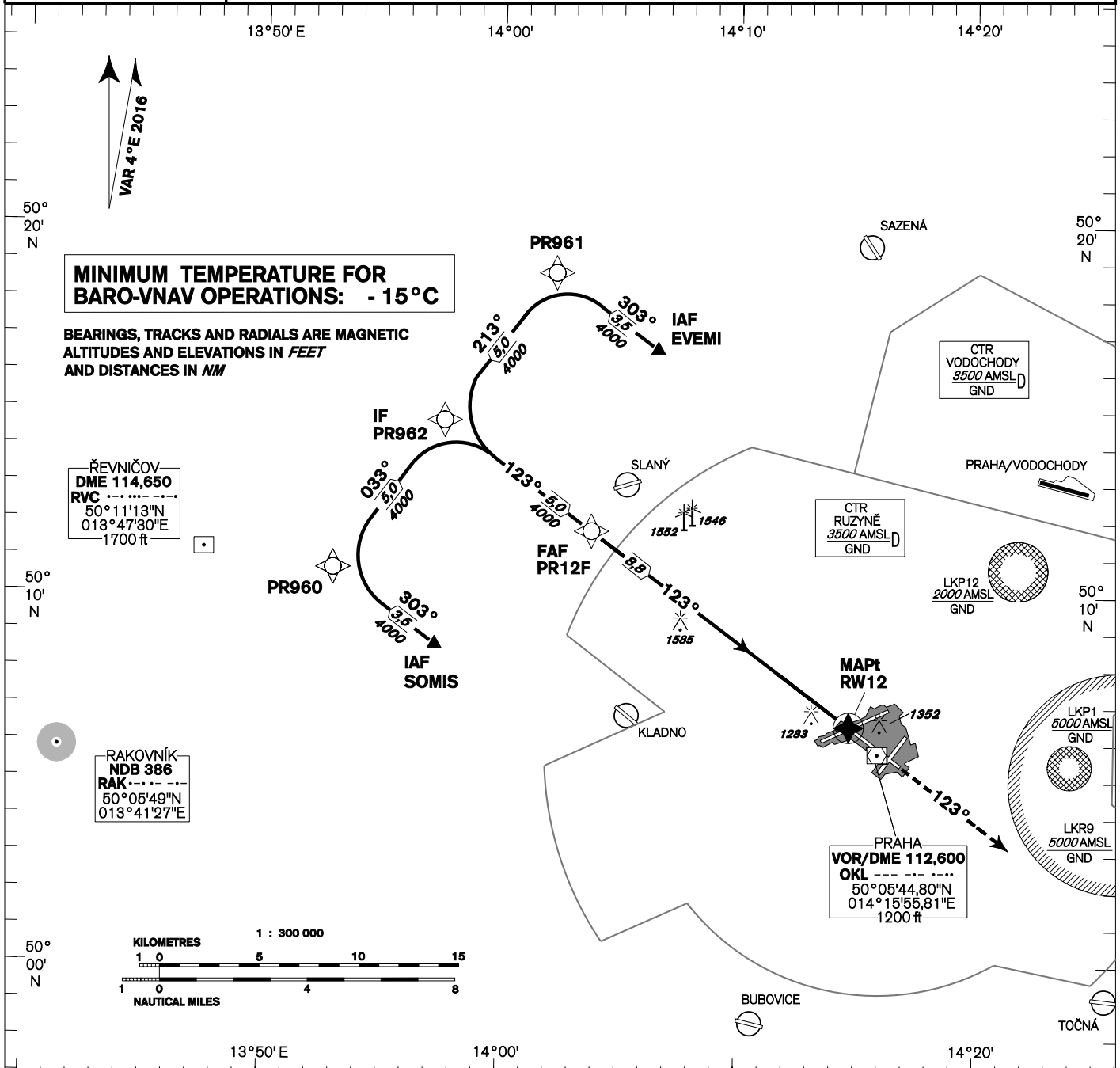


<b>INSTRUMENT APPROACH CHART - ICAO</b>	<b>AERODROME ELEV 1234</b> <b>THR RWY 12 ELEV 1160</b>  <b>OCH RELATED TO THR RWY 12</b>	<b>PRAHA RADAR 127,580</b> <b>RUZYŇŔ RADAR 119,010</b> <b>SUPPLEMENTARY FREQ. 136,080</b> <b>121,500</b> <b>RUZYŇŔ TOWER 118,110</b> <b>SUPPLEMENTARY FREQ. 134,560</b> <b>121,500</b>	<div style="text-align: center;"> <b>MSA</b>  <b>VOR/DME</b>  <b>OKL</b>   </div> <div style="text-align: right; font-size: 1.2em; font-weight: bold;"> <b>PRAHA/Ruzyňř</b>  <b>RNAV (GNSS)</b>  <div style="border: 1px solid black; padding: 2px; display: inline-block; font-weight: bold;"> <b>RWY 12</b> </div> </div>
---	---	--	--

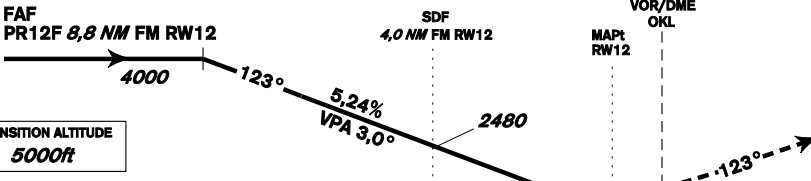
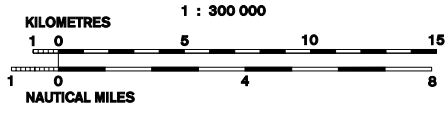


**MINIMUM TEMPERATURE FOR  
BARO-VNAV OPERATIONS: -15°C**

BEARINGS, TRACKS AND RADIALS ARE MAGNETIC  
ALTITUDES AND ELEVATIONS IN FEET  
AND DISTANCES IN NM

ŘEVNIČOV  
DME 114,650  
RVC  
50°11'13"N  
013°47'30"E  
1700 ft

RAKOVNÍK  
NDB 386  
RAK  
50°05'49"N  
013°41'27"E



**MISSED APPROACH:**  
Climb on track 123° to 4000ft, radar vectoring will be provided.  
In case of RCF climb on track 123° to 4000ft, at 10NM DME OKL turn right to OKL and climb to 5000ft.

change: lateral limits of CTR RUZYŇŔ

THR 500628,84N 0141443,32E ELEV 1160	1830 1530	RDH 49,2 ft
---	--------------	-------------

OCA/OCH	A	B	C	D
LNAV	1530 / 370			
LNAV / VNAV	1453 / 293			
Circling	see the circling approach chart			

DIST THR (MAPt) NM	10	9	8	7	6	5	4	3	2	1
ALTITUDES ft	4390	4070	3780	3440	3120	2800	2480	2160	1850	1530

FAF - MAPt 8,8 NM	kt	80	100	120	140	160	180
	min:sec	6:34	5:16	4:23	3:45	3:17	2:55
Rate of descent	ft/min	420	530	640	740	850	960

Timing is not authorized for defining the MAPt.

Seznam traťových bodů / Way point list	
SOMIS	50 08 38,56 N 013 57 15,18 E
EVEMI	50 16 38,86 N 014 06 33,88 E
PR960	50 10 41,95 N 013 52 57,01 E
PR961	50 18 42,62 N 014 02 15,30 E
PR962	50 14 42,39 N 013 57 35,78 E
PR12F	50 11 44,17 N 014 03 49,30 E
RW12	50 06 28,84 N 014 14 43,32 E

Posloupnost traťových bodů / Way point sequence Od/from IAF SOMIS		
SOMIS	IAF	fly-by
PR960		fly-by
PR962	IF	fly-by
PR12F	FAF	fly-by
RW12	MAPt	fly-over

Posloupnost traťových bodů / Way point sequence Od/from IAF EVEMI		
EVEMI	IAF	fly-by
PR961		fly-by
PR962	IF	fly-by
PR12F	FAF	fly-by
RW12	MAPt	fly-over

