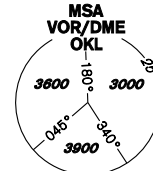


INSTRUMENT APPROACH CHART - ICAO

AERODROME ELEV **1234**
THR RWY 24 ELEV **1158**
OCH RELATED TO THR RWY 24

PRAHA RADAR 127,580
RUZYŇNÉ RADAR 119,010
SUPPLEMENTARY FREQ 136,080
121,500
118,110

RUZYŇNÉ TOWER 118,110
SUPPLEMENTARY FREQ 134,560
121,500

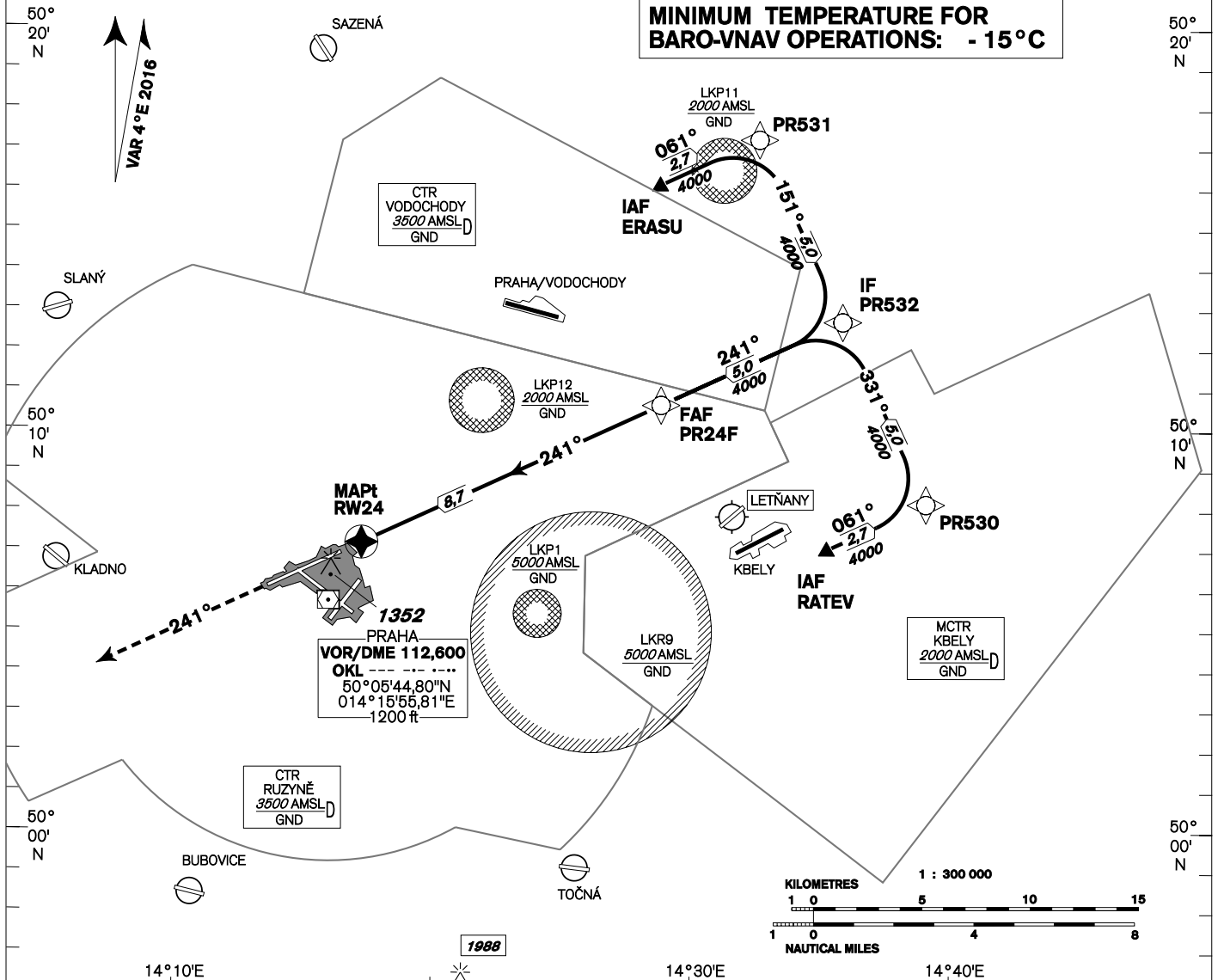


PRAHA/Ruzyňě RNAV (GNSS) RWY 24

BEARINGS, TRACKS AND RADIALS ARE MAGNETIC
ALTITUDES AND ELEVATIONS IN FEET AND DISTANCES NM

MINIMUM TEMPERATURE FOR
BARO-VNAV OPERATIONS: **-15 °C**

NERATOVICE
VOR/DME 112,250
NER ---
50°22'00"N
014°37'17"E
1000 ft



MISSED APPROACH:

Climb on track 241° to 4000ft, radar vectoring will be provided.
In case of RCF climb on track 241° to 4000ft, at 10NM DME OKL turn right to OKL and climb to 5000ft.

THR 500657.42N, 0141624.12E
ELEV 1158

TRANSITION ALTITUDE
5000ft

RDH **49.2 ft**

change: lateral limits of CTR RUZYŇNÉ

| | | | | | |
|-------------|---------------------------------|------------|---|---|---|
| OCA/OCH | | A | B | C | D |
| LNAV | ft | 1570 / 410 | | | |
| LNAV / VNAV | ft | 1479 / 321 | | | |
| Circling | see the circling approach chart | | | | |

| | | | | | | | | | |
|--------------------|------|------|------|------|------|------|------|------|------|
| DIST THR (MAPt) NM | 9 | 8 | 7 | 6 | 5 | 4 | 3 | 2 | 1 |
| ALTITUDES ft | 4070 | 3750 | 3440 | 3120 | 2800 | 2480 | 2160 | 1840 | 1530 |

| | | | | | | | |
|-------------------------|---------|------|------|------|------|------|------|
| | kt | 80 | 100 | 120 | 140 | 160 | 180 |
| FAF - MAPt 8,7 NM | min:sec | 6:34 | 5:15 | 4:23 | 3:45 | 3:17 | 2:55 |
| Rate of descent (5,24%) | ft/min | 420 | 530 | 640 | 740 | 850 | 960 |

Timing is not authorized for defining the MAPt.

| Seznam traťových bodů / Way point list | |
|--|------------------------------|
| ERASU | 50 16 07,51 N 014 28 41,31 E |
| RATEV | 50 07 03,32N 014 35 12,65 E |
| PR530 | 50 08 11,56 N 014 39 03,31 E |
| PR531 | 50 17 15,97 N 014 32 32,54 E |
| PR532 | 50 12 43,82 N 014 35 48,23 E |
| PR24F | 50 10 38,79 N 014 28 46,27 E |
| RW24 | 50 06 57,42 N 014 16 24,12 E |

| Posloupnost traťových bodů / Way point sequence Od/from IAF ERASU | | |
|--|------|----------|
| ERASU | IAF | fly-by |
| PR531 | | fly-by |
| PR532 | IF | fly-by |
| PR24F | FAF | fly-by |
| RW24 | MAPt | fly-over |

| Posloupnost traťových bodů / Way point sequence Od/from IAF RATEV | | |
|--|------|----------|
| RATEV | IAF | fly-by |
| PR530 | | fly-by |
| PR532 | IF | fly-by |
| PR24F | FAF | fly-by |
| RW24 | MAPt | fly-over |

