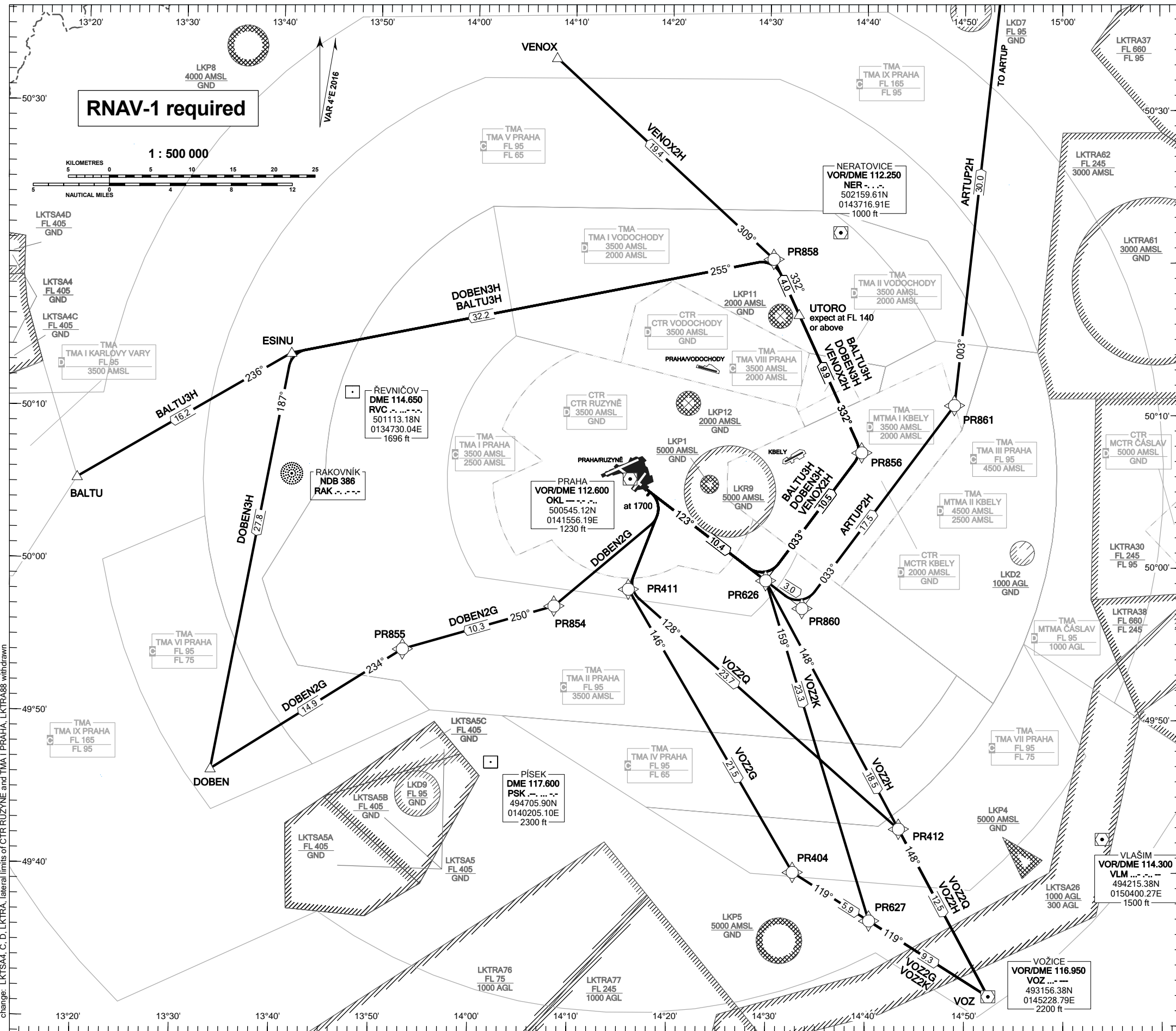


**RNAV STANDARD DEPARTURE CHART -  
INSTRUMENT (SID) - ICAO**

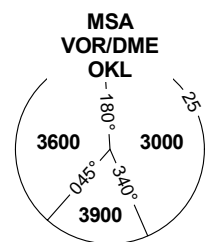
**PRAHA/RUZYŇĚ  
RNAV SID RWY 12**



**VOZ 2Q**  
Only for propeller driven aircraft between 0500 - 2100 (0400 - 2000) UTC when RWY 24 is in use.

**VOZ 2K**  
Only for propeller driven aircraft between 0500 - 2100 (0400 - 2000) UTC when RWY 06 is in use.

PRAHA RADAR	120.530
RUZYŇĚ RADAR	127.580
SUPPLEMENTARY FREQ APP	118.310
RUZYŇĚ DELIVERY	119.010
SUPPLEMENTARY FREQ TWR	136.080
RUZYŇĚ TOWER	120.060
SUPPLEMENTARY FREQ GND	118.110
RUZYŇĚ GROUND	134.560
RUZYŇĚ ATIS	121.910
EMERGENCY FREQ	122.160
	121.500



TRANSITION ALTITUDE  
5000

DEPARTURE SPEED LIMIT  
BELOW FL 100

JETS	MAX IAS 250 KT
PROPS	MAX IAS 180 KT

see AD 2-LKPR 2.22.3.3.6

BEARINGS, TRACKS AND  
RADIALS ARE MAGNETIC  
ALTITUDES AND ELEVATIONS  
ARE IN FEET  
DISTANCES ARE IN NM