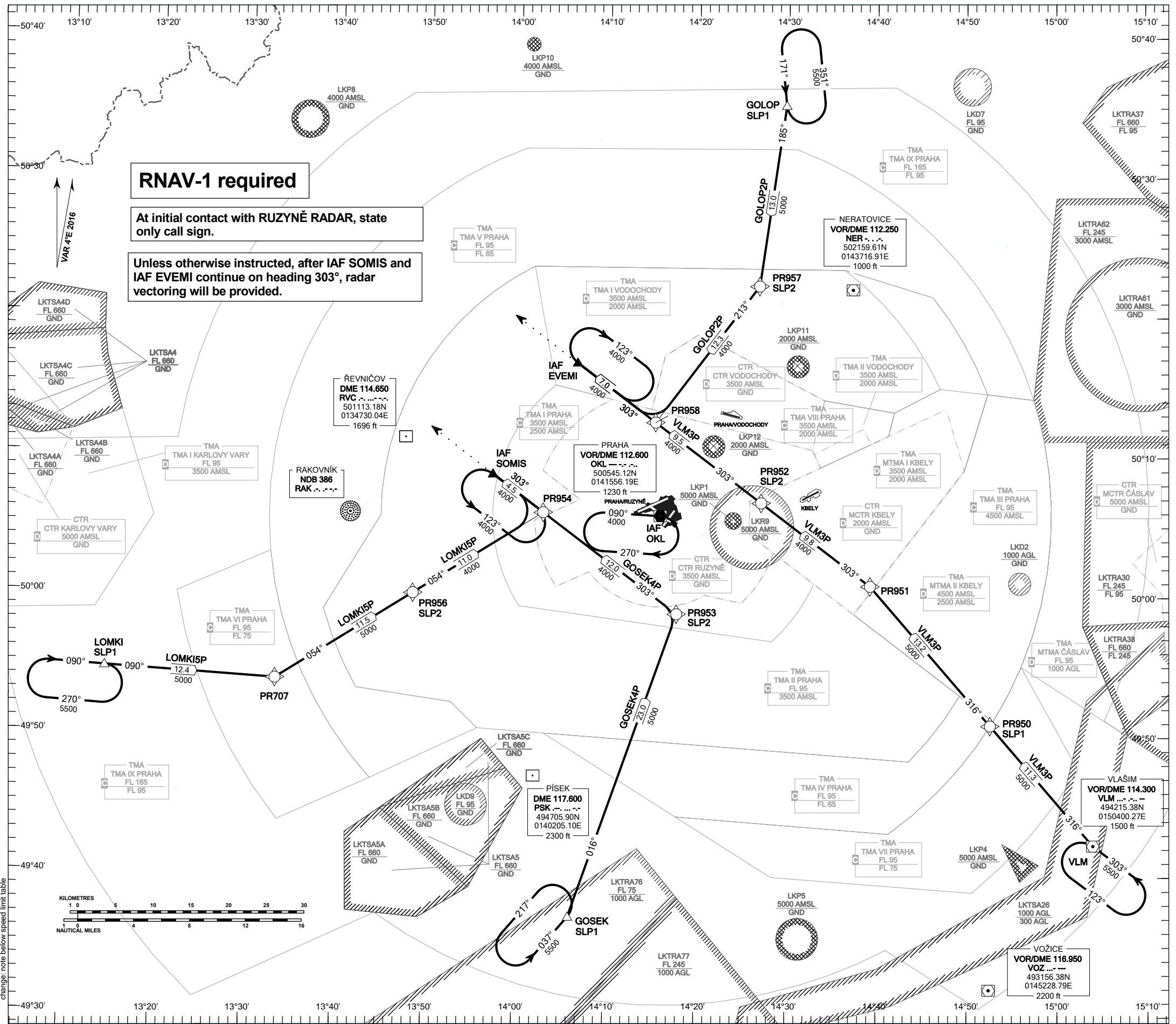


**RNAV STANDARD ARRIVAL CHART - INSTRUMENT
(STAR) - ICAO**

**PRAHA/RUZYŇĚ
RNAV STAR RWY 12**

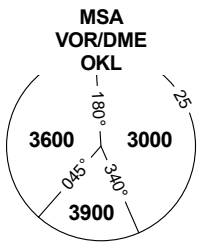


RNAV-1 required

At initial contact with RUZYŇĚ RADAR, state only call sign.

Unless otherwise instructed, after IAF SOMIS and IAF EVEMI continue on heading 303°, radar vectoring will be provided.

| | |
|----------------------------|---------|
| PRAHA APPROACH / RADAR | 120.530 |
| RUZYŇĚ APPROACH / RADAR | 127.580 |
| RUZYŇĚ RADAR / INFORMATION | 118.310 |
| SUPPLEMENTARY FREQ APP | 136.080 |
| RUZYŇĚ DELIVERY | 120.060 |
| RUZYŇĚ TOWER | 118.110 |
| SUPPLEMENTARY FREQ TWR | 134.560 |
| RUZYŇĚ GROUND | 121.910 |
| RUZYŇĚ ATIS | 122.160 |
| EMERGENCY FREQ | 121.500 |



TRANSITION ALTITUDE
5000

| | |
|----------------------|----------------|
| SPEED LIMITING POINT | |
| SLP1 | MAX IAS 250 KT |
| SLP2 | MAX IAS 220 KT |

BEARINGS, TRACKS AND RADIALS ARE MAGNETIC
ALTITUDES AND ELEVATIONS ARE IN FEET
DISTANCES ARE IN NM

see AIP AD 2-LKPR-30, 2.22.4.2.1.