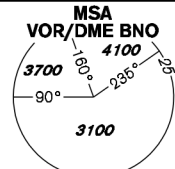
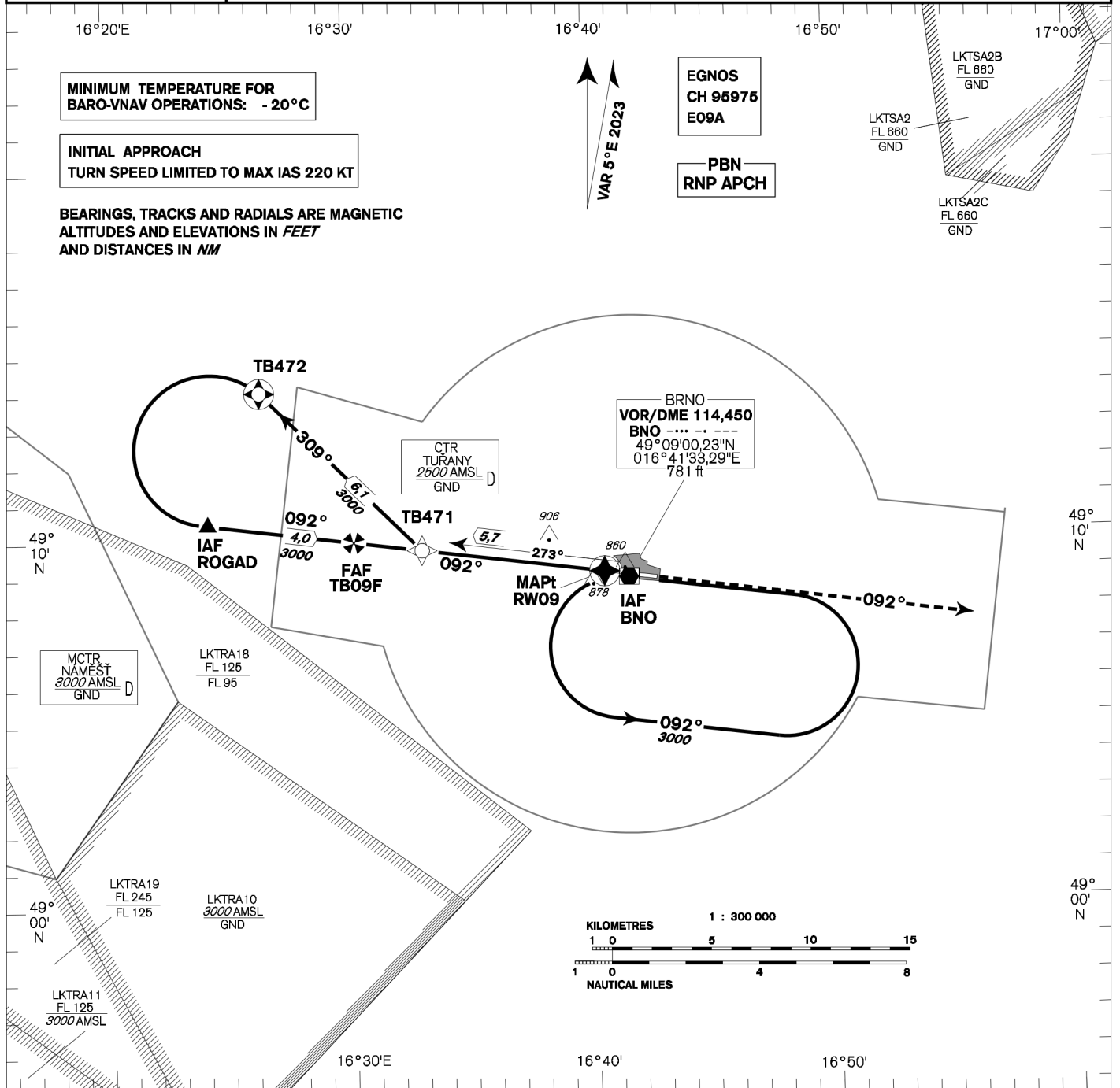


INSTRUMENT APPROACH CHART - ICAO	AERODROME ELEV 778 THR RWY 09 ELEV 764 OCH RELATED TO THR RWY 09	TUŘANY/TOWER 119,605 125,430 121,500 PRAHA RADAR 127,350 121,500	BRNO/Tuřany RNP RWY 09 
---	--	--	--



FAF TB09F 6,9NM to RW09 3000

TRANSITION ALTITUDE 5000ft

TCH 50

THR 490910.34N 0164033.13E
ELEV 764

NM FM THR09

OCA/OCH	A	B	C	D
LNAV ft		1130/360		
LNAV/VNAV ft		1040/276		
LPV ft	1014/250	1014/250	1014/250	1014/250
Circling (South of AD Only) ft	1210/-	1440/-	1560/-	1740/-

MISSED APPROACH:
Climb on track 092° to 4000 ft AMSL, expect vectoring. In case of RCF climb on track 092° to 8,0 NM DME BNO and turn right to VOR/DME BNO in climbing to 4000 ft AMSL.

DIST THR NM	6	5	4	3	2	1
ALTITUDES ft	2720	2410	2090	1770	1450	1130

	kt	80	100	120	140	160	180
FAF - MAPt 6,9 NM	min:sec	5:09	4:07	3:26	2:57	2:35	2:17
	Rate of descent ft/min	420	530	640	740	850	960

Timing is not authorized for defining the MAPt.

Change: MAG Tracks; OCA/OCH table; Missed Approach; Channel Number; year of VAR

Posloupnost traťových bodů / Waypoint sequence

Od / From IAF ROGAD		
ROGAD	IF/IAF	fly-by
TB09F	FAF	fly-by
RW09	MAPt	fly-over

Od / From IAF VOR/DME BNO		
VOR/DME BNO	IAF	fly-by
TB471		fly-by
TB472		fly-over
ROGAD	IF	fly-by
TB09F	FAF	fly-by
RW09	MAPt	fly-over

Seznam traťových bodů / Way point list		
ROGAD	49 10 34,18 N	016 24 08,14 E
VOR/DME BNO	49 09 00,23 N	016 41 33,29 E
TB471	49 09 49,20 N	016 33 00,04 E
TB472	49 14 09,35 N	016 26 20,84 E
TB09F	49 10 03,58 N	016 30 10,89 E
RW09	49 09 10,34 N	016 40 33,13 E

SBAS FAS Data Block

Vstupní data / Input Data

Parametry / Parameters	Hodnoty / Values
Operation Type	0
SBAS Provider	1
Airport Identifier	LKTB
Runway	09
Runway Direction	0
Approach Performance Designator	0
Route Indicator	
Reference Path Data Selector	0
Reference Path Identifier	E09A
LTP/FTP Latitude	490910.3400N
LTP/FTP Longitude	0164033.1300E
LTP/FTP Ellipsoidal Height (metres)	278.0
FPAP Latitude	490859.1200N
Delta FPAP Latitude (seconds)	-11.2200
FPAP Longitude	0164242.8300E
Delta FPAP Longitude (seconds)	129.7000
Threshold Crossing Height	50
TCH Units Selector	0
Glidepath Angle (degrees)	3.00
Course Width (metres)	105.00
Length Offset (metres)	0
HAL (metres)	40.0
VAL (metres)	35.0

Výstupní data / Output Data

Parametry / Parameters	Hodnoty / Values
Data Block	10 02 14 0B 0C 09 00 00 01 39 30 05 88 18 18 15 D4 10 28 07 DC 1E 58 A8 FF 48 F5 03 F4 01 2C 01 64 00 C8 AF F8 E7 B0 18
Calculated CRC Value	F8E7B018

Required Additional Data (not CRC wrapped)

These additional data are not required for CRC calculation, but they need to be provided to datahouses for procedure coding in ARINC 424 records.

Parametry / Parameters	Hodnoty / Values
ICAO Code	LK
LTP/FTP Orthometric Height (metres)	233.0
FPAP Orthometric Height (metres)	234.9