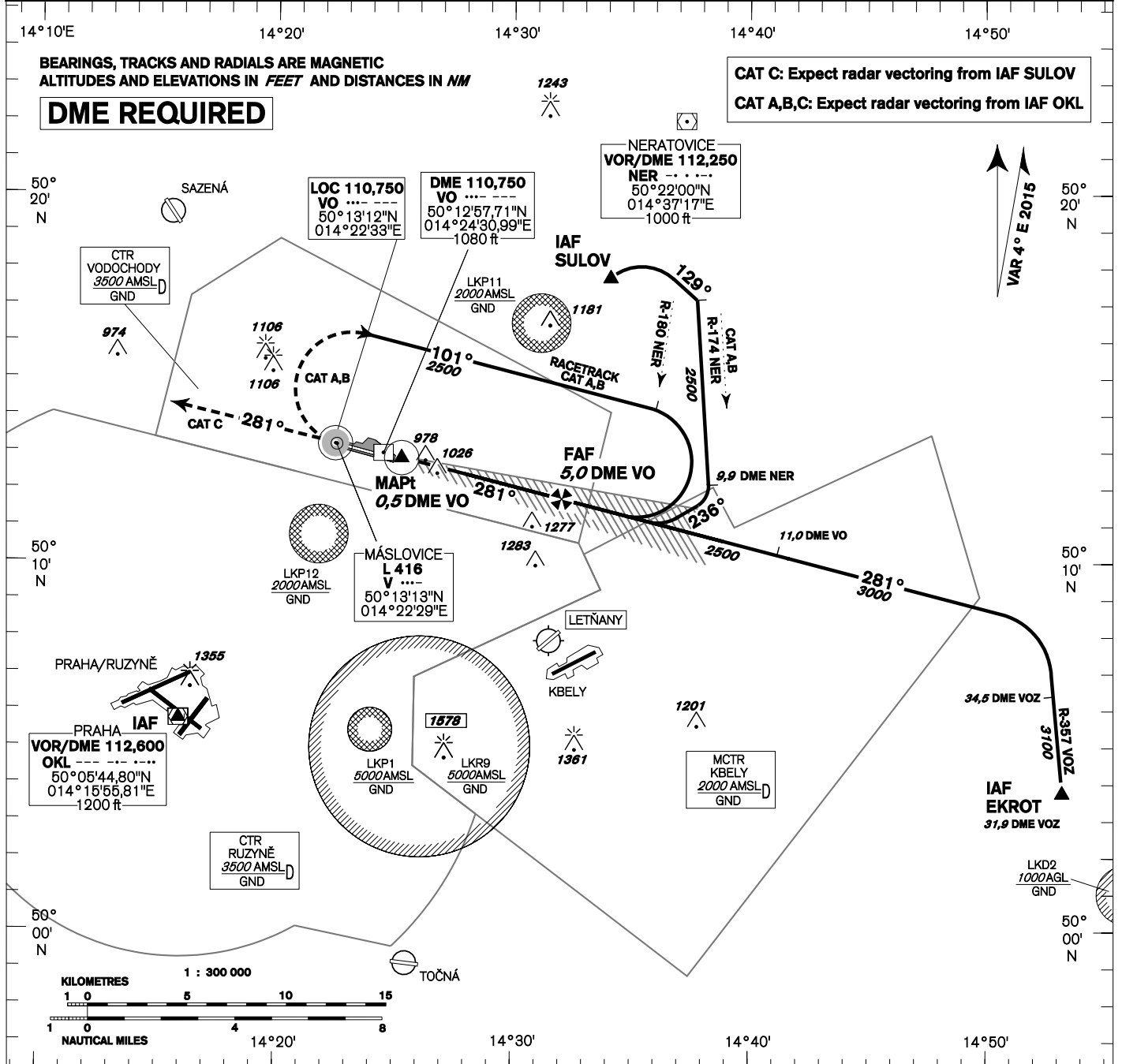


## INSTRUMENT APPROACH CHART - ICAO

**AERODROME ELEV 919**  
**THR RWY 28 ELEV 915**  
**OCH RELATED TO THR RWY 28**

**VODOCHODY  
RADAR** 127,480  
**TOWER** 133,080  
121,500

**PRAHA/VODOCHODY  
ILS**  
**RWY 28**  
**(ACFT CAT A,B,C)**



**MISSED APPROACH:**  
CAT A,B: Climb on track 281°, at L V turn right and continue on racetrack in climbing to 2500ft AMSL.  
CAT C: Climb on track 281° to 2500ft AMSL, radar vectoring will be provided  
CAT A,B,C: In case of RCF climb on track 281° to 2500ft AMSL, at 5,0DME VO turn right to L V

**THR 501249,66N 0142444,89E**  
**ELEV 915**

**NM FM THR28**

**TRANSITION ALTITUDE 5000ft**

**ILS RDH 55,7**

**1280**  
**2180**  
**2500**

**G.P. 3,0°**  
**5,24%**

**0,5 DME VO MAPt LOC**  
**4,0 DME VO**  
**5,0 DME VO FAF**

**ILS RDH 55,7**

OCA/OCH	A	B	C
cat I	ft 1064/149	1076/161	1084/169
LOC	ft 1280/360		
Circling (north of AD only)	ft 1330/410	1330/410	1500/580

DME VO NM	5	4	3	2	1
DIST THR NM	4,8	3,8	2,8	1,8	0,8
ALTITUDES ft	2500	2180	1860	1540	1230

kt	80	100	120	140	160	180
FAF - MAPt 4,5 NM min:sec	3:23	2:42	2:15	1:56	1:41	1:30
Rate of descent 5,24% ft/min	420	530	640	740	850	960

Timing is not authorized for defining the MAPt.