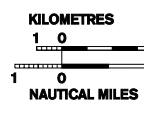
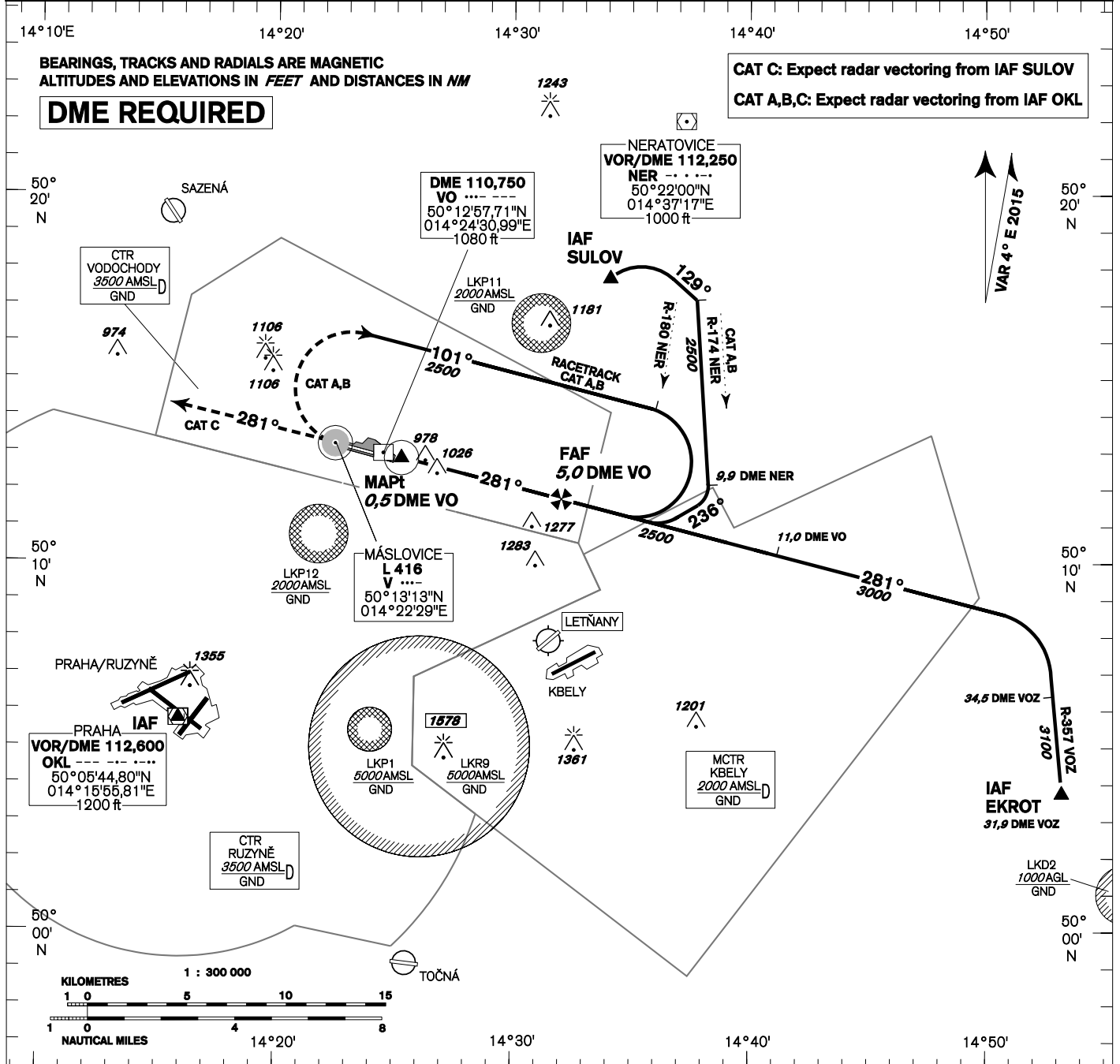
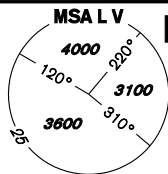


INSTRUMENT APPROACH CHART - ICAO	AERODROME ELEV 919 THR RWY 28 ELEV 915 OCH RELATED TO THR RWY 28	VODOCHODY RADAR 127,480 TOWER 133,080 121,500	PRAHA/VODOCHODY NDB RWY 28 (ACFT CAT A,B,C)
---	--	---	--



MISSED APPROACH:
 CAT A,B: Climb on track 281°, at L V turn right and continue on racetrack in climbing to 2500' AMSL.
 CAT C: Climb on track 281° to 2500' AMSL, radar vectoring will be provided.
 CAT A,B,C: In case of RCF climb on track 281° to 2500' AMSL, at 5,0 DME VO turn right to L V

TRANSITION ALTITUDE
5000ft

THR 501249,66N 0142444,89E
ELEV 915

NM FM THR28

OCA/OCH		A	B	C
Straight in approach	ft		1280/360	
Circling (north of AD only)	ft	1330/410	1330/410	1500/580

DME VO NM	5	4	3	2	1
DIST THR NM	4,8	3,8	2,8	1,8	0,8
ALTITUDES ft	2500	2180	1860	1540	1230

kt	80	100	120	140	160	180
FAF - MAPt 4,5 NM min:sec	3:23	2:42	2:15	1:56	1:41	1:30
Rate of descent 5,24% ft/min	420	530	640	740	850	960

Timing is not authorized for defining the MAPt.