

LKBA Břeclav

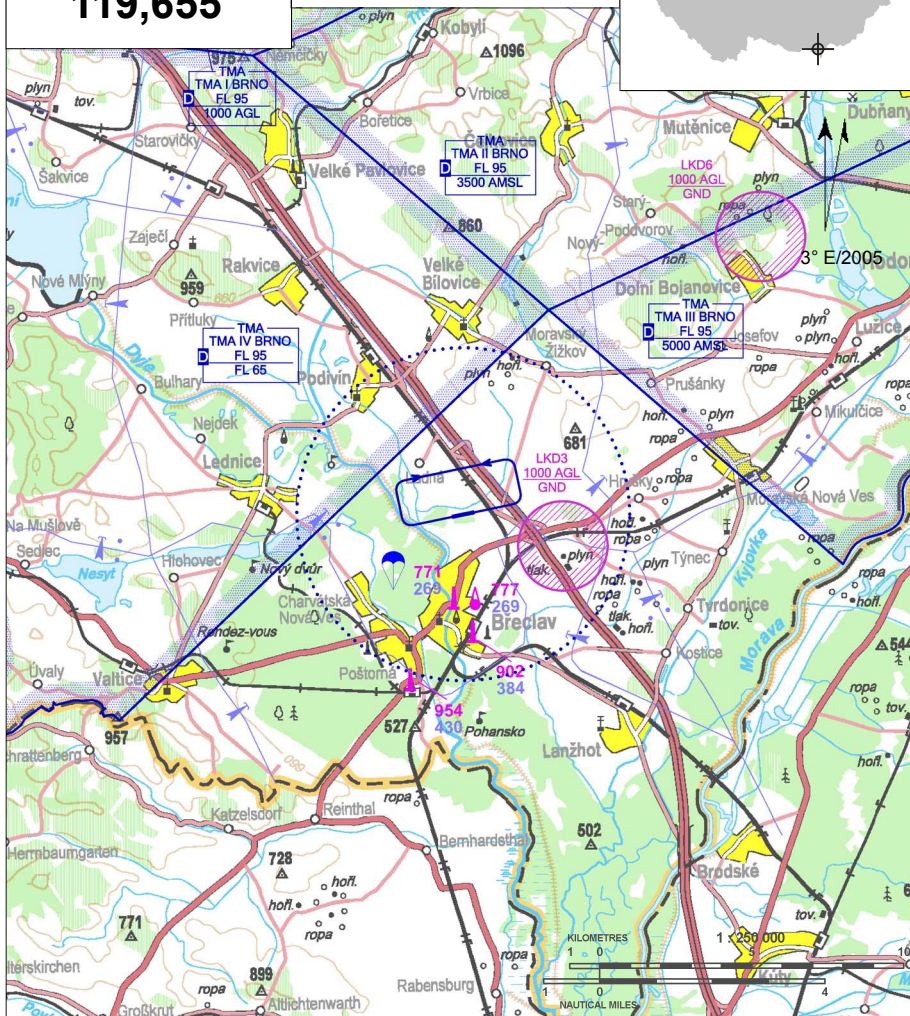
S Public domestic aerodrome

✈ VFR day, parachute jumping operation, glider launch



Břeclav RADIO
119,655

ARP: 48° 47' 27" N, 16° 53' 33" E
3,5 km N Břeclav
ELEV: 525 ft / 160 m
Circuit: 1500 ft / 457 m AMSL



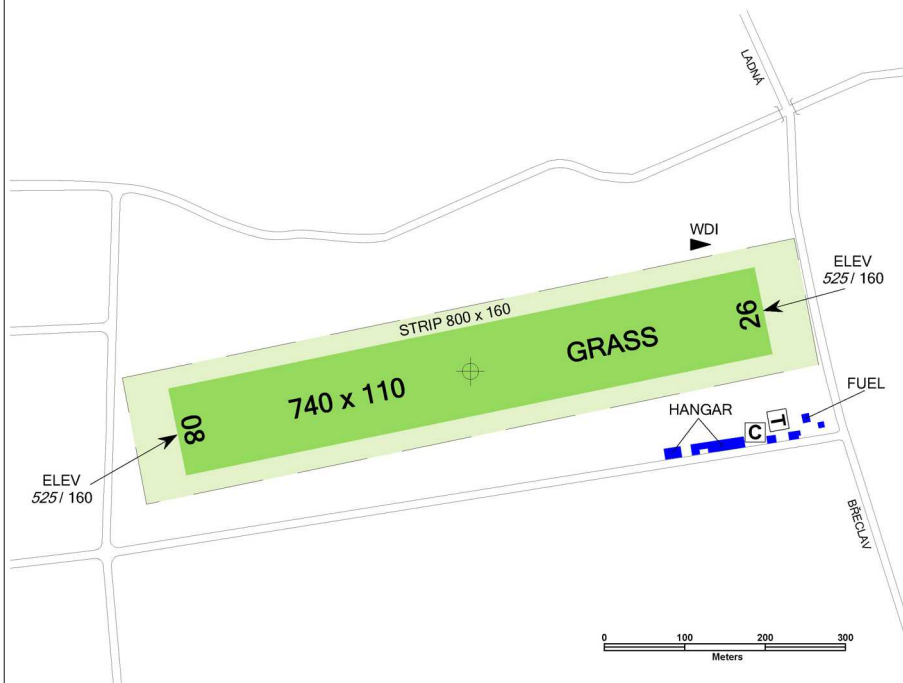
Take-offs from RWY 08 and landings on RWY 26 cross the road with traffic controlled by traffic lights which are controlled by officer of Providing information to known traffic. Nevertheless, respecting of the traffic lights is not guaranteed by all road users. Therefore, the road in the vicinity of THR RWY 26 shall be overflowed due to safety at least 15 m from the lowest part of the aircraft or towed object.

LKBA Břeclav



Břeclav RADIO
119,655

RWY	Magnetic direction	RWY dimensions	Strength	TORA	TODA	ASDA	LDA
08	080°	740 x 110	5700 kg / 0.7 MPa	740	770	740	740
26	260°	740 x 110	5700 kg / 0.7 MPa	740	770	740	740



15 APR - 15 OCT
SAT, SUN, HOL 0700 - 1400
otherwise O/R 24 HR in advance



aviation petrol AVGAS 100, NATURAL 95



TOTAL AERO D100, AEROSHELL SPORT PLUS 4



Limited, O/R



In an emergency



Břeclav, 18 persons at the aerodrome by prior arrangement



Limited on AD, TESCO 1,5 km



taxi



Aeroklub Břeclav, z.s.

Letiště 3486/2, 690 03 Břeclav,

☎ +420 534 001 823, info@aeroklubbreclav.cz,

www.aeroklubbreclav.cz

Václav Hruza ☎ +420 724 623 450

Customs and immigration clearance: NIL



Air Navigation Services
of the Czech Republic