

# LKCB Cheb

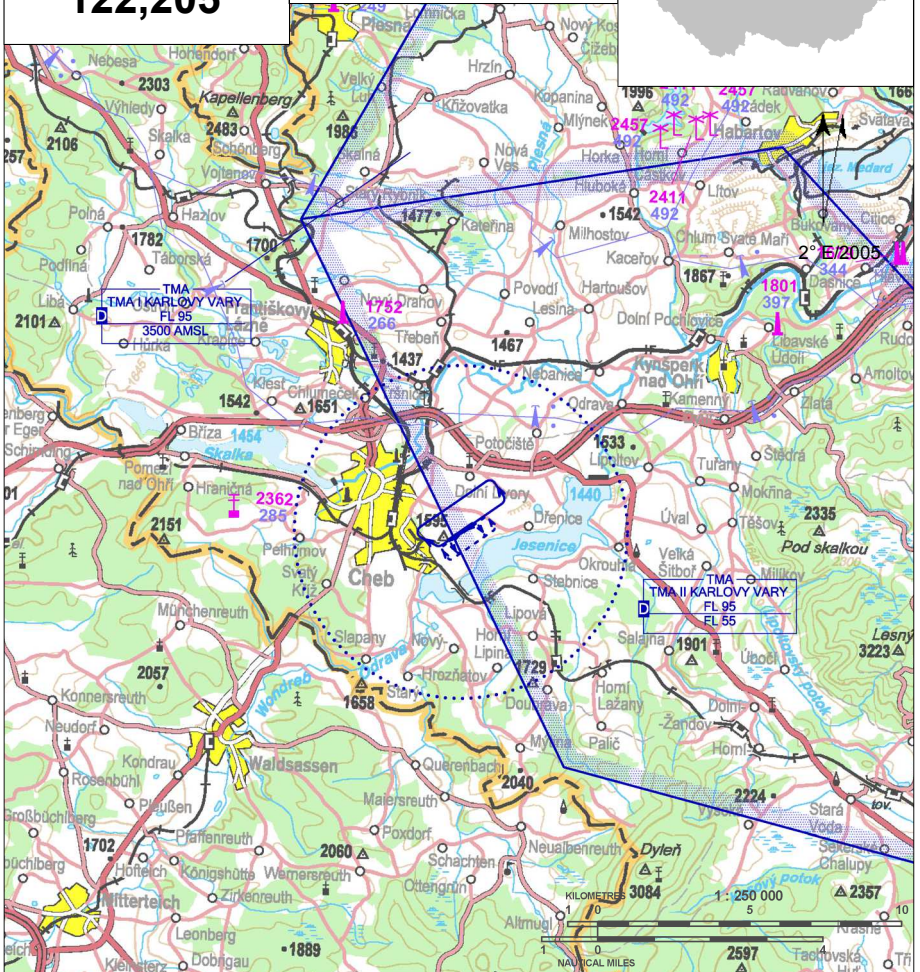
§ Public domestic aerodrome

✈ VFR day



**Cheb RADIO**  
**122,205**

**ARP: 50° 03' 59" N, 12° 24' 46" E**  
**3 km GEO 135° Cheb**  
**ELEV: 1585 ft / 483 m**  
**Circuit: 2600 ft / 867 m AMSL**



Due to noise abatement it is prohibited:

- to overfly village Podhrad,
- to overfly Jesenice dam under altitude 2600 ft / 867 m AMSL.

Approach to RWY 05 carry out outside housing part of village Podhrad.

After take-off from RWY 23 in safe height turn 60° right to heading 290° to avoid village Podhrad.

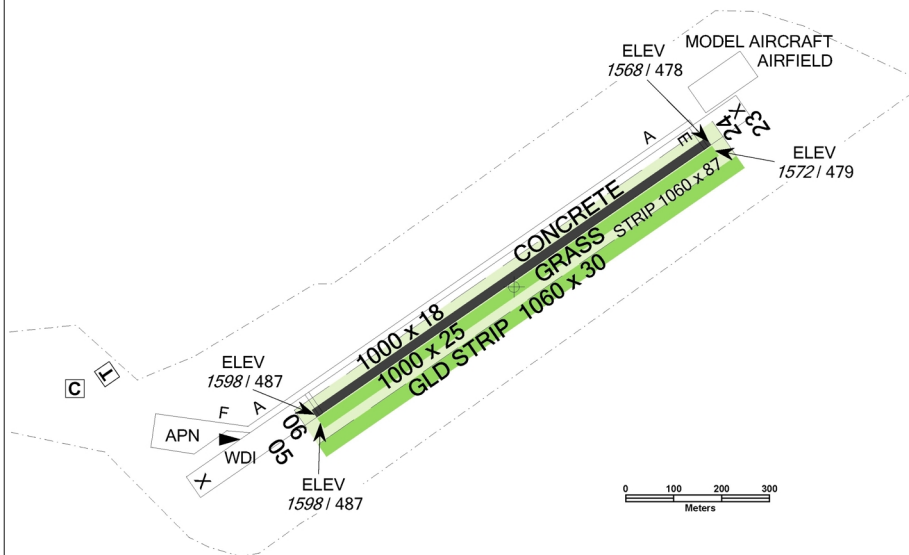


# LKCB Cheb



**Cheb RADIO**  
**122,205**

RWY	Magnetic direction	RWY dimensions	Strength	TORA	TODA	ASDA	LDA
05	053°	1000 x 25	5700 kg / 0.7 MPa	1000	1030	1000	1000
23	233°	1000 x 25	5700 kg / 0.7 MPa	1000	1030	1000	1000
06	053°	1000 x 18	5700 kg / 0.7 MPa	1000	1030	1000	1000
24	233°	1000 x 18	5700 kg / 0.7 MPa	1000	1030	1000	1000



## Aeroklub Karlovy Vary, o.s.

K Letišti 197, 360 01 Karlovy Vary,  
☎ +420 775 048 708, ☎ +420 353 331 107,  
aeroklub.kv@volny.cz

Providing information to known traffic

☎ +420 775 048 708, ☎ +420 353 331 107

Tomáš Rota - head of air traffic ☎ +420 603 776 762

Jan Appeltauer ☎ +420 734 174 326, EN

Luděk Matějčiček ☎ +420 776 078 589, GER

Customs and immigration clearance: NIL

Taxi along TWY F, B, E (concrete) and TWY A (grass).

Parallel operation (simultaneous take-off or landing) on RWY 06/24, RWY 05/23 and glider strip is not allowed.



15 APR - 15 OCT  
SAT, SUN, HOL 0700-1400  
and further during aeroclub operation  
otherwise O/R 24 HR in advance



AVGAS 100LL, Natural 95, limited



TOTAL AERO 100D



O/R, limited



NIL



in town Cheb



in town Cheb, only snack-bar at aerodrome



bus and train, station Cheb, taxi

