

# LKZL Zlín

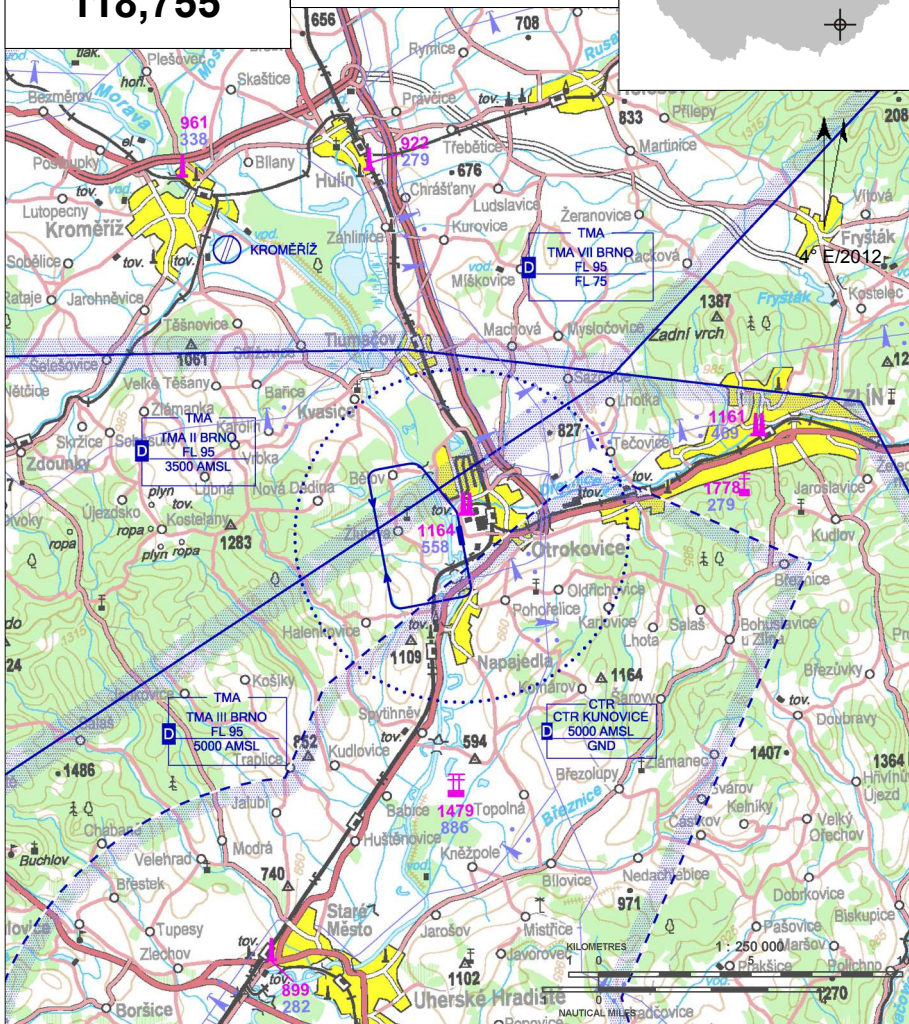
**S** Private domestic aerodrome

**X** VFR day



**Zlín RADIO**  
**118,755**

**ARP:** 49° 11' 54" N, 17° 31' 04" E  
11 km WSW Zlín  
**ELEV:** 604 ft / 184 m  
**Circuit:** 2000 ft / 610 m AMSL



The following flights are permitted at the AD: transport flights of approved operators, test and check flights, training flights (basic training is not permitted).

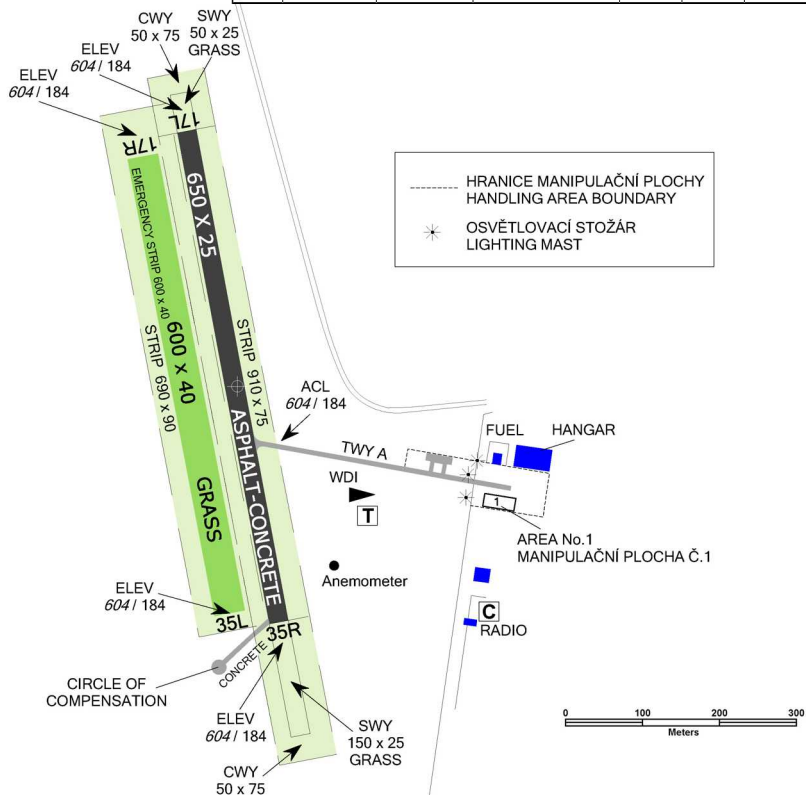
Obstacles in approach and take-off areas from RWY 17 and RWY 35 present worse conditions for solving of situation in case of engine failure.

# LKZL Zlín



Zlín RADIO  
**118,755**

| RWY | Magnetic direction | RWY dimensions | Strength          | TORA | TODA | ASDA | LDA |
|-----|--------------------|----------------|-------------------|------|------|------|-----|
| 17L | 167°               | 650 x 25       | PCN 19 F/C/Y/T    | 650  | 700  | 800  | 650 |
| 35R | 347°               | 650 x 25       | PCN 19 F/C/Y/T    | 650  | 700  | 700  | 650 |
| 17R | 167°               | 600 x 40       | 5700 kg / 0.4 MPa | 600  | 600  | 600  | 600 |
| 35L | 347°               | 600 x 40       | 5700 kg / 0.4 MPa | 600  | 600  | 600  | 600 |



## 2007 s.r.o.

Ječná 550/1, Nové Město, 120 00 Praha 2,  
☎ +420 725 266 730, 📠 +420 226 013 830,  
info@zlinaircraft.eu

Unit Providing information to known traffic Zlín

☎ +420 725 266 708

🕒 O/R

📱 NIL

📺 NIL

🏠 NIL

🔧 NIL

🏠 Otrokovice, Zlín

✂ NIL

🚗 taxi, bus, train

Customs and immigration clearance: NIL

AD LKZL is a private aerodrome. A permission from AD operator in written form shall be obtained for each arrival and departure including aerodrome flights.

Written applications for permission to be sent (see article 5) at least 24 HR in advance on working days.

