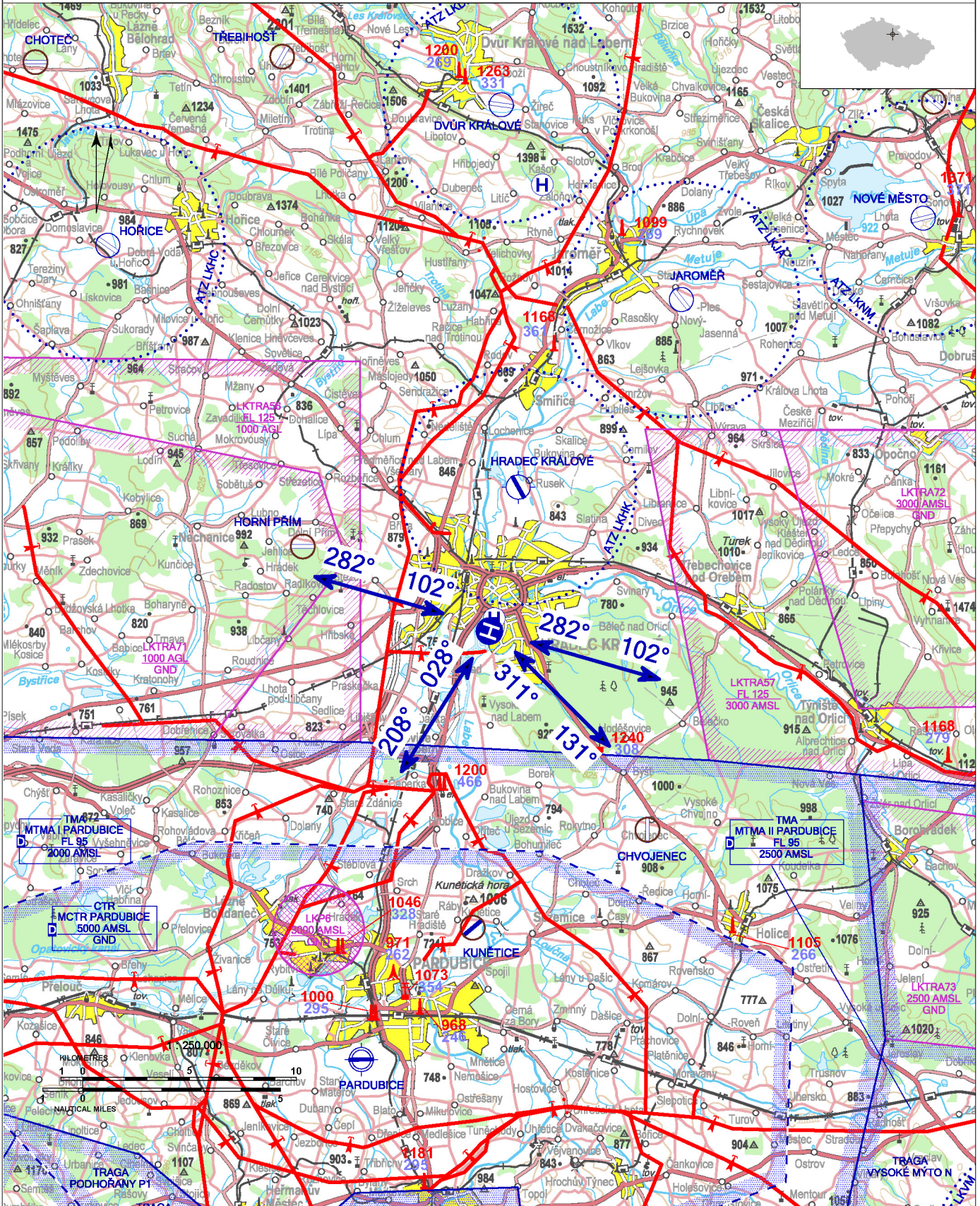


# LKHH - Hradec Králové - Základna HEMS

Private domestic heliport HEMS

VFR day/night

50 11 35,93 N, 015 49 31,85 E POS: 1,8 km SSW Hradec Králové city center ELEV: 751 ft / 229 m



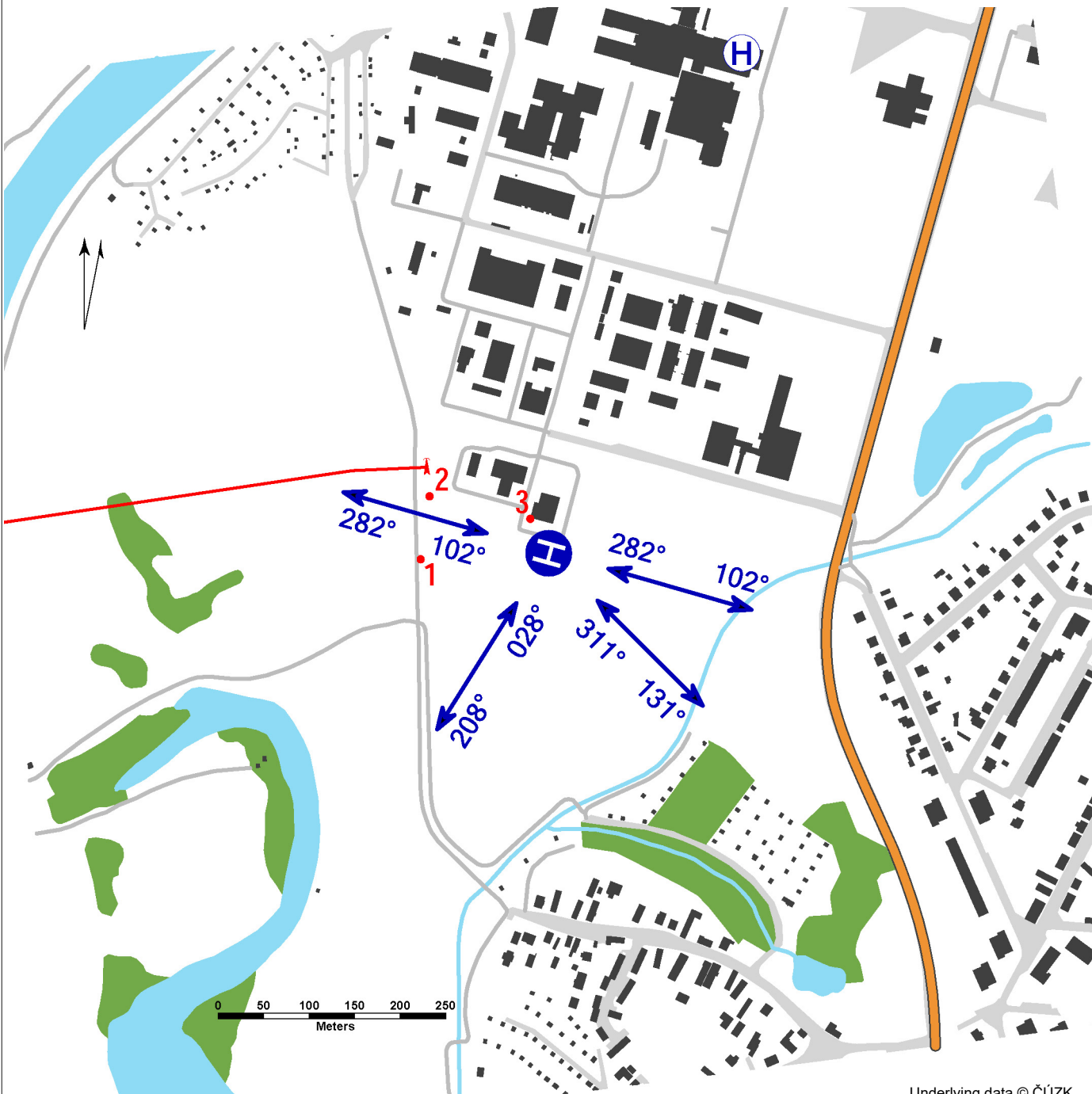
! Only HEMS flights allowed.  
 Gradient of descent 1000 ft / 1 NM.  
 Heliport lighting system control is provided locally from the control room (telephone +420 495 755 446) or by remote radio control from the helicopter deck (by keying FREQ 135,460):  
 3x within 5 seconds - intensity 10%  
 5x within 5 seconds - intensity 30%  
 7x within 5 seconds - intensity 100%  
 All lights turn off automatically 15 minutes after the radio remote control command.

## LKHH - Hradec Králové - Základna HEMS

surface-level HEMS heliport  
 value „D“ - 17 m (limitedly 19 m)  
 FATO – square 26 x 26 m, concrete, strength 6400  
 kg / 0,4 MPa  
 SA – square 44 x 44 m, grass  
 TLOF – square 26 x 26 m, concrete, strength 6400  
 kg / 0,4 MPa

WDI (40 m NNW)  
 FATO: designation markings  
 TLOF: perimeter markings/lighting TLOF, markings  
 TDPM  
 A-PAPI: 9,3°  
 ALS: shortened, length 25 m  
 heliport beacon

|   |      |                              |                |                |
|---|------|------------------------------|----------------|----------------|
| 1 | tree | 50 11 35,70 N 015 49 24,72 E | 843 ft / 257 m | NIL            |
| 2 | tree | 50 11 37,94 N 015 49 25,25 E | 817 ft / 249 m | NIL            |
| 3 | WDI  | 50 11 37,10 N 015 49 30,82 E | 787 ft / 240 m | night markings |



Underlying data © ČÚZK



**Zdravotnická záchraná služba  
 Královéhradeckého kraje**  
 Hradecká 1690/2a, 500 12 Hradec Králové,  
 ☎ +420 495 755 721, info@zzskhk.cz

Ing. Vlastimil Nakládal (responsible  
 person of operator) ☎ +420 724 193 939,  
 nakladalv@zzskhk.cz  
 dispatching (lighting system control)  
 ☎ +420 495 755 446

|           | Approach:                 | Take-offs:                |
|-----------|---------------------------|---------------------------|
| VFR day   | 028°, 102°, 311°,<br>282° | 102°, 131°, 208°,<br>282° |
| VFR night | 282°                      | 102°, 208°, 282°          |



HX



AVGAS 100 (when pre-agreed)



Aero Shell (when pre-agreed)



NIL

Rescue and fire service: Cat H1